

Public Closure

Starting 7/18/19

Closures in effect 7 days a week, 24 hours a day



Forest closures are actively enforced by Benton County Sheriff's Office. Harvest operations are extremely dangerous—please respect posted forest closures for your safety and the safety of the harvest crews.

582 CTL Harvest Information

Approximate Closure Duration: July 18, 2019—August 23, 2019

Closed Roads: 582

Closed Trails: Dave's Trail, small portion of Powder House Trail

Haul Routes: 582 Road

Size: 28.3 acres

Prescription: Thinning

Harvest Method: Cut-to-length machinery

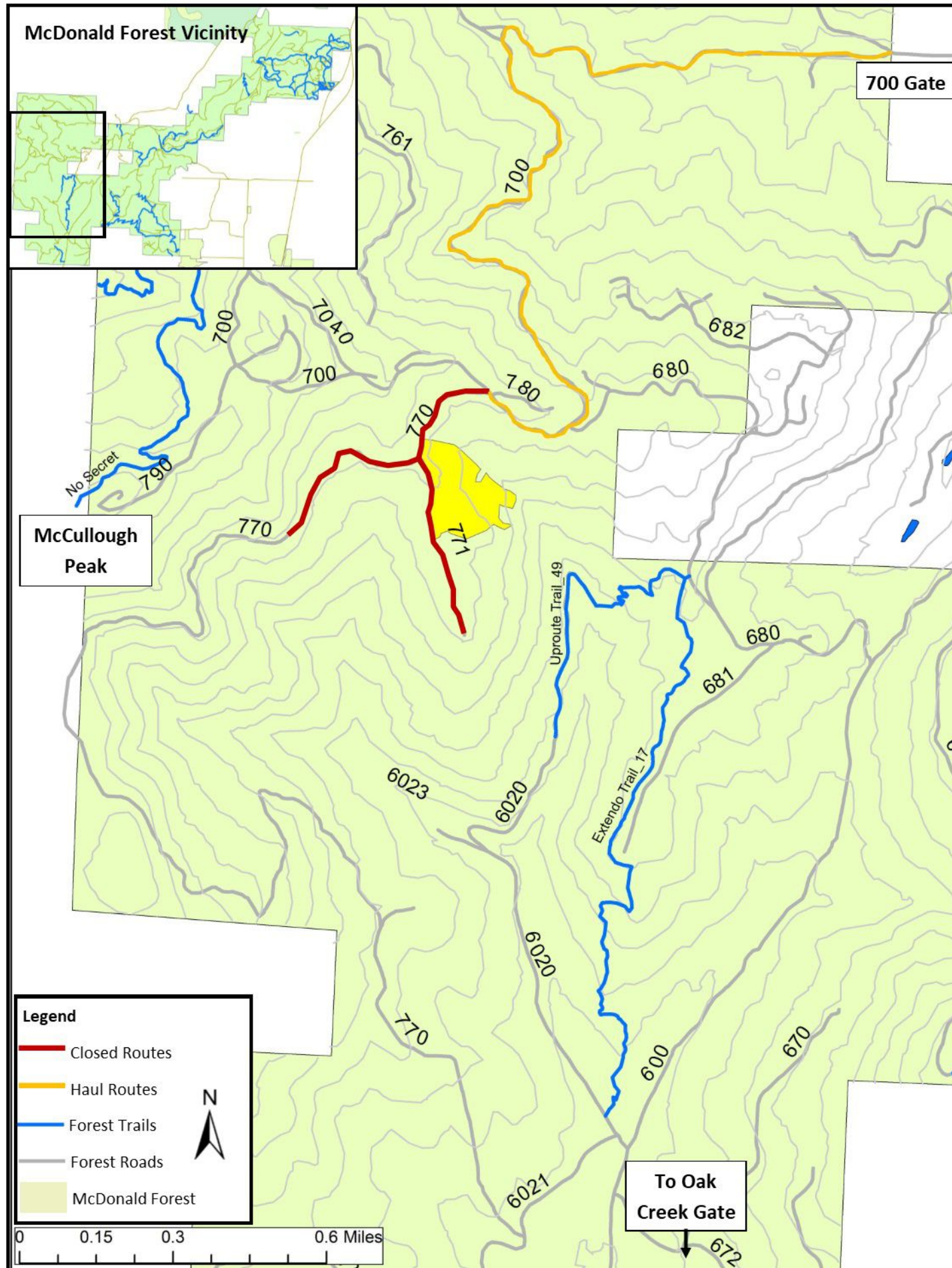
Reason for Harvest: Forest health and revenue generation to support Research Forest operations and student learning in the College of Forestry.

Know about closures before you go!

Learn more about e-mail, Facebook and web updates:
<http://cf.forestry.oregonstate.edu/more-information>

Contact us: (541) 737-4452





Public Closure

Starting 6/27/2019

Closures in effect 7 days a week, 24 hours a day



Forest closures are actively enforced by Benton County Sheriff's Office. Harvest operations are extremely dangerous—please respect posted forest closures for your safety and the safety of the harvest crews.

Bermuda Triangle Harvest Information

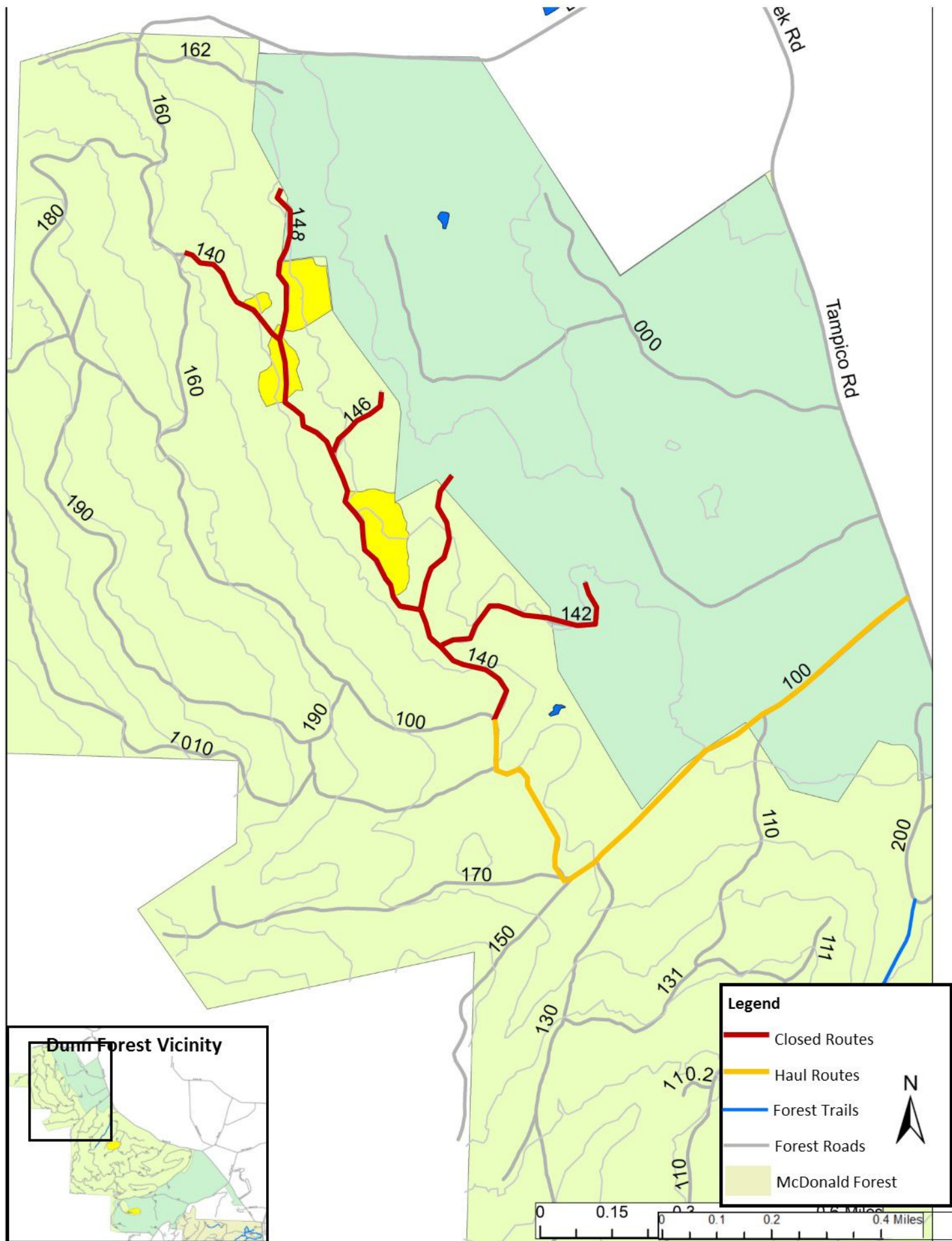
- Approximate Closure Duration:** 6/27/2019—7/27/2019
- Closed Roads:** 771, portion of 770
- Closed Trails:** All unauthorized trails leading into the closure area, including (but not limited to) Rockslide.
- Haul Routes:** 770 – 700 – 700 Gate
- Size:** 14.2 acres
- Prescription:** Clear-cut with structure retention
- Harvest Method:** Ground-based using cut-to-length machinery
- Reason for Harvest:** Removal of damaged and dying trees resulting from the 2014 ice storm. Revenue generation to support OSU RF operations and student learning in the College of Forestry.
- Research Applications:** Seeds collected from B.C. all the way down into Southern Oregon were planted in this stand. Few have grown well, and nearly all these trees were damaged by ice.

Know about closures before you go!

Learn more about e-mail, Facebook and web updates:
<http://cf.forestry.oregonstate.edu/more-information>

Contact us: (541) 737-4452





Public Closure

Starting 7/18/19

Closures in effect 7 days a week, 24 hours a day



Forest closures are actively enforced by Benton County Sheriff's Office. Harvest operations are extremely dangerous—please respect posted forest closures for your safety and the safety of the harvest crews.

Blacktail Thin Harvest Information

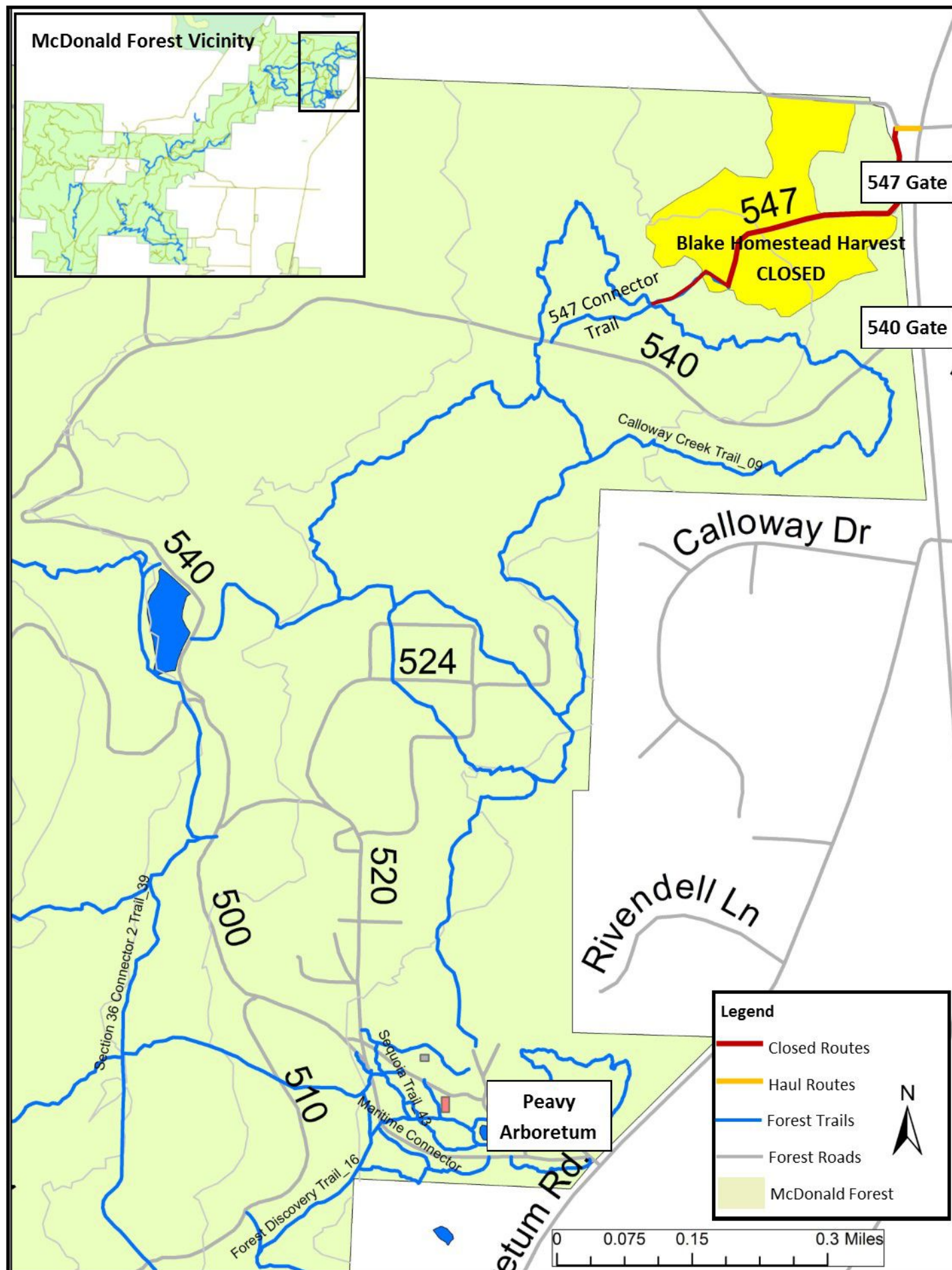
- Approximate Closure Duration:** July 18, 2019—August 30, 2019
- Closed Roads:** 140, parking restrictions at 100 Gate
- Closed Trails:** none
- Haul Routes:** 140, 100, 100 Gate
- Size:** 25.3 acres
- Prescription:** Thinning
- Harvest Method:** Ground-based cut-to-length machinery
- Reason for Harvest:** Forest health and revenue generation to support Research Forest operations and student learning in the College of Forestry.

Know about closures before you go!

Learn more about e-mail, Facebook and web updates:
<http://cf.forestry.oregonstate.edu/more-information>

Contact us: (541) 737-4452





Public Closure

Starting 6/17/2019

Closures in effect 7 days a week, 24 hours a day



Forest closures are actively enforced by Benton County Sheriff's Office. Harvest operations are extremely dangerous—please respect posted forest closures for your safety and the safety of the harvest crews.

Blake Homestead Harvest Information

Approximate Closure Duration: 6/17/2019-8/17/2019

Closed Roads: 547

Closed Trails: 547 Connector Trail

Haul Routes: 547

Size: 21.3 **Prescription:** Clear cut with structure retention

Harvest Method: Ground based machinery

Reason for Harvest: Revenue generation to support Research Forest operations and student learning in the College of Forestry.

Know about closures before you go!

Learn more about e-mail, Facebook and web updates:
<http://cf.forestry.oregonstate.edu/more-information>

Contact us: (541) 737-4452



Public Closure Starting 8/22/19

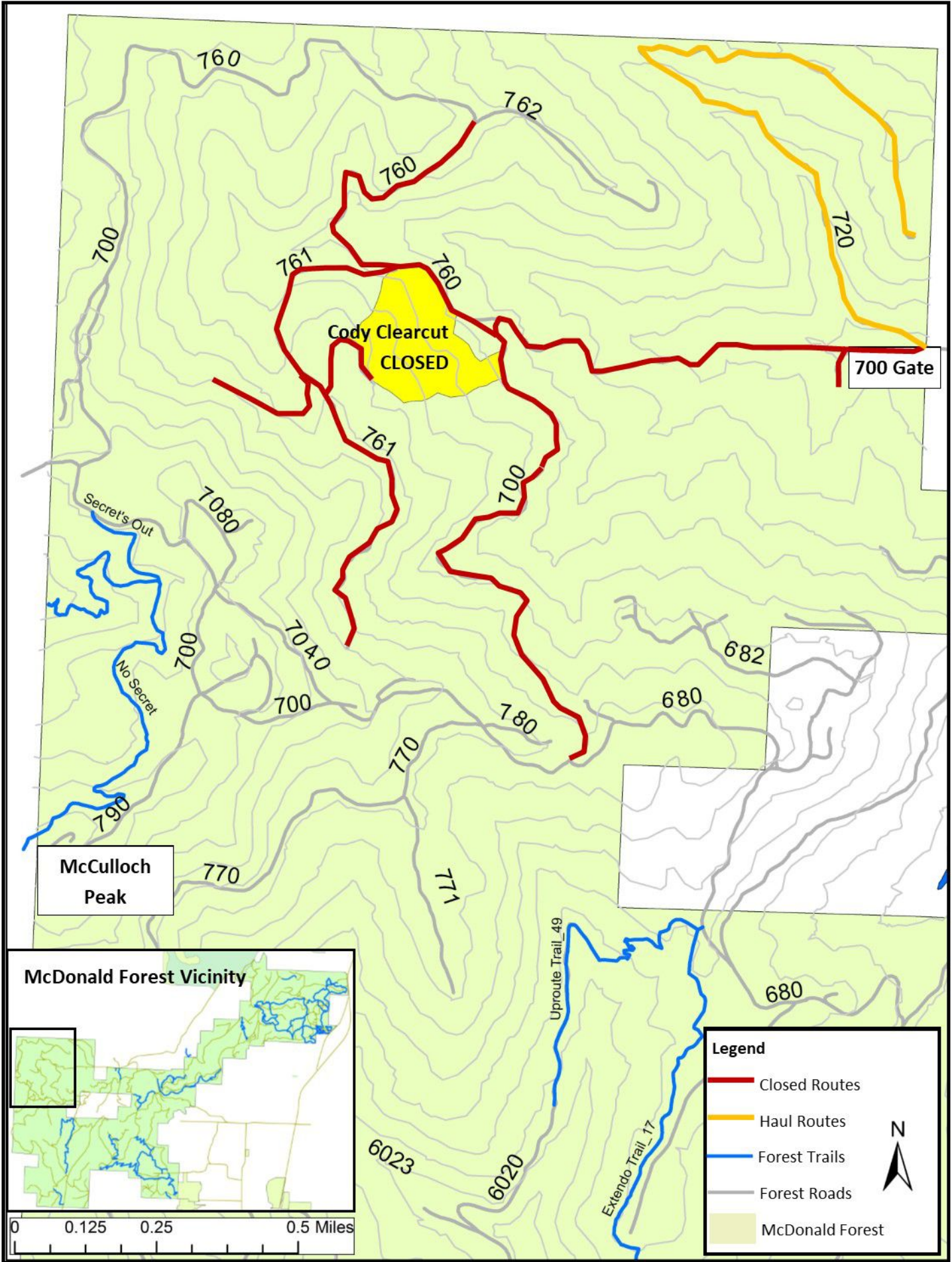
Closures in effect 7 days a week, 24 hours a day



Forest closures are actively enforced by Benton County Sheriff's Office. Harvest operations are extremely dangerous—please respect posted forest closures for your safety and the safety of the harvest crews.


Cody Clear Harvest Information

- Approximate Closure Duration:** 1.5 months (8/22/19 — 10/11/19)
- Closed Roads:** 700, portion of 760, 761
- Closed Trails:** All unauthorized trails leading into closed roads and harvest area. None of these trails will be impacted by the harvest.
- Haul Routes:** 700 to Sulphur Springs, 720
- Size:** 24.5 acres
- Prescription:** Clear-cut with structure retention
- Harvest Method:** Cable yarding / ground-based machinery
- Reason for Harvest:** The stand sustained heavy ice damage in 2015 and is in an under-producing timber condition. Harvest revenue will support Research Forest operations and student learning in the College of Forestry.



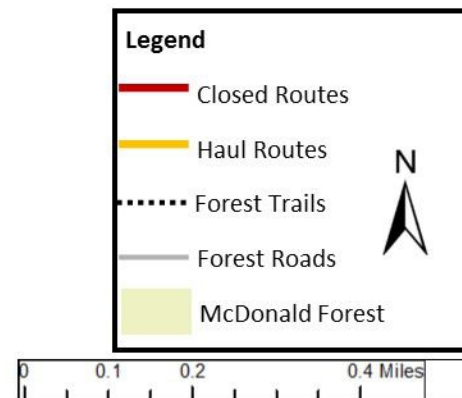
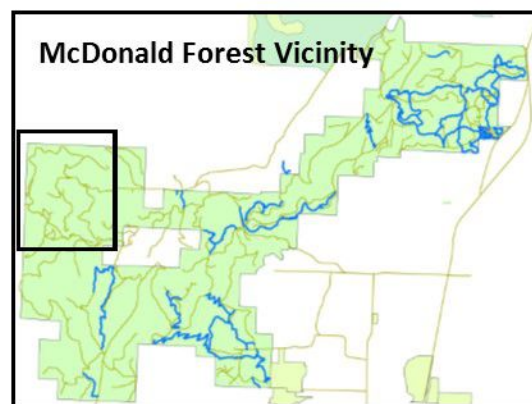
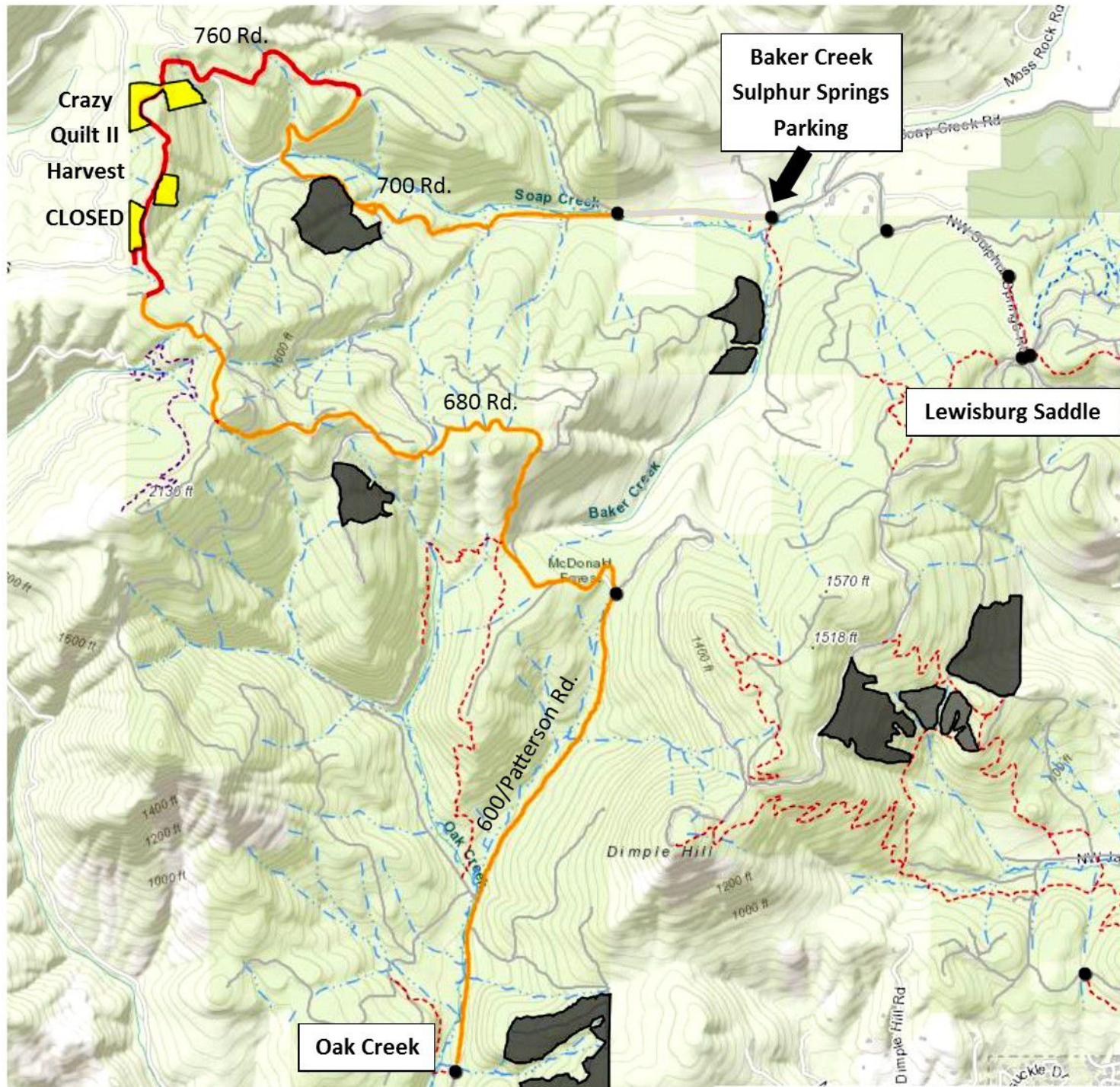
Know about closures before you go!

Learn more about e-mail, Facebook and web updates:
<http://cf.forestry.oregonstate.edu/more-information>



Contact us: (541) 737-4452





Public Closure Starting 4/3/2019

Closures in effect 7 days a week, 24 hours a day



Forest closures are actively enforced by Benton County Sheriff's Office. Harvest operations are extremely dangerous—please respect posted forest closures for your safety and the safety of the harvest crews.

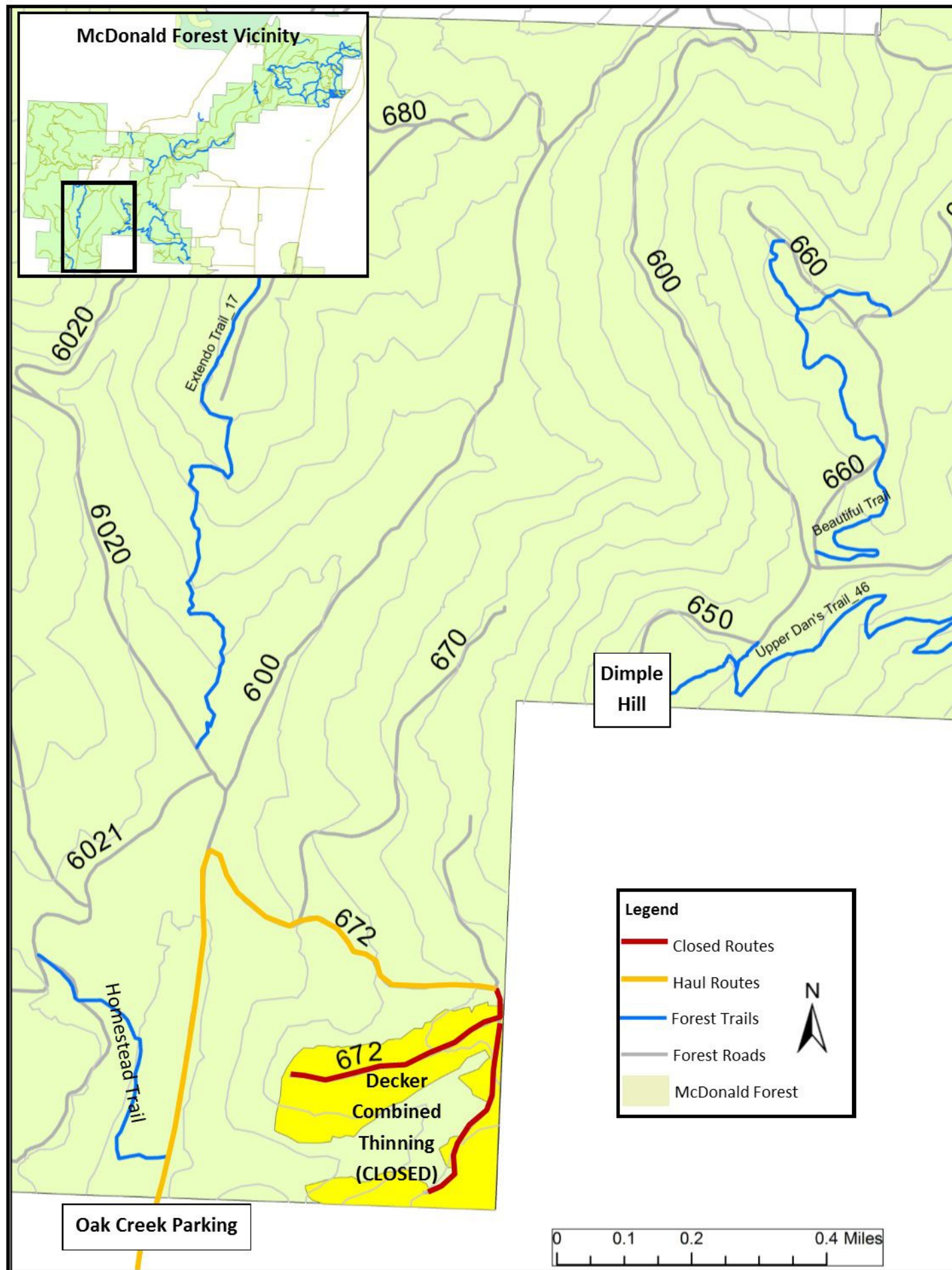
Crazy Quilt Part II Harvest Information

- Approximate Closure Duration:** 4/3/2019—6/15/2019
- Closed Roads:** 760, Sections of 700
- Closed Trails:** All unauthorized trails leading into harvest area (Including but not limited to 'Rut Access,' 'Iris Meadow,' 'Stick in the Eye' and 'Rocky Road' unauthorized trails)
- Haul Routes:** 760 - 700 - Sulphur Springs ; 700 - 680 - 600/Patterson Road - Oak Creek
- Size:** 12.6 acres **Prescription:** Clear-cut
- Harvest Method:** Cable yarding
- Reason for Harvest:** Revenue generation to support Research Forests operations and student learning in the College of Forestry

Know about closures before you go!

Learn more about e-mail, Facebook and web updates:
<http://cf.forestry.oregonstate.edu/more-information>

Contact us: (541) 737-4452



Public Closure

Starting 6/24/2019

Closures in effect 7 days a week, 24 hours a day



Forest closures are actively enforced by Benton County Sheriff's Office. Harvest operations are extremely dangerous—please respect posted forest closures for your safety and the safety of the harvest crews.

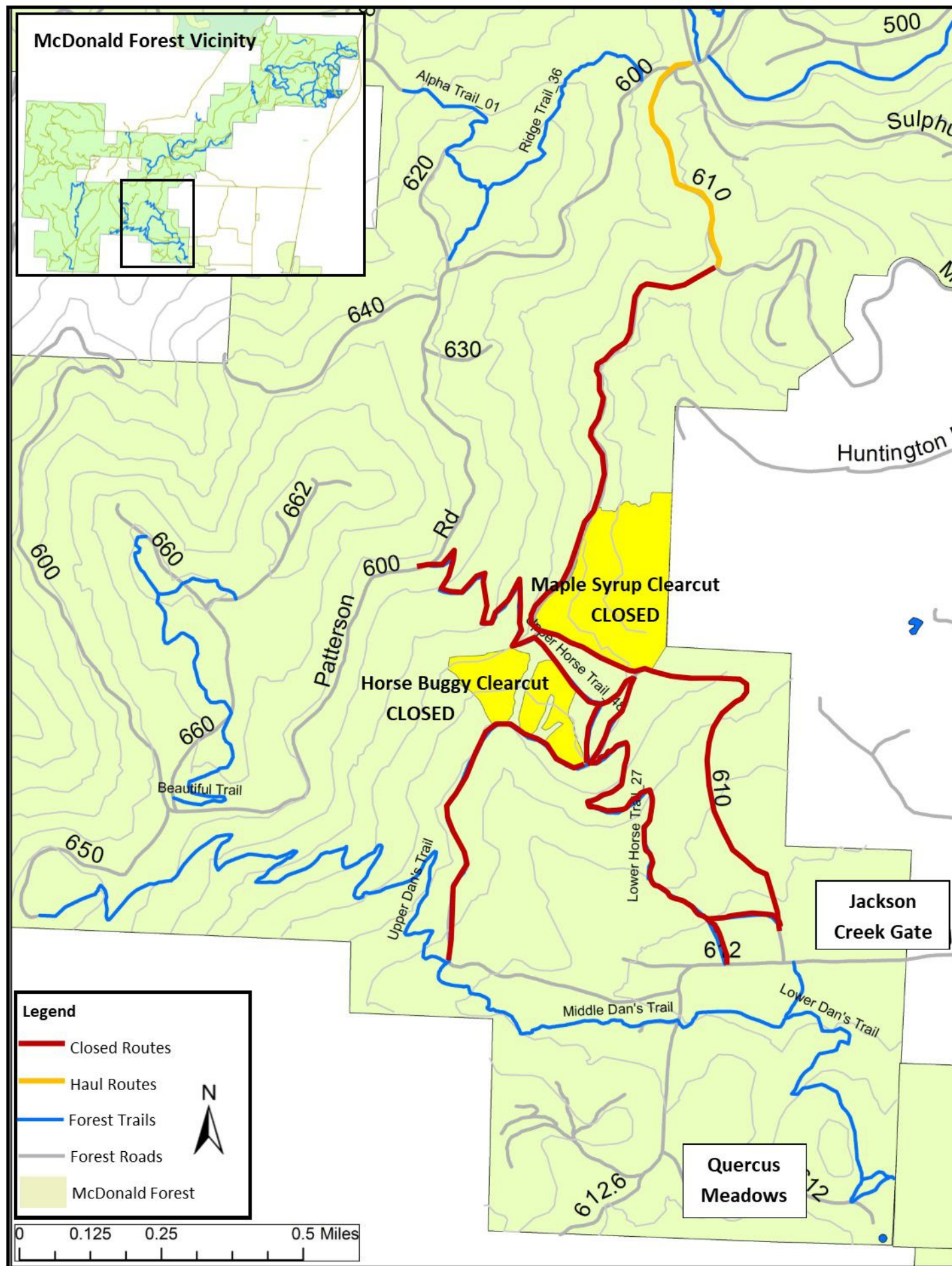
Decker Combined Harvest Information

- Approximate Closure Duration:** 6/24/2019-8/24/2019
- Closed Roads:** 672.3, portion of 672
- Closed Trails:** all unauthorized trails leading into the area, including 'Hocus Pocus'
- Haul Routes:** 672, 600, hauling out Oak Creek
- Size:** 35.5 acres
- Prescription:** Thinning
- Harvest Method:** Ground based, "cut-to-length" machinery
- Reason for Harvest:** Research support and forest health. Thinning is designed to remove suppressed, poor growing, and damaged conifers.

Know about closures before you go!

Learn more about e-mail, Facebook and web updates:
<http://cf.forestry.oregonstate.edu/more-information>

Contact us: (541) 737-4452



Public Closure Starting 8/2/19

Closures in effect 7 days a week, 24 hours a day



Forest closures are actively enforced by Benton County Sheriff's Office. Harvest operations are extremely dangerous—please respect posted forest closures for your safety and the safety of the harvest crews.

Horse Buggy and Maple Syrup Harvest Information

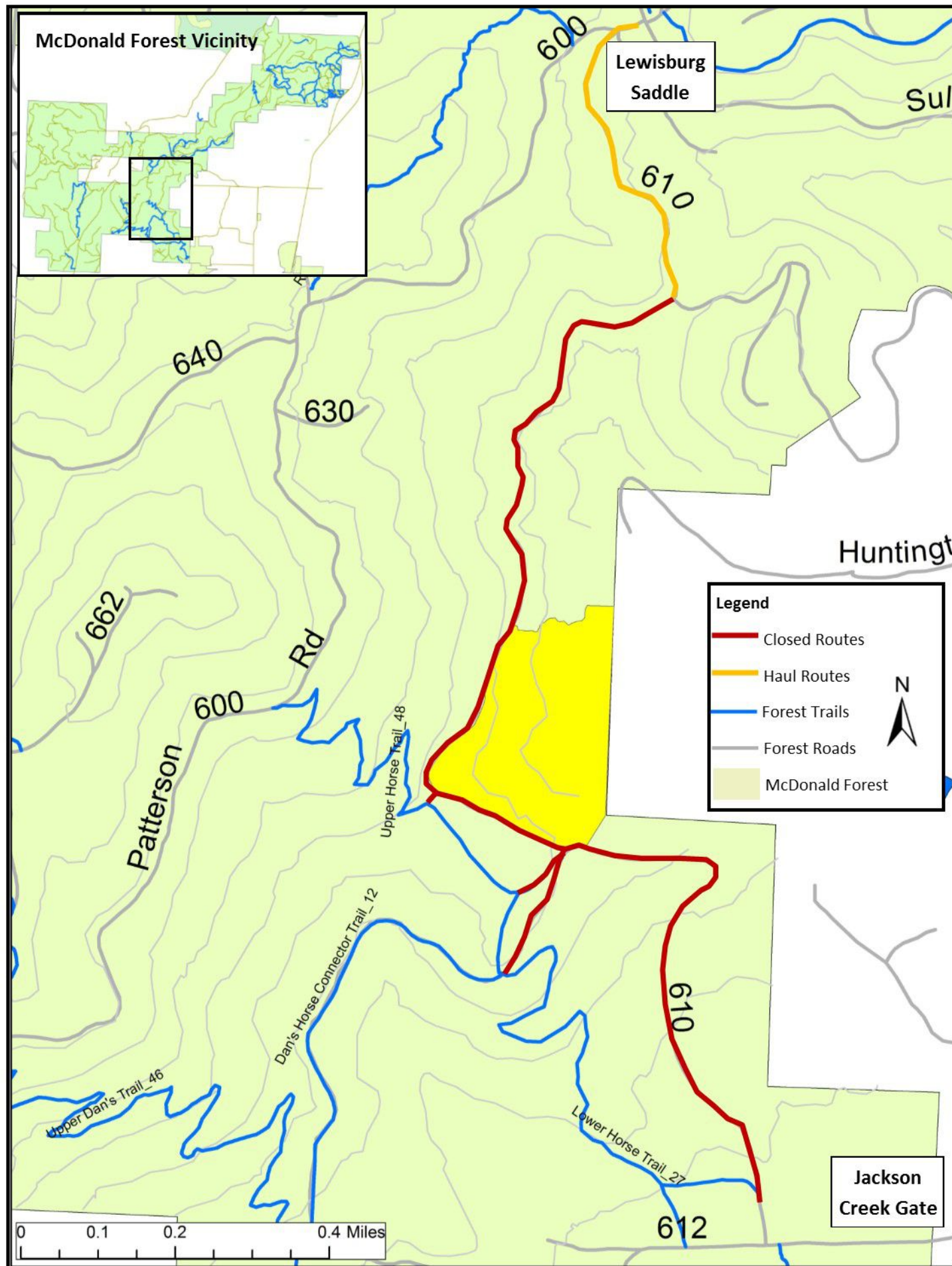
- Approximate Closure Duration:** 8/2/2019—10/2/2019
- Closed Roads:** Portions of 610, 612.4
- Closed Trails:** Upper Horse, Middle Horse, Lower Horse, Dan's Horse Connector Trails
- Haul Routes:** 610-600-Lewisburg Saddle
- Size:** 14.8 acres (Horse Buggy), 31.1 acres (Maple Syrup)
- Prescription:** Variable density regeneration harvest (Horse Buggy), Clear cut with structure retention (Maple Syrup)
- Harvest Method:** Ground based machinery (Horse Buggy), cable yarding (Maple Syrup)
- Reason for Harvest:** Replacing an under-producing stand, salvaging of dead and dying trees. Revenue generated will support Research Forests operations & student learning in the College of Forestry.

Know about closures before you go!

Learn more about e-mail, Facebook and web updates:
<http://cf.forestry.oregonstate.edu/more-information>

Contact us: (541) 737-4452



Public Closure

Starting 6/19/2019

Closures in effect 7 days a week, 24 hours a day



Forest closures are actively enforced by Benton County Sheriff's Office. Harvest operations are extremely dangerous—please respect posted forest closures for your safety and the safety of the harvest crews.

Maple Syrup Harvest Information

Approximate Closure Duration: 6/19/2019-9/1/2019

Closed Roads: Portion of 610

Closed Trails: Middle Horse Access

Haul Routes: 610 out of Lewisburg Saddle

Size: 31.1 acres

Prescription: Clear-cut

Harvest Method: Cable yarding

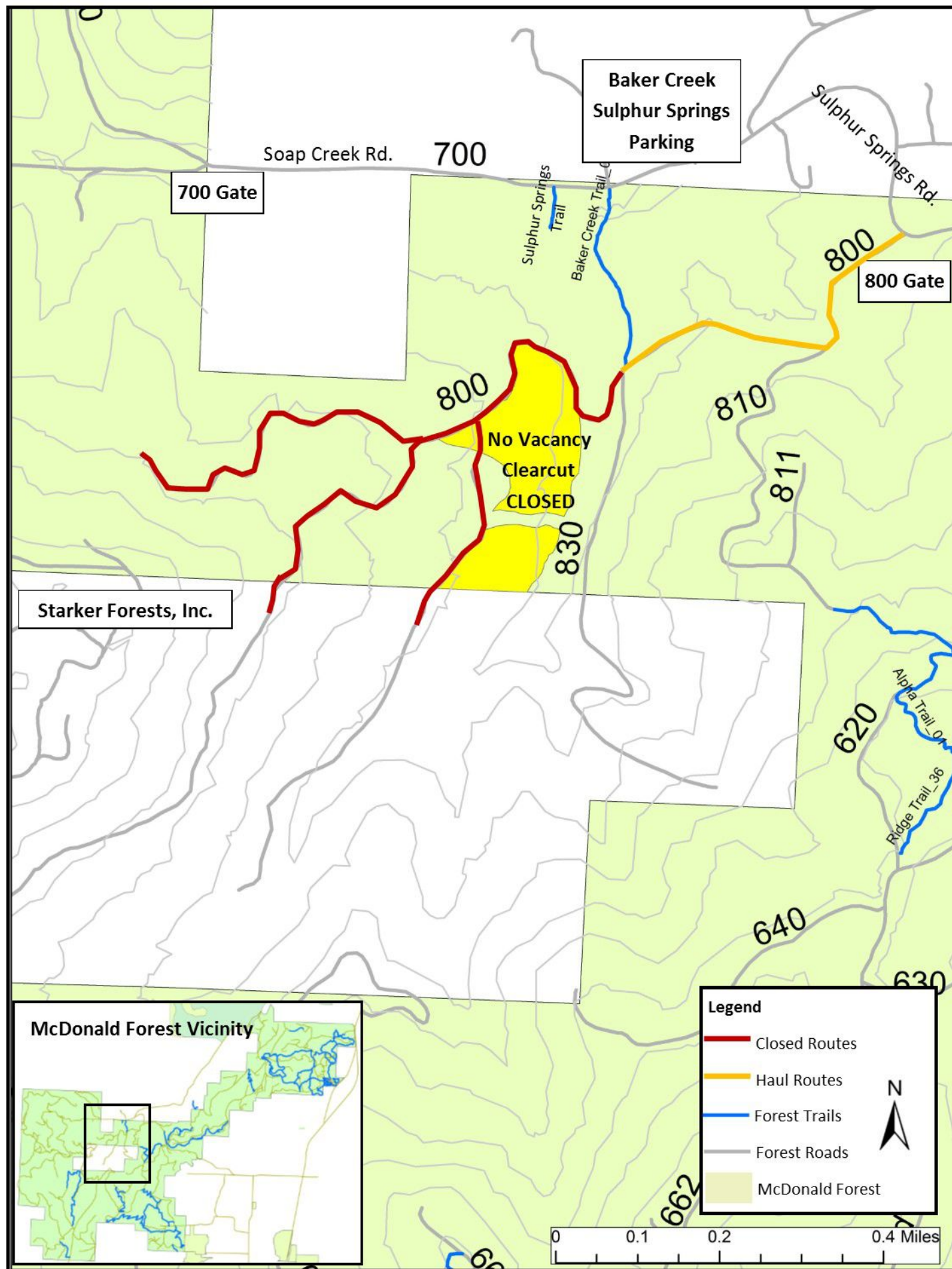
Reason for Harvest: Replacing an under-producing stand. Revenue generated will support Research Forests operations & student learning in the College of Forestry.

Know about closures before you go!

Learn more about e-mail, Facebook and web updates:
<http://cf.forestry.oregonstate.edu/more-information>

Contact us: (541) 737-4452





Public Closure

Starting 5/7/2019

Closures in effect 7 days a week, 24 hours a day



Forest closures are actively enforced by Benton County Sheriff's Office. Harvest operations are extremely dangerous—please respect posted forest closures for your safety and the safety of the harvest crews.

No Vacancy Harvest Information

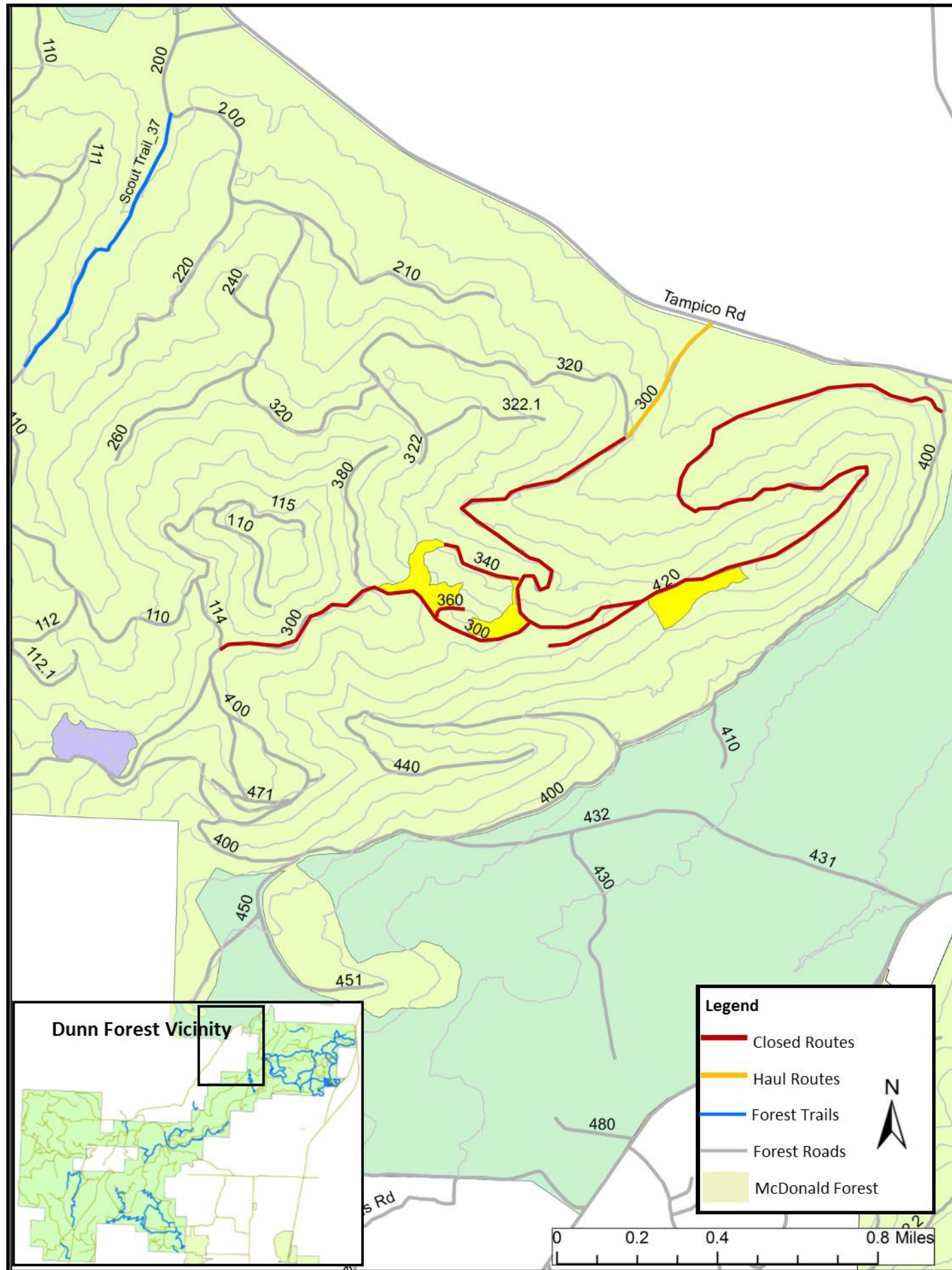
- Approximate Closure Duration:** 5/7/2019-7/7/2019
- Closed Roads:** 850, 870, portion of 800
- Closed Trails:** ALL unauthorized trails leading into closed roads and area
- Haul Routes:** 850, 800 Roads
- Size:** 17.5 acres **Prescription:** Clearcut with structure retention
- Harvest Method:** Ground based machinery
- Reason for Harvest:** Revenue generation to support Research Forest operations and student learning in the College of Forestry.

Know about closures before you go!

Learn more about e-mail, Facebook and web updates:
<http://cf.forestry.oregonstate.edu/more-information>

Contact us: (541) 737-4452





Public Closure

Starting 5/14/2019

Closures in effect 7 days a week, 24 hours a day



Forest closures are actively enforced by Benton County Sheriff's Office. Harvest operations are extremely dangerous—please respect posted forest closures for your safety and the safety of the harvest crews.

Phase 2 PLC Cleanup 2019 Harvest Information

Approximate Closure Duration: 4/17/2019-6/31/2019

Closed Roads: 300 (between 320 and 114), 340, 360, 420

Closed Trails: none

Haul Routes: 300 road

Size: 21.8 acres **Prescription:** Clear-cut with structure retention

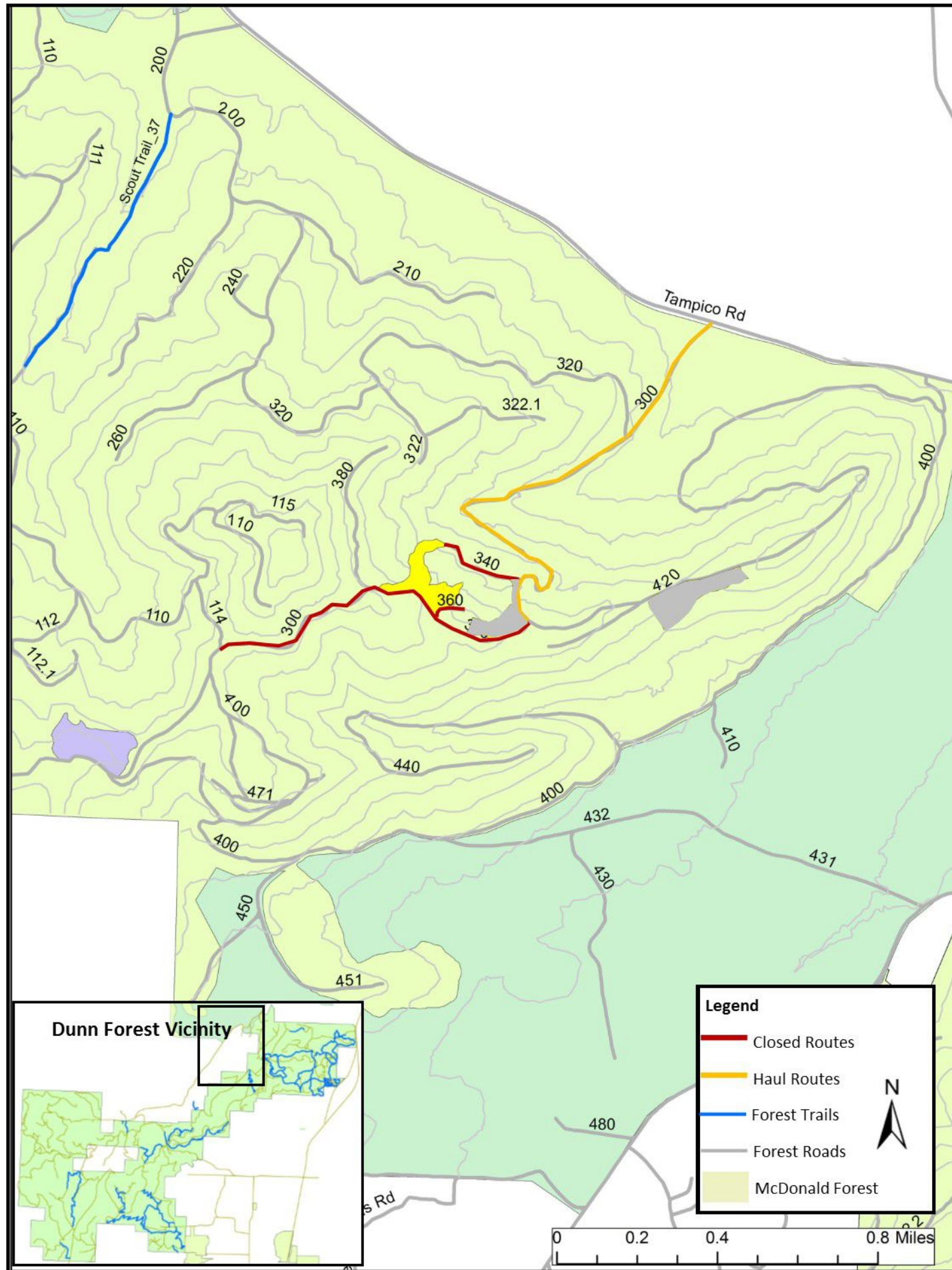
Harvest Method: Cable yarding / ground-based machinery

Reason for Harvest: Clean-up from the 2018 PLC In-Woods Live Show which offered demonstrations to foresters, students, and the community, including cable yarding and cut-to-length operations. Revenue will be used to support student learning in the College of Forestry.

Know about closures before you go!

Learn more about e-mail, Facebook and web updates:
<http://cf.forestry.oregonstate.edu/more-information>

Contact us: (541) 737-4452



Public Closure

Starting 4/17/2019

Closures in effect 7 days a week, 24 hours a day



Forest closures are actively enforced by Benton County Sheriff's Office. Harvest operations are extremely dangerous—please respect posted forest closures for your safety and the safety of the harvest crews.

Phase 1 PLC Cleanup 2019 Harvest Information

Approximate Closure Duration: 4/17/2019-6/31/2019

Closed Roads: 300 (between 420 and 114), 340, 360

Closed Trails: none

Haul Routes: 300 road

Size: 21.8 acres **Prescription:** Clear-cut with structure retention

Harvest Method: Cable yarding / ground-based machinery

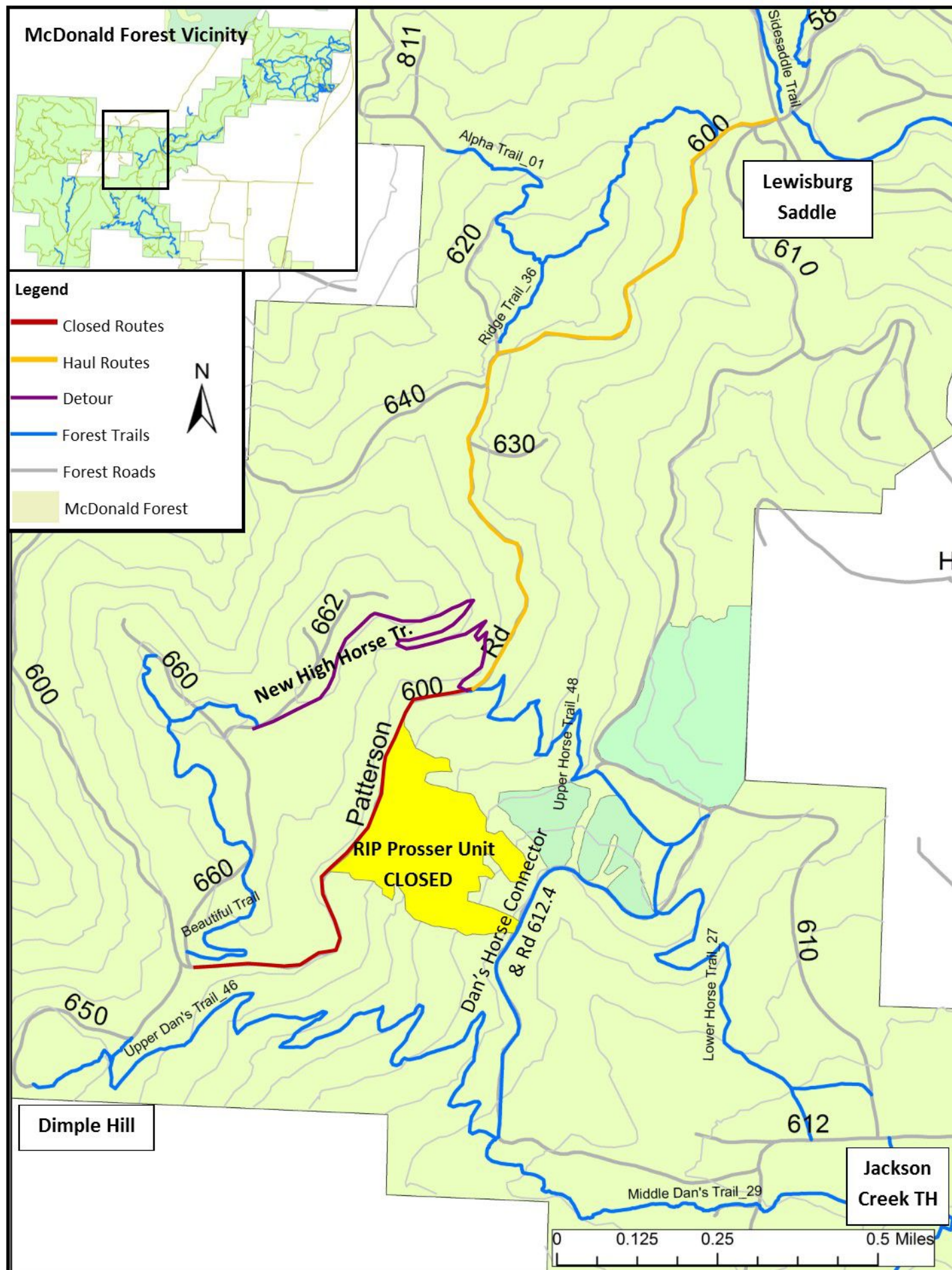
Reason for Harvest: Clean-up from the 2018 PLC In-Woods Live Show which offered demonstrations to foresters, students, and the community, including cable yarding and cut-to-length operations. Revenue will be used to support student learning in the College of Forestry.

Note: Phase 1 of this harvest will address the western-most unit as shown on the map. The middle and eastern units will be harvested later in the summer and new public information will be issued at that time.

Know about closures before you go!

Learn more about e-mail, Facebook and web updates:
<http://cf.forestry.oregonstate.edu/more-information>

Contact us: (541) 737-4452



Public Closure

Starting 4/15/2019

Closures in effect 7 days a week, 24 hours a day



Forest closures are actively enforced by Benton County Sheriff's Office. Harvest operations are extremely dangerous—please respect posted forest closures for your safety and the safety of the harvest crews.

RIP Prosser Harvest Information

Approximate Closure Duration: 4/15/2019-6/31/2019

Closed Roads: 600 road from Upper Horse Trail to 650/660 junction

Closed Trails: None

Haul Routes: 600 to Lewisburg Saddle

Size: 30 acres **Prescription:** Variable density regeneration harvest (clearcut with many trees remaining)

Harvest Method: Cable yarding

Reason for Harvest: This harvest is designed to remove suppressed, poor growing, and insect damaged conifers, replacing them with a new generation of Douglas-fir.

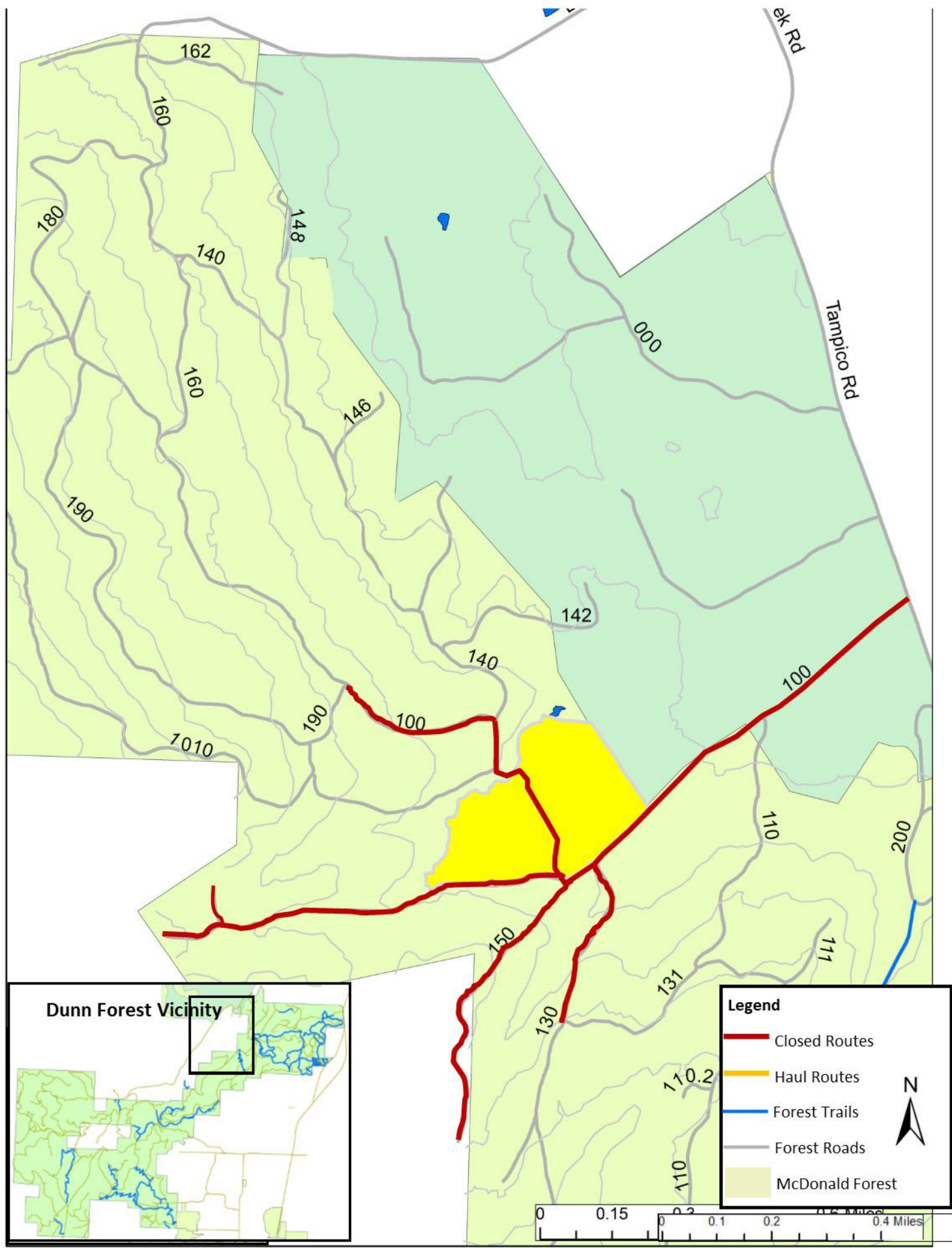
Research/Demonstration Applications: This variable density project is an alternative silvicultural prescription that couples with the Bowtie clearcut to show the different options/results for harvest management in a high visibility zone for forest visitors and valley residents.

Know about closures before you go!

Learn more about e-mail, Facebook and web updates:
<http://cf.forestry.oregonstate.edu/more-information>

Contact us: (541) 737-4452





Public Closure

Starting 8/5/19

Closures in effect 7 days a week, 24 hours a day



Forest closures are actively enforced by Benton County Sheriff's Office. Harvest operations are extremely dangerous—please respect posted forest closures for your safety and the safety of the harvest crews.

West Fork Part II Harvest Information

- Approximate Closure Duration:** 8/5/19—10/5/19
- Closed Roads:** 100 road system (130, 150, 170), affecting access to most of the northern Dunn
- Closed Trails:** none
- Haul Routes:** 100 gate
- Size:** 60.5 acres **Prescription:** Selection cutting
- Harvest Method:** Ground-based machinery
- Reason for Harvest:** This thinning will open up the over-story for light to reach a younger generation of trees. This project demonstrates multi-aged management of Douglas-fir in west side coniferous forests.

Know about closures before you go!

Learn more about e-mail, Facebook and web updates:
<http://cf.forestry.oregonstate.edu/more-information>



Contact us: (541) 737-4452

Public Closure Starting 6/14/2019

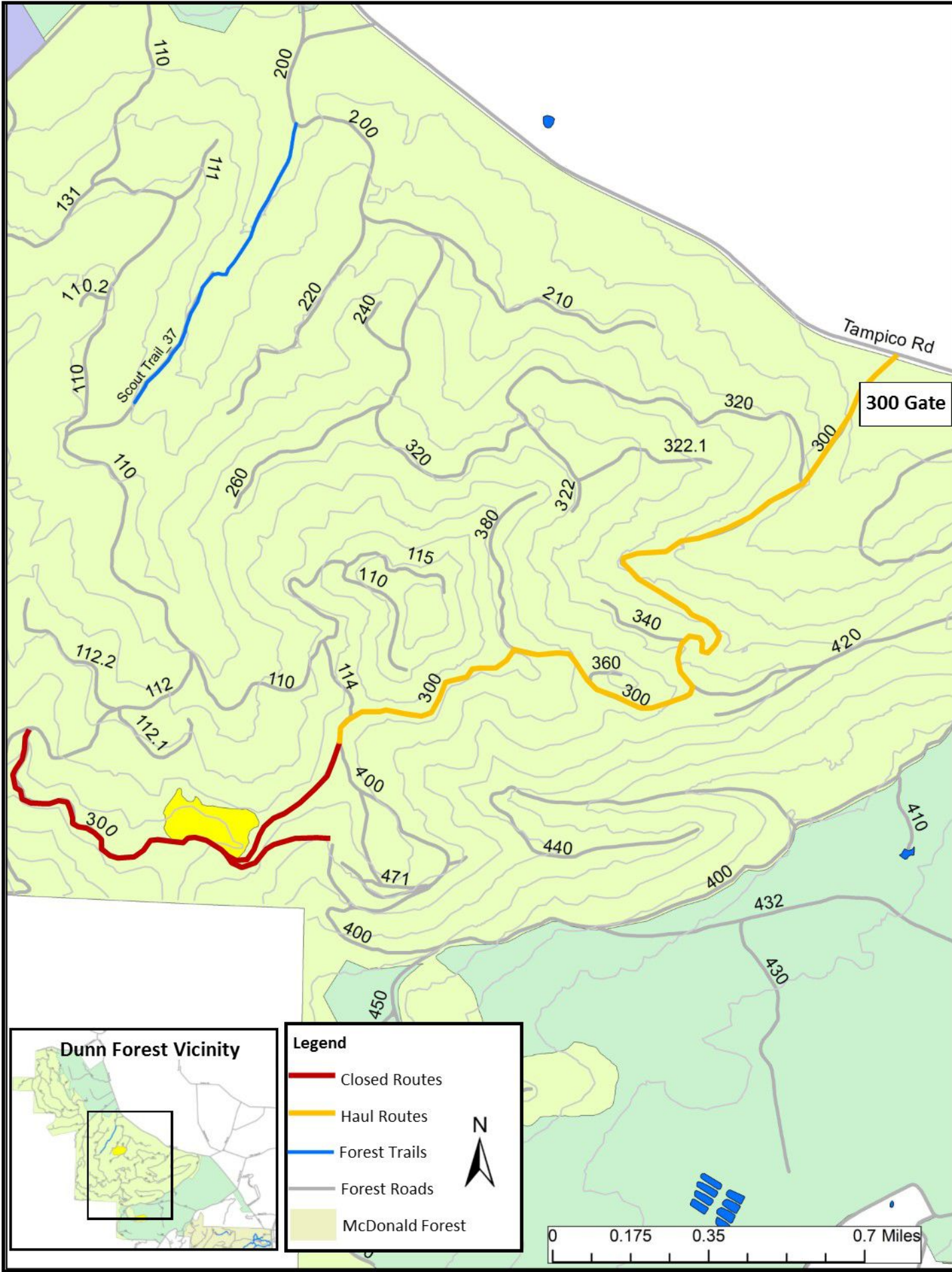
Closures in effect 7 days a week, 24 hours a day



Forest closures are actively enforced by Benton County Sheriff's Office. Harvest operations are extremely dangerous—please respect posted forest closures for your safety and the safety of the harvest crews.

White Fir Flats Harvest Information

Approximate Closure Duration: 6/14/2019-7/14/2019
Closed Roads: 300, 395
Closed Trails: none
Haul Routes: 300
Size: 11.5 acres **Prescription:** Clear-cut with structure retention
Harvest Method: Ground-based machinery
Reason for Harvest: Revenue generation to support Research Forest operations and student learning in the College of Forestry. Additionally this harvest is designed to remove dead, diseased and dying conifer trees.



Dunn Forest Vicinity

Legend

- Closed Routes
- Haul Routes
- Forest Trails
- Forest Roads
- McDonald Forest



Know about closures before you go!

Learn more about e-mail, Facebook and web updates:
<http://cf.forestry.oregonstate.edu/more-information>

Contact us: (541) 737-4452

