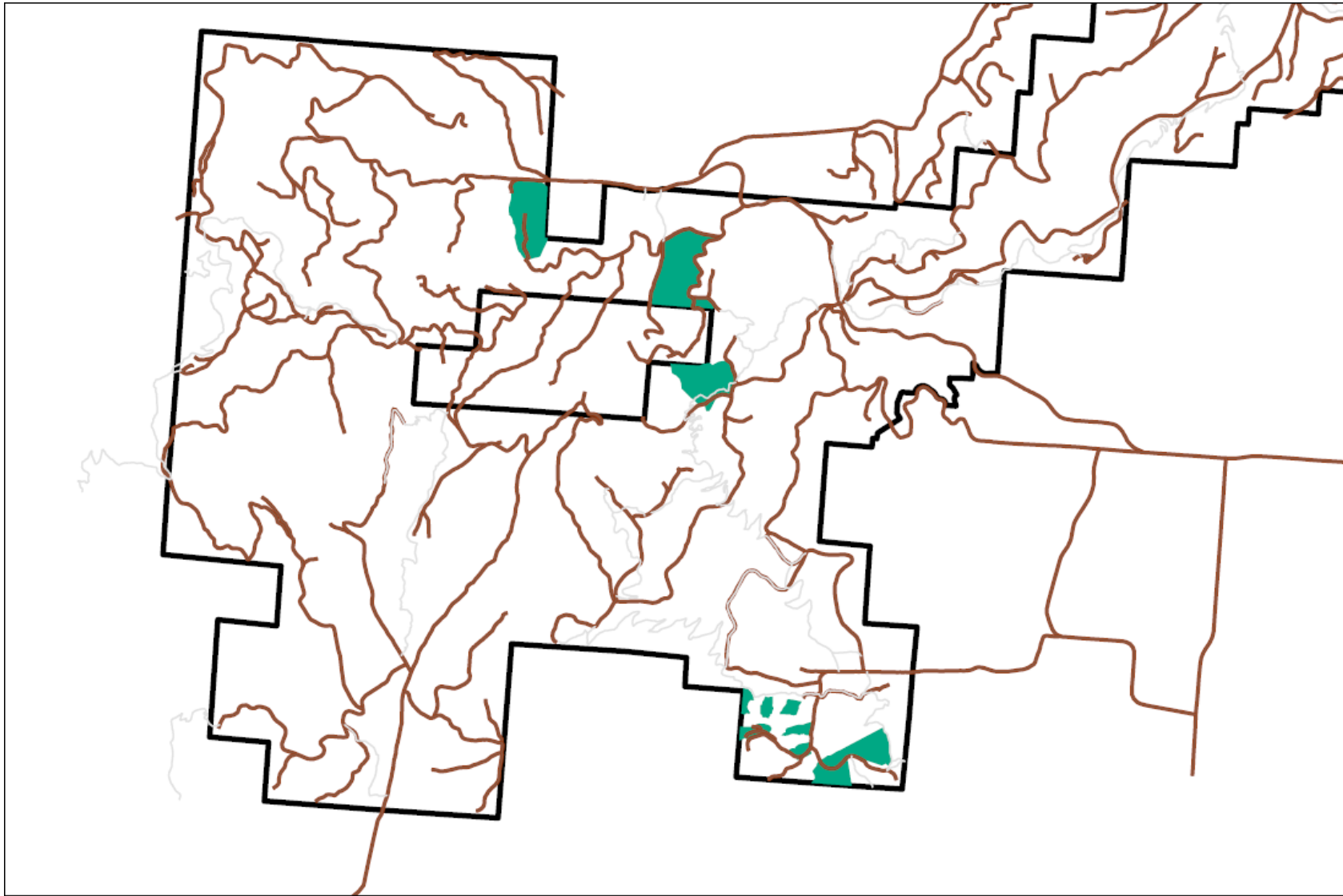


# 2023 McDonald Dunn Timber Harvests

OSU Research Forests



Oregon State  
University

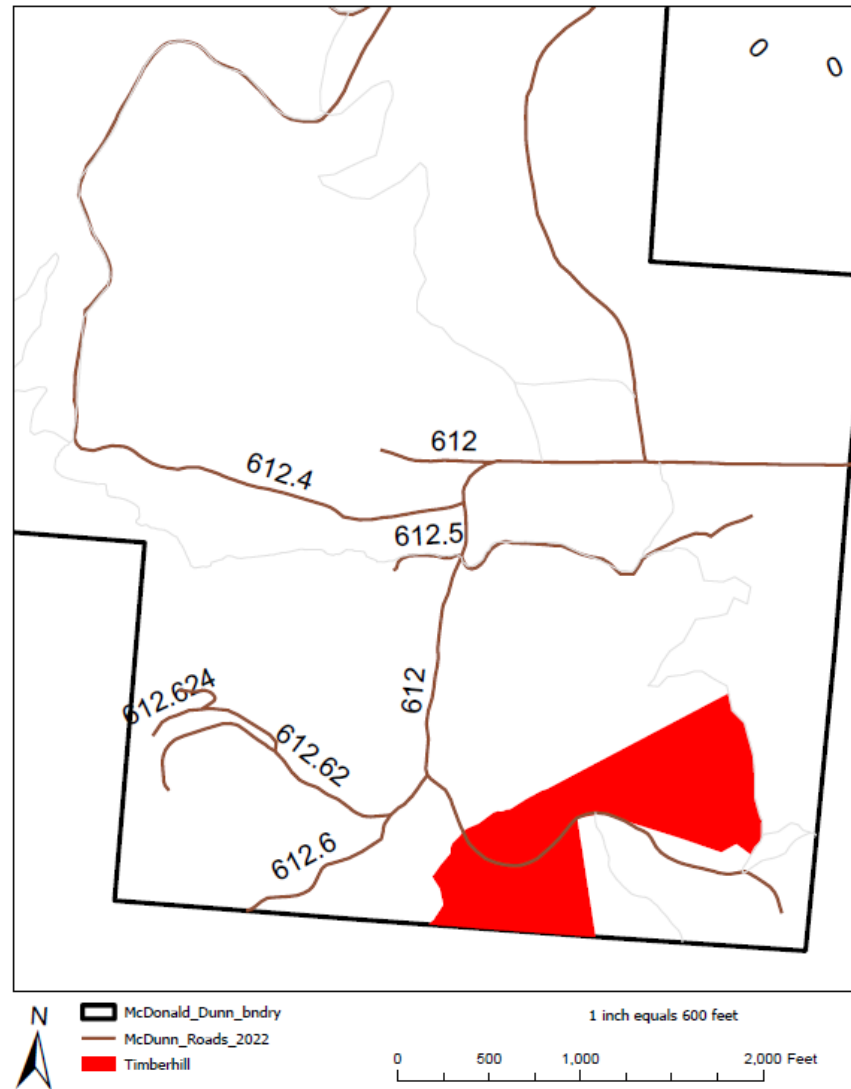


## **South Zone 2023 Harvests**

44°36'26.00"N 123°17'36.00"W

## Timberhill

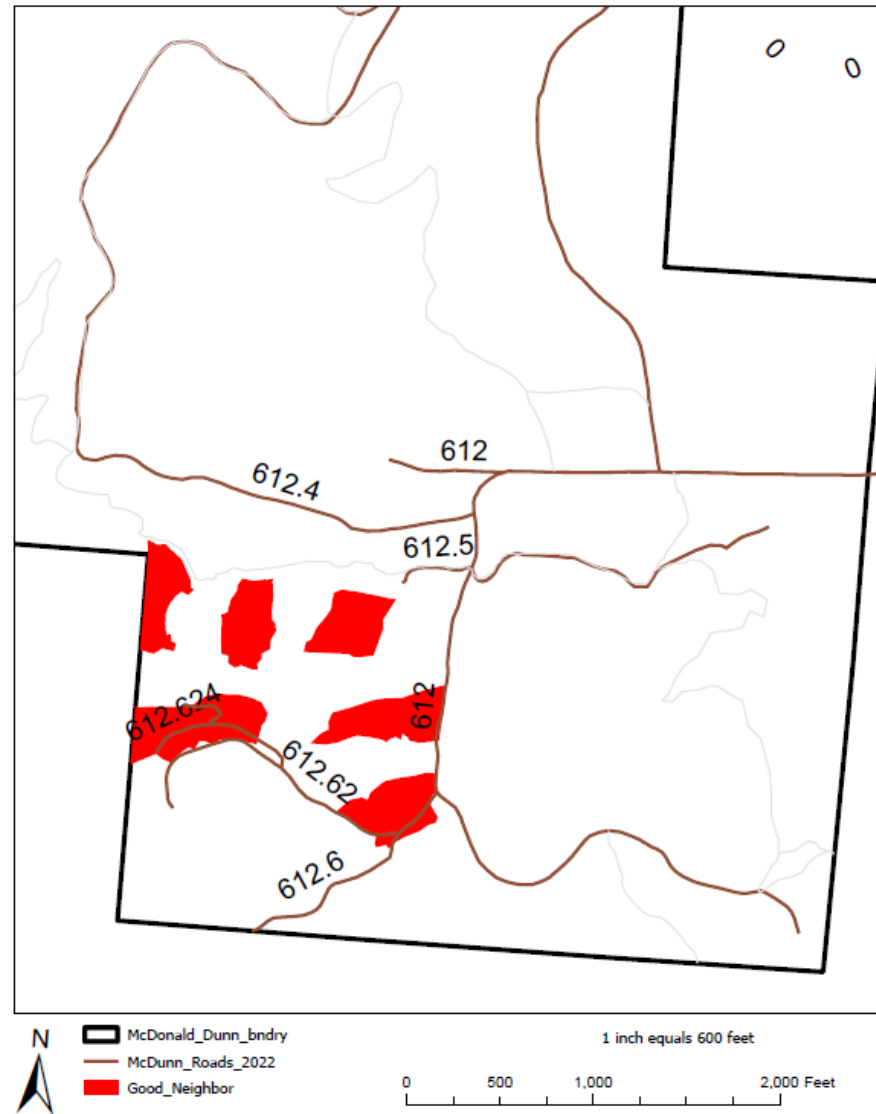
- 24.7-acres
- Stand Age: 69-81yrs old
- Thinning to a variable spacing with fuel reduction along the property line to reduce ladder fuels
- Closure of portions of the 612 road
- Closure of the Quercus Trail
- Closure of portions of Lower Dan's Trail
- Ground based logging





## Good Neighbor

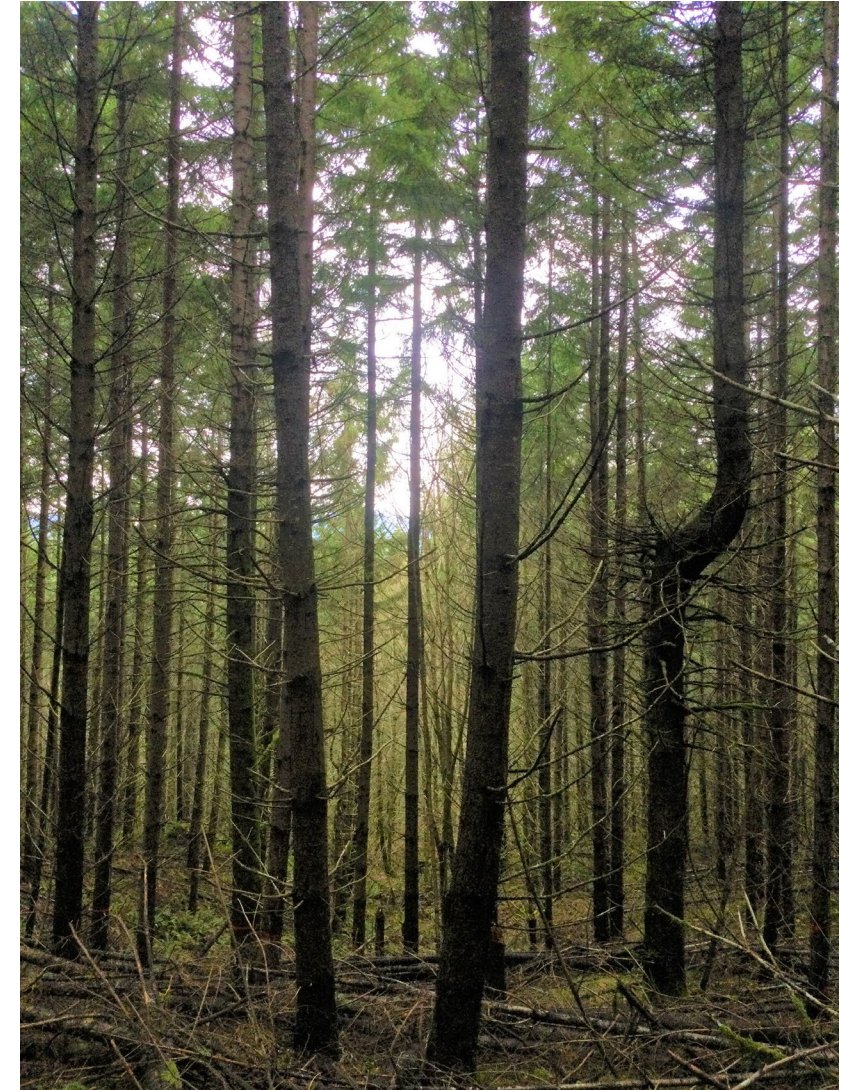
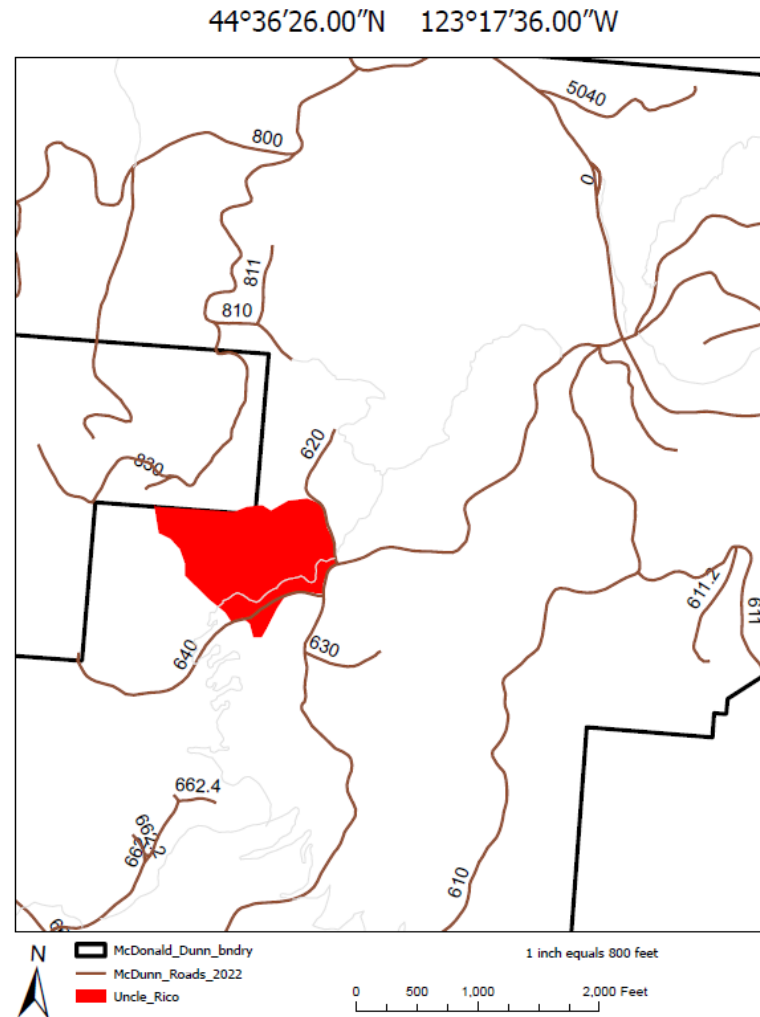
- 6 Patch cuts totaling 17.3 acres
- Stand Age: 78yrs old
- Promote multi-aged forest while maintaining structural diversity and associated habitats within the stand
- 181 wildlife trees marked for retention within the patches
- Legacy trees have been retained
- Closure of portions of Middle Dan's Trail
- Closure of portions of the 612 road
- Closure of the 612.6, 612.62 & 612.64 roads
- Ground based and cable logging





## Uncle Rico

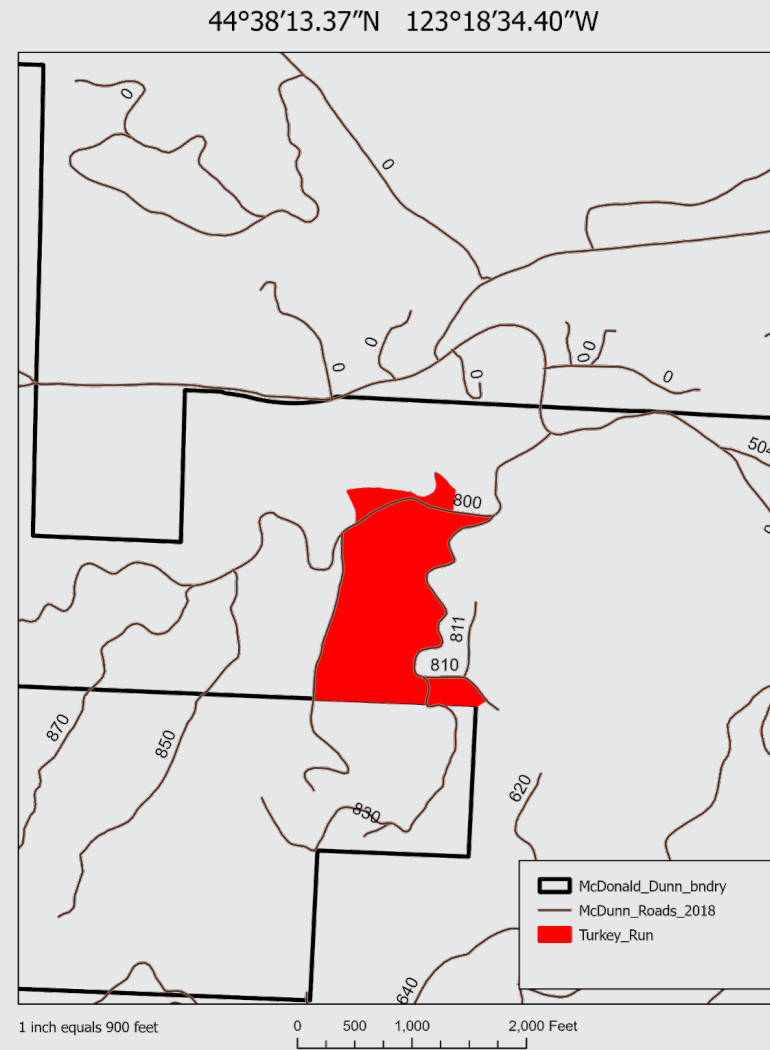
- 23.5-acre first entry thinning
- 40yr old planted stand
- Closure of a portion of the Ridge Trail
- Closure of the Bombs Away Trail
- Tethered harvester/forwarder Cut-to-Length system
- Closure of portions of the 600 road
- Closure of the 630 road, 640 road and 620 road





# Turkey Run

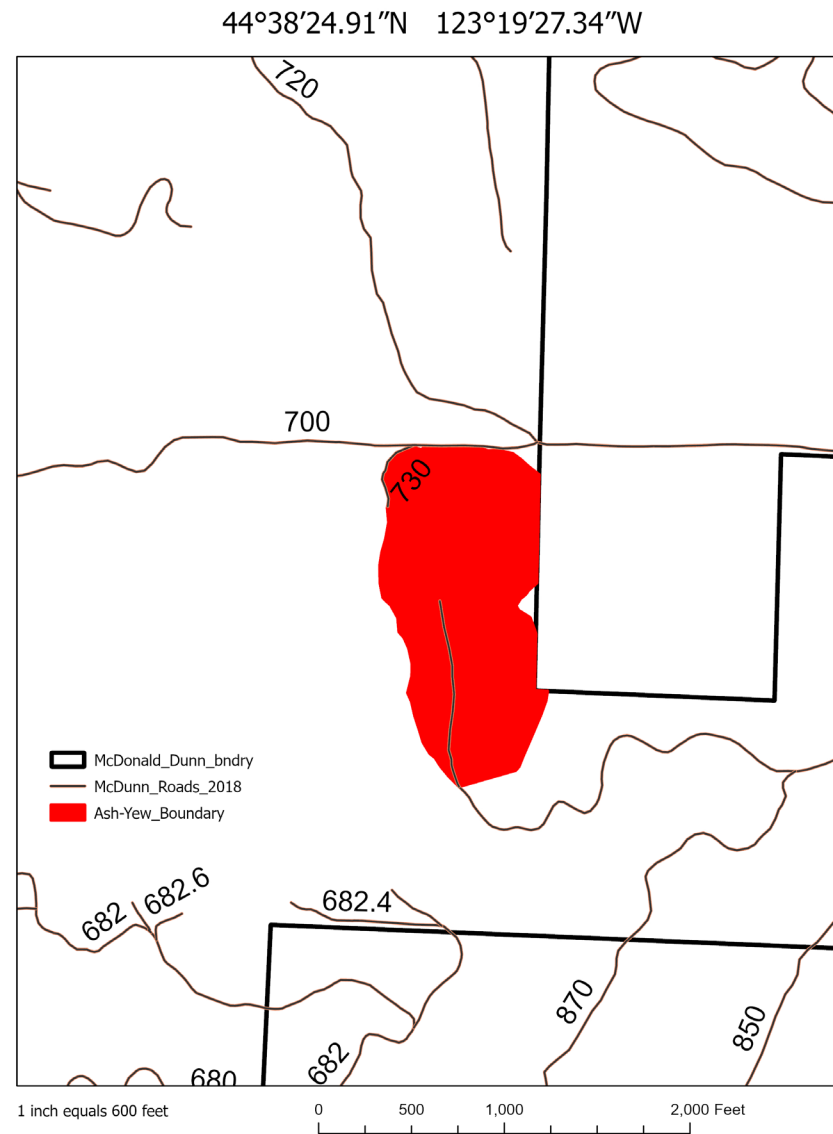
- 38.5-acre first entry thinning to a variable spacing
- 43 years old
- Closure of the 810 road, 830 road and Alpha Trail
- Project supports the Student Logging Training Program
- Ground based and cable logging



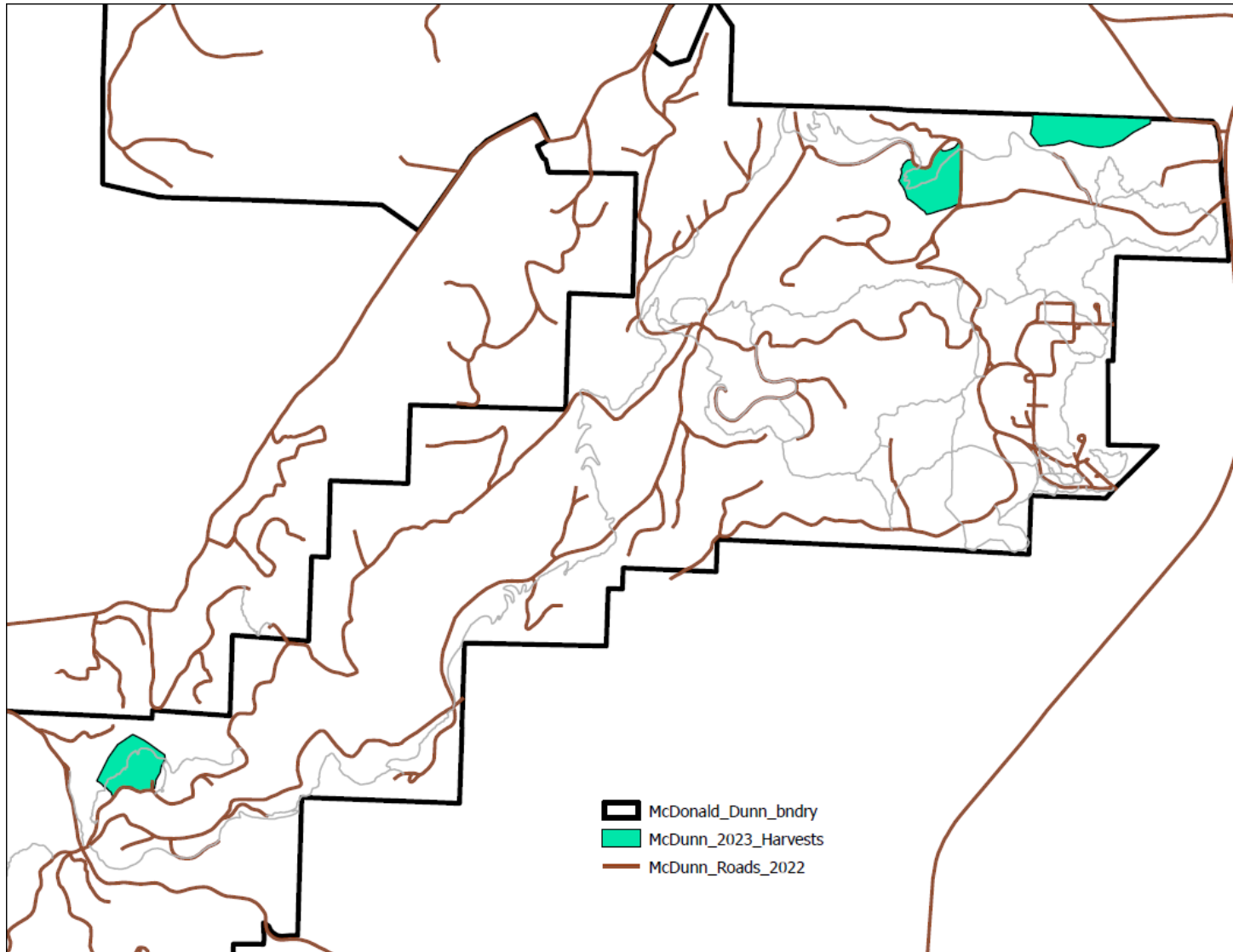


## Ash Yew

- 29.4-acres
- Clearcut with structural and visual tree retention
- 71-year-old stand
- Closure of portions of the 700 & 800 roads
- No Parking or recreational access to the 700 or 720 road during harvest
- Cable Yarding
- 215 wildlife trees marked for retention within the harvest unit
- Legacy trees have been retained



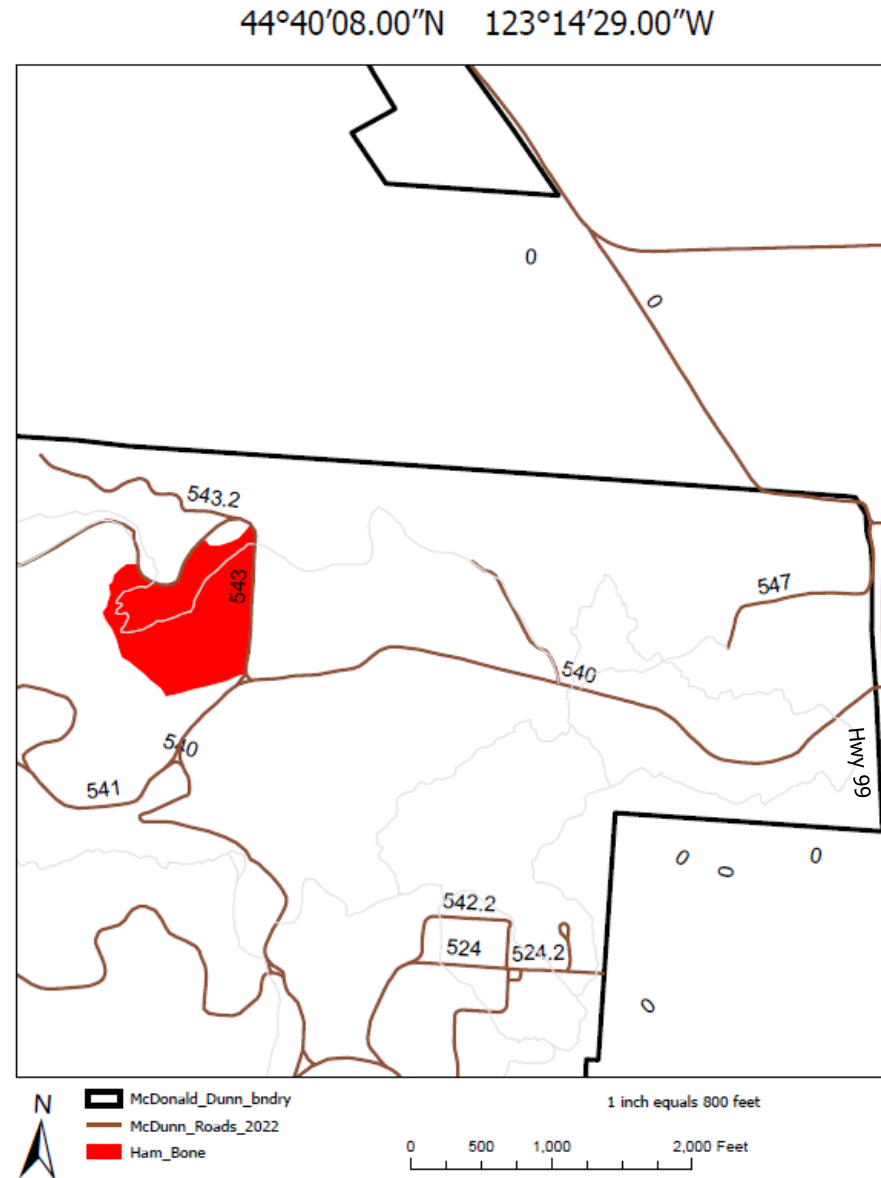




## Central Zone 2023 Harvests

# Ham Bone

- 19.5-acre
- Clearcut with structural and visual tree retention
- 78-year-old stand
- 263 wildlife trees marked for retention within the harvest unit. Legacy trees have been retained.
- Closure of 541, 543, 543.2 and 562 roads and portions of the 540 road
- Closure of portions of the Bonzai Trail
- Reduced parking at the 540 (Adair Village) gate to facilitate hauling of long Douglas-fir poles
- Ground based logging





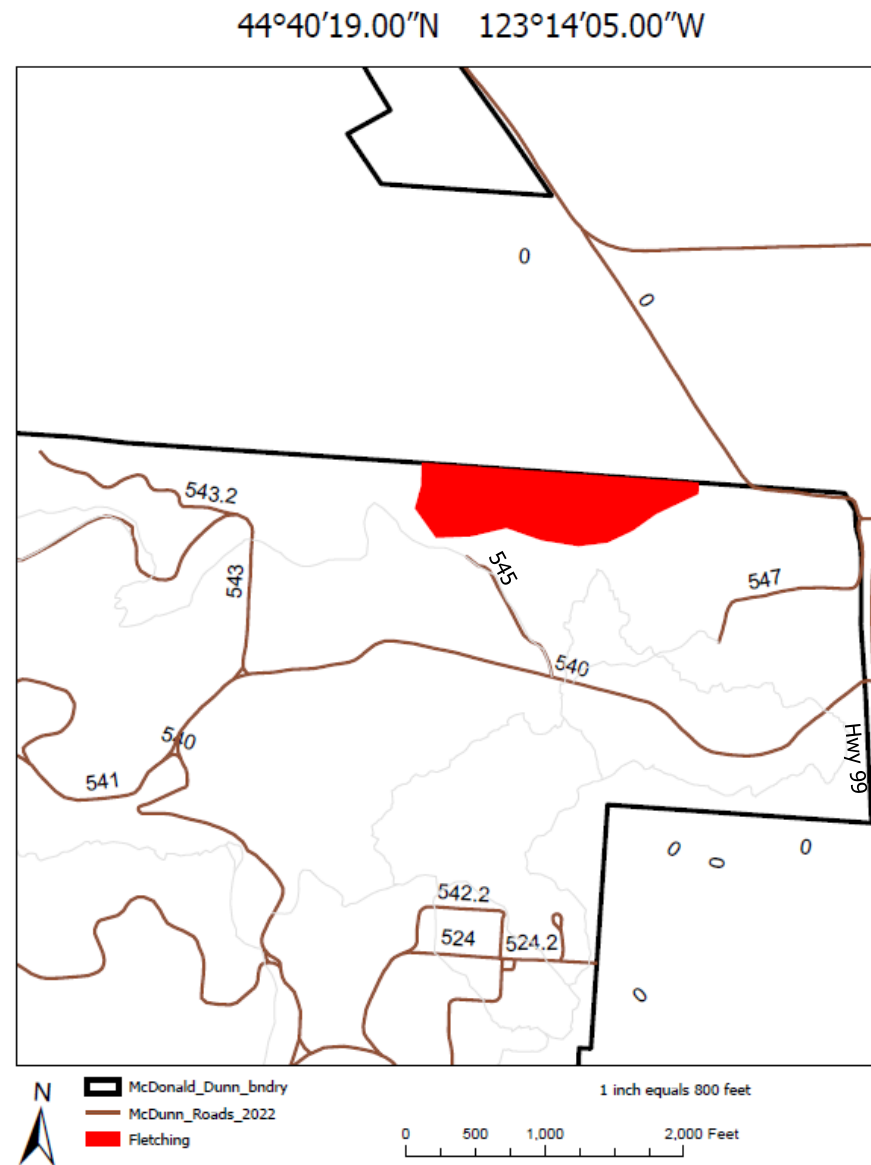
**Oregon State**  
University

**2023 McDonald Dunn Timber Harvests**

OSU Research Forests

# Fletching

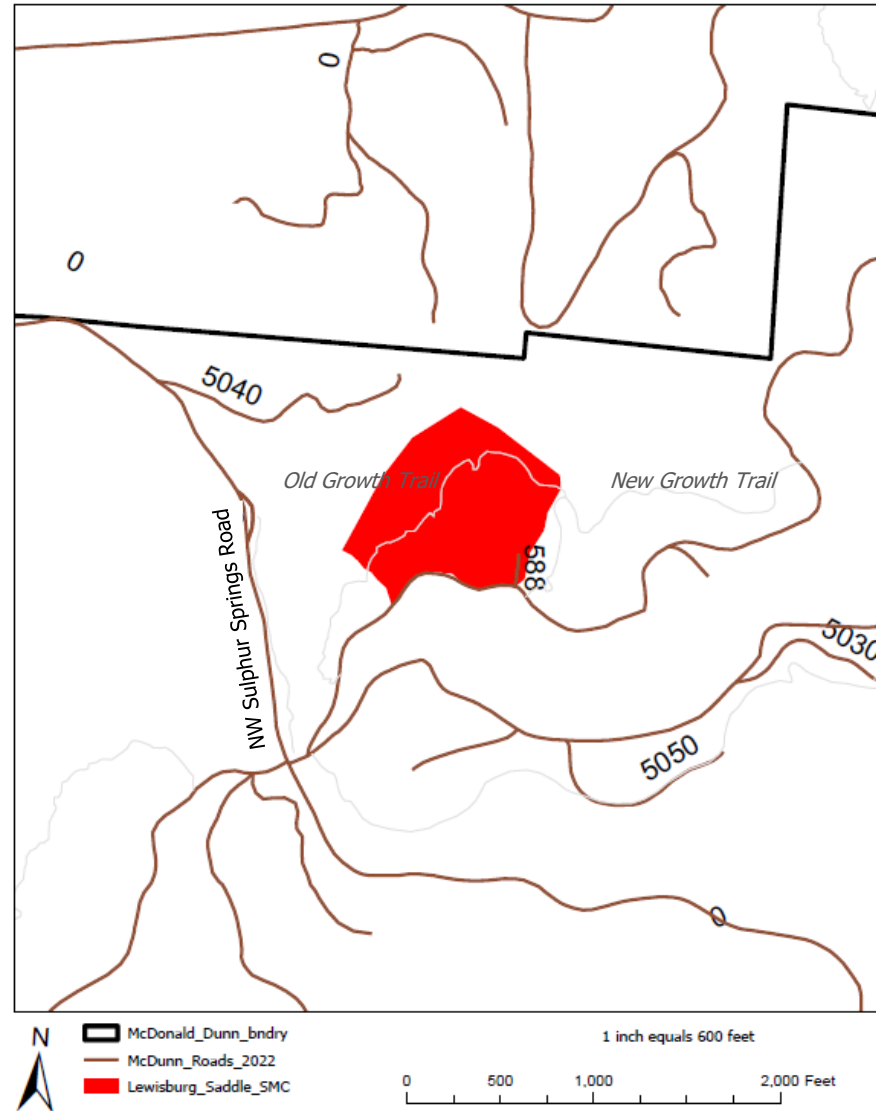
- 19.3-acres
- Clearcut with structural and visual tree retention
- 72-year-old stand
- Closure of the 545 road
- Closure of portions of the Bonzai Trail
- Reduced parking at the 540 (Adair Village) Gate to facilitate hauling of long Douglas-fir poles
- 95 wildlife trees marked for retention within the harvest unit. Legacy trees retained.
- Ground based logging





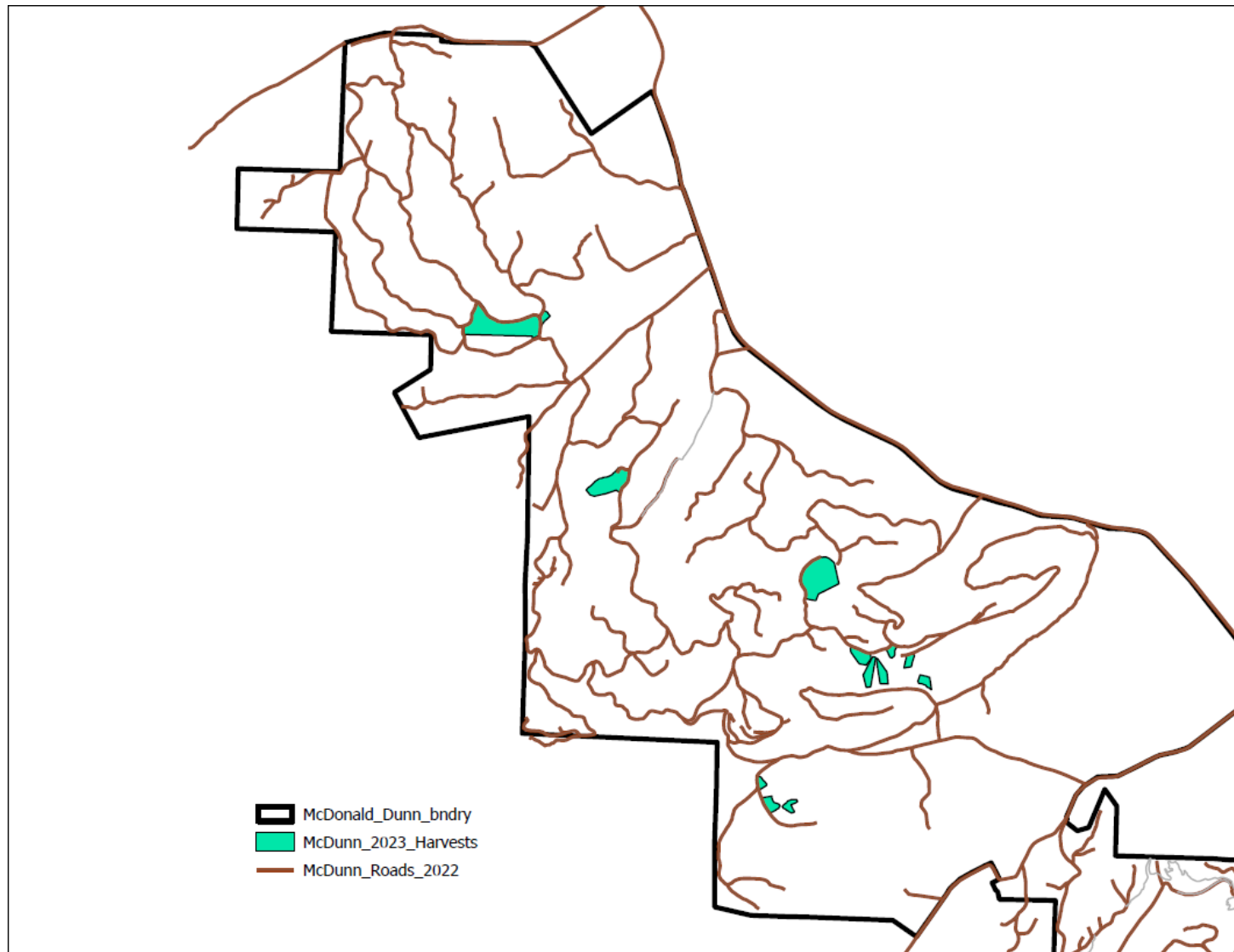
## Lewisburg Saddle SMC

- 17.2-acre thinning first entry thinning
- 35-year-old planted stand
- Closure of the New Growth Trail, closure of the Old Growth Trail, closure of the Firehouse Trail
- Closure of portions of the 580 road
- Closure of the 584 road and 586 road
- Tethered harvester/forwarder Cut-to-Length system
- Long term research project facilitated by the CoOp for Intensive Planted Silviculture



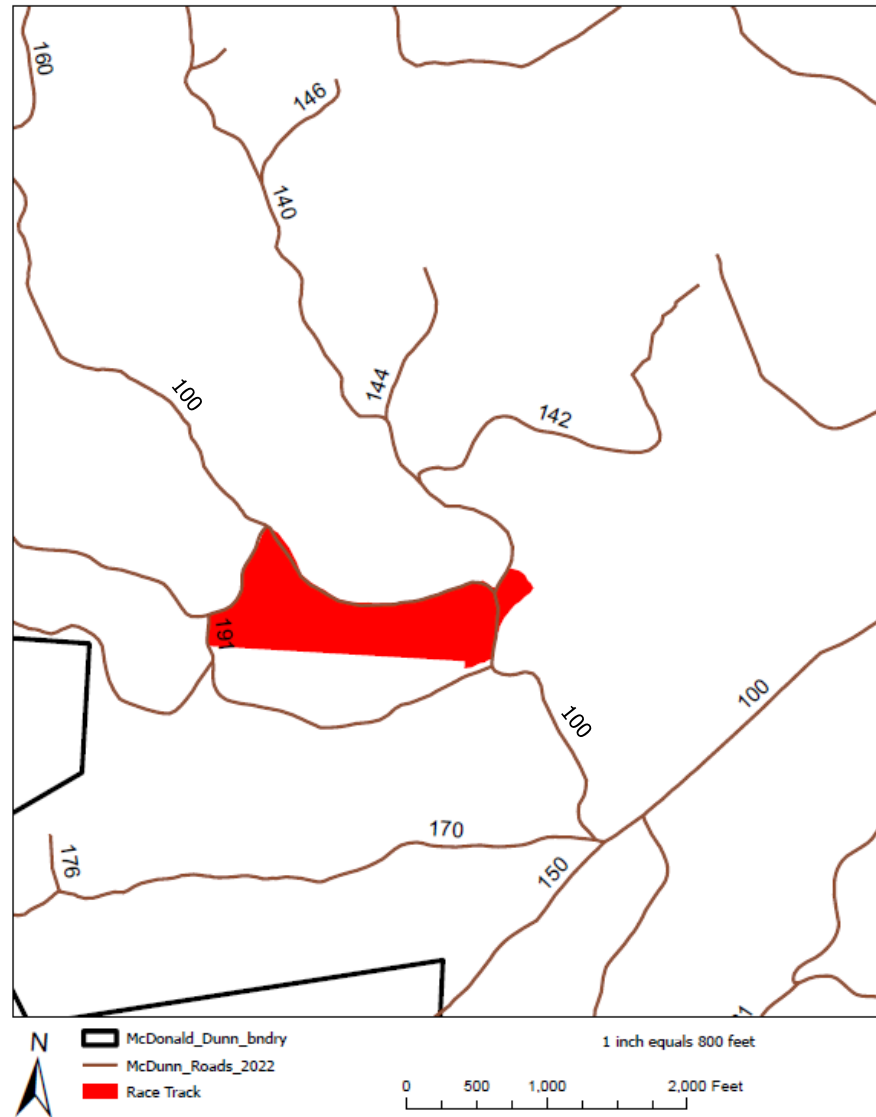


# North Zone 2023 Harvests



## Race Track

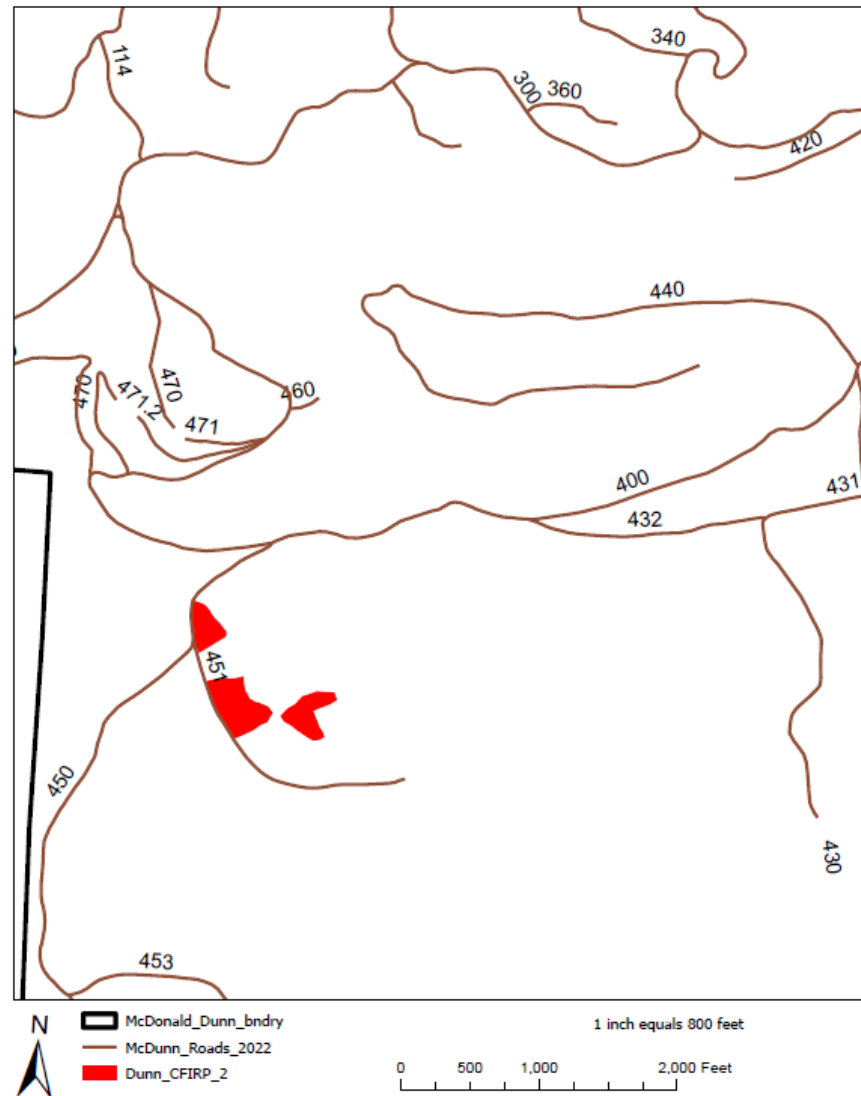
- 24.4-acres
- Clearcut with structural and visual tree retention
- 78-year-old stand
- Closure of portions of the 100 road
- Reduced parking at the 100 Gate to facilitate hauling of long Douglas-fir poles
- 94 wildlife trees marked for retention within the harvest unit
- Legacy trees have been retained
- Ground based logging





## Dunn CFIRP 2

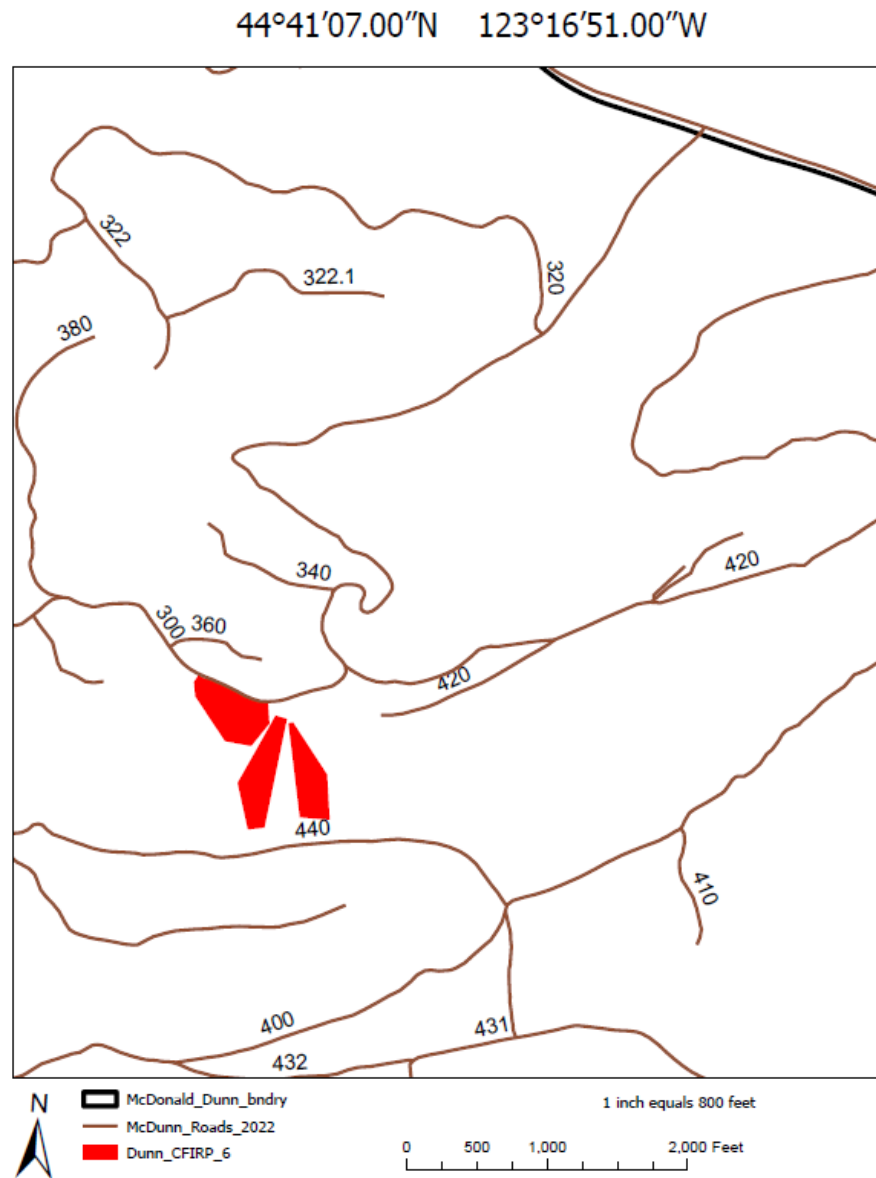
- Three patch cuts totaling 5.8-acres
- 101 years old
- Harvest is part of the long-term CFIRP Research Project studying Ecological and Socioeconomic Response to Alternative Silviculture Treatments
- Closure of the 450 road, 451 road, and 453 road
- Oak Restoration in one of the patches
- 79 wildlife trees marked for retention within the project area
- Legacy trees have been retained
- Ground based logging





## Dunn CFIRP 6

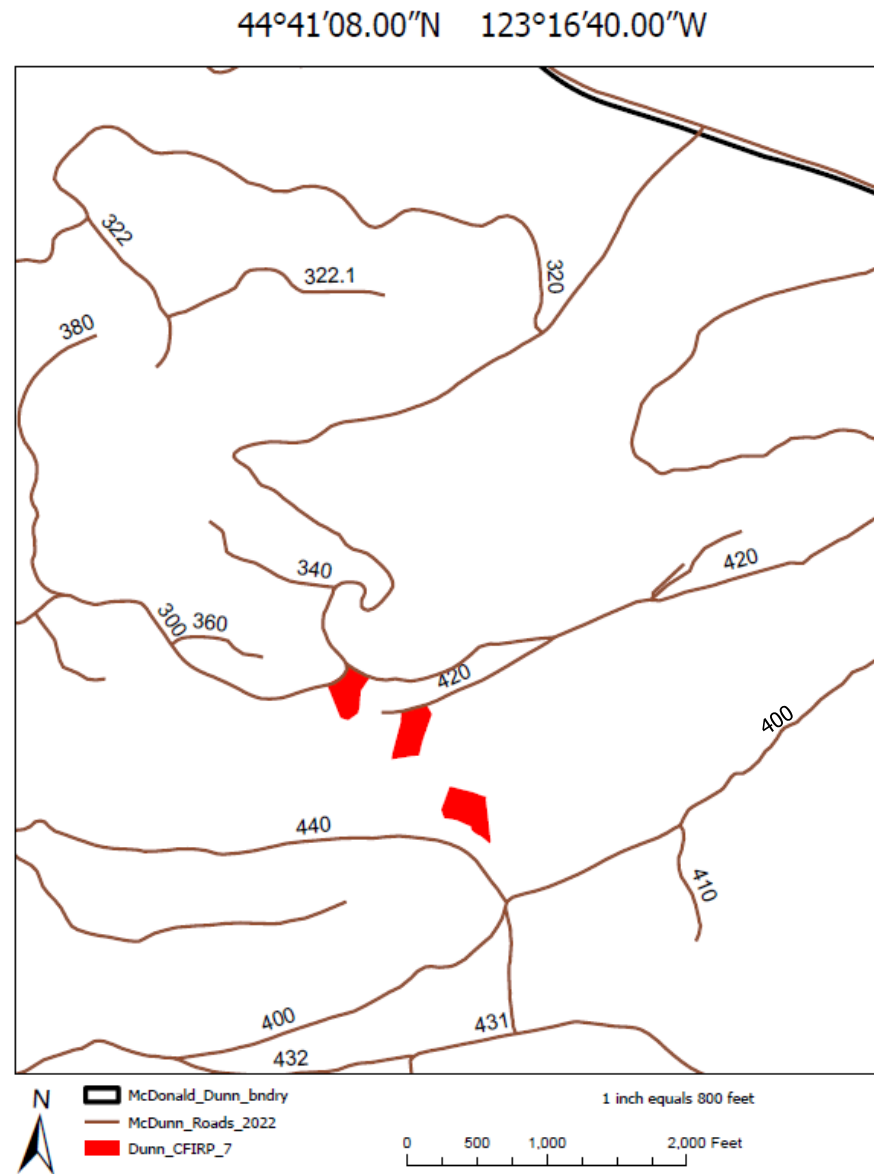
- Three patch cuts totaling 9.5-acres
- 99-160 years old
- Harvest is part of the long-term CFIRP Research Project studying Ecological and Socioeconomic Response to Alternative Silviculture Treatments
- Closure of portions of the 300 road
- Closure of the 440 road, 380 road and 360 road
- 104 wildlife trees marked for retention within the project area
- Legacy trees have been retained within the patches
- Cable logging





## Dunn CFIRP 7

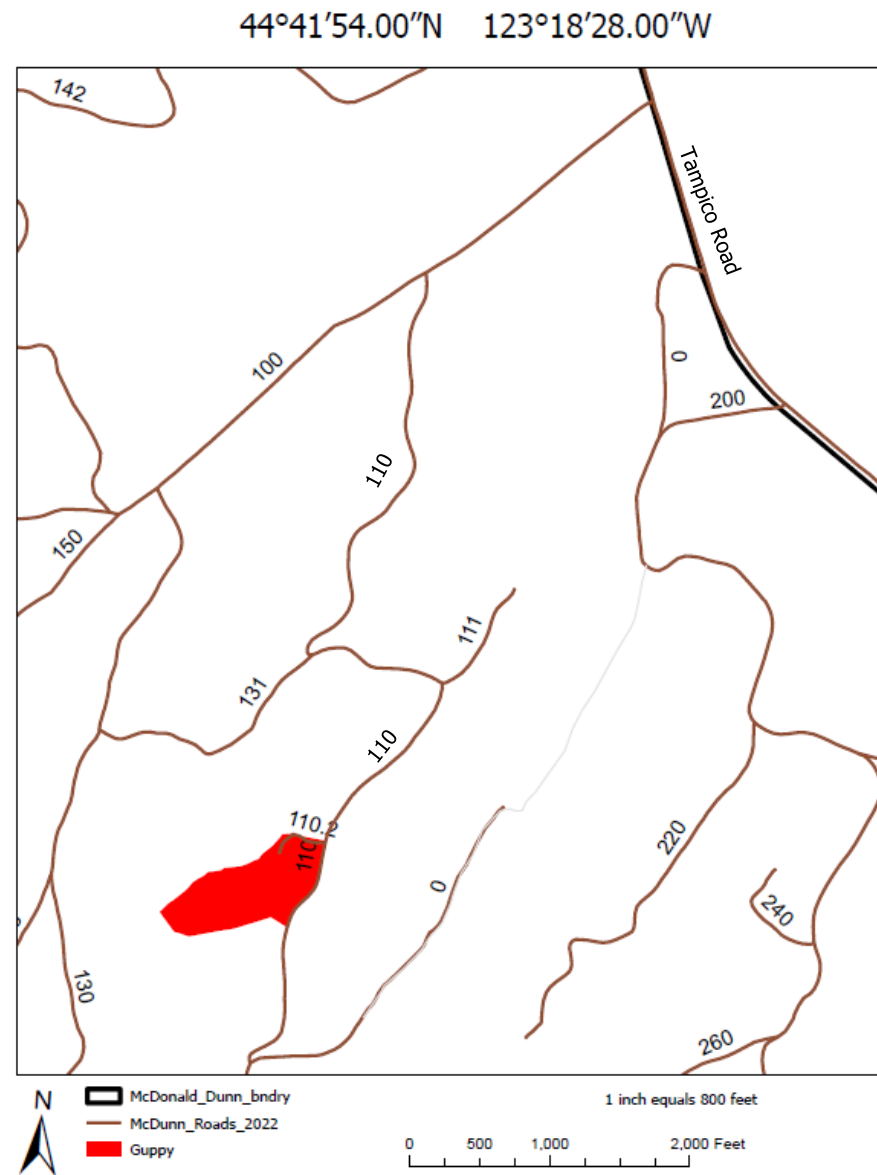
- Three patch cuts totaling 4.9-acres
- 135 years old
- Harvest is part of the long-term CFIRP Research Project studying Ecological and Socioeconomic Response to Alternative Silviculture Treatments
- Closure of portions of the 300 road
- Closure of the 420 and 440 road
- 50 wildlife trees marked for retention within the project area
- Legacy trees have been retained within patches
- Ground based and cable logging





# Guppy

- 10.9-acres
- Clearcut with structural and visual tree retention
- 51-year-old stand
- Closure of portions of the 110 road
- Closure of the 110.2 & 111 road
- 46 wildlife trees marked for retention within the harvest unit
- Legacy trees have been retained
- Ground based logging





## Re-Start

- 18.1-acre thinning
- Closure of the 380 road
- Cable Yarding
- Project supports the Student Logging Training Program





## Stay informed.

- Check out our [Forest Update](#) webpage
- [Sign up](#) for our Forest Update email list
- Check out our [interactive harvest web-map](#) for the real time status of harvest operations and closures.

