

A person wearing an orange hard hat and a grey jacket is standing in a forest, looking down at a notebook. The forest is dense with green ferns and trees. The text "McDonald & Dunn Forest Management Planning Process" is overlaid in white.

McDonald & Dunn Forest Management Planning Process

Spring 2022 – Fall 2023

OSU College of Forestry
McDonald-Dunn Research Forest Faculty Planning Committee Meeting #6
125 Peavy Forest Science Center or Zoom ([Join Zoom Meeting](#))
20 December 2022, 1-3pm

Agenda

Meeting Purpose:

- *Discuss recent events*
- *Refine the 'overarching principles' document to be shared with the SAC*
- *Consider elements of the new forest management plan*

Start Time	Activity
1:00pm	Overview of recent and upcoming events Review where we've been and where we're going
1:30pm	Review and refine the draft 'Overarching Principles'
2:10pm	Home in on 'Management regimes' and 'Scenarios' for the new plan
2:40pm	Envision components of the new plan
2:55pm	Next steps
3:00pm	Adjourn

McDonald & Dunn Forest Planning Timeline

Date	Meeting type
June 14	Joint SAC-FPC Meeting
Aug 30	SAC meeting #1
Aug 31	Community Listening Session #1
Sept 16	FPC meeting #1
Sept 20	SAC meeting #2
Oct 11	FPC meeting #2
Oct 25	FPC meeting #3
Nov 7	Community Listening Session #2
Nov 22	FPC meeting #4
Dec 5	SAC meeting #3
Dec 6	FPC meeting #5
Dec 13	SAC meeting #4
Dec 20	FPC meeting #6

McDonald & Dunn Research Forests Management Planning Process

Phase I: Information gathering, Discussions, Assessment of former FMP (Spring-Summer 2022)

Initial Interviews

Inventory of COF
Academic Use

Community Listening
Session I

Stakeholder Advisory
Committee Meetings

Faculty Planning
Committee Meetings

Comment / Question
Submission



Phase II: Synthesizing, Modeling, Refining (Fall 2022-Spring 2023)

Stakeholder Advisory
Committee Meetings

Faculty Planning
Committee Meetings

Community Listening
Session II

Academic User
Listening Session

Community Input
Sessions I & II

Comment / Question
Submission



Phase III: Finalizing (Summer-Fall 2023)

Presentation of draft plan to the Dean &
Forestry Executive Committee for review

Forest management plan refinement

Forest management plan approval by Dean

McDonald & Dunn Research Forests Management Planning Process

PHASE I	INFORMATION GATHERING, DISCUSSIONS, ASSESSMENT OF 2005 PLAN
[PHASE Ia]	Information Gathering:
[PHASE Ib]	Discussions, Assessment of 2005 Plan:
PHASE II	SYNTHESIZING, MODELING, REFINING, WRITING
[PHASE IIa]	Synthesizing:
[PHASE IIb]	Modeling, Refining:
[PHASE IIc]	Writing:
PHASE III	WRITING, FINALIZING

[Compact overview of the plan development process]



Oregon State
University

College of Forestry
Research Forests

About

Our Forests

Recreation

Research

COMMUNITY LISTENING SESSION

The video from our community listening session on November 7 is now available.

[VIEW THE RECORDING](#)

MCDONALD-DUNN RESEARCH FOREST PLANNING PROCESS



The OSU College of Forestry is developing a new management plan for the McDonald and Dunn Research Forests, which is anticipated to be ready for implementation in 2024. This new plan will determine how the forests provide opportunities for teaching, research and outreach efforts of the College of Forestry. The new research forest plan will reflect the college's diverse values, and will position the McDonald-Dunn Research Forest to be a model example of multiple value forest management. Management decisions and activities on the McDonald-Dunn Research Forest will be driven by College of Forestry research agendas, education and demonstration opportunities, and considerations of an inclusive balance of forest uses and values.

The process of developing the new management plan will involve opportunities for public input, and two committees working in tandem from spring 2022 through fall 2023.

- Public input opportunities include three Community Listening Sessions, a [webform](#) through which written comments can be provided, and an [email](#) to which written questions can be sent.
- Two committees will assist in the development of the new plan: an external Stakeholder Advisory Committee (SAC) and College of Forestry Faculty Planning Committee (FPC). Comments submitted through the webform will be forwarded to these committees.

Upcoming Meetings & Events:

- Dec. 20, 1:00pm - 3:00pm, Faculty Planning Committee Meeting ([agenda](#), open to the public to listen remotely through Zoom but not comment; video recording will be posted online after the meeting)
Zoom link: <https://oregonstate.zoom.us/j/96755120416?pwd=WGFldTgzZW5WOTJuOVpXekRVZldjdjZ09>

Past Meetings & Events:

- June 14, 2022, SAC and FPC Joint Kickoff Meeting ([agenda](#), [video](#), [meeting summary](#))
- Aug 30, 2022, SAC Meeting ([agenda](#), [presentation](#), [meeting summary](#))
- Aug. 31, 2022, Community Listening Session ([agenda](#), [presentation](#), [meeting summary](#))
- Sept. 16, 2022, Faculty Planning Committee Meeting ([agenda](#), [presentation](#), [meeting summary](#))
- Sept. 20, 2022, Stakeholder Advisory Committee Meeting ([agenda](#), [presentation](#), [video recording](#), [meeting summary](#))
- Oct. 11, 2022, Faculty Planning Committee Meeting ([agenda](#), [presentation](#), [video recording](#), [meeting summary](#))
- Oct. 25, 2022, Faculty Planning Committee Meeting ([agenda](#), [presentation](#), [video recording](#), [meeting summary](#))
- Nov. 7, 2022, Community Listening Session ([agenda](#), [presentation](#), [video recording](#), [meeting summary](#))
- Nov. 22, 2022, Faculty Planning Committee Meeting ([agenda](#), [presentation](#), [video recording](#), [meeting summary](#))
- Dec. 5, 2022, Stakeholder Advisory Committee ([agenda](#), [presentation](#), [video recording](#))
- Dec. 6, 2022, Faculty Planning Committee Meeting ([agenda](#), [presentation](#), [video recording](#)) - Remarks made by an individual during the Dec 6 Faculty Planning Committee meeting do not reflect the values of the university or the College of Forestry, or our shared commitment to respectful discussion and engagement. The College appreciates all input being provided in planning the future of the McDonald-Dunn Research Forests and is committed to listening to and considering all perspectives with respect. An apology for these remarks was made during the Stakeholder Advisory Committee meeting on Dec 13.
- Dec. 13, 2022, Stakeholder Advisory Committee Meeting ([agenda](#), [video recording](#))

SUBMIT YOUR COMMENTS

SUBMIT YOUR QUESTIONS

STAY CONNECTED

READ PUBLIC COMMENTS

HISTORIC DOCUMENTS - MCDONALD-DUNN RESEARCH
FOREST PLANNING 2004-PRESENT

McDonald & Dunn Research Forests Management Planning Process

PHASE II SYNTHESIZING, MODELING, REFINING, WRITING	
[PHASE IIa]	Synthesizing: <u>SAC meetings III & IV</u> <i>-write synthesis document and share with FPC</i> <i>-consider 'themes' ('management regimes') for new plan</i> <i>-consider scenarios (proportions of each 'management regime')</i> <i>-consider necessary components of new plan</i> <u>FPC meetings IV, V, & VI</u> <i>-write overarching principles document and share with SAC</i> <i>-consider 'themes' ('management regimes') for new plan</i> <i>-consider scenarios (proportions of each 'management regime')</i> <i>-consider necessary components of new plan</i>
[PHASE IIb]	Modeling, Refining: <div>Round 1</div> Forest growth and development modeling (consultant) Ecosystem service modeling (consultant) 1st round: evaluation of alternatives (SAC, FPC, Community Input Session I) <div>Round 2</div> Forest growth and development modeling (consultant) Ecosystem service modeling (consultant) 2nd round: evaluation of alternatives (SAC, FPC, Community Input Session II)
[PHASE IIc]	Writing: Drafting of chapters (various work groups and individuals)

Detailed view of Phase II of the plan development process

Editing of the Overarching Principles document...

McDonald-Dunn Research Forests

Overarching Principles Guiding New Forest management Plan - Working Draft

Each principle described below reflects the Vision/Mission/Goals identified for the Research Forests plus input received from the Stakeholder Advisory Committee (SAC), Faculty planning Committee (FPC), or the general public sometime between June and November 2022. Each principle is written so as to provide overarching suggestions for the management of the McDonald-Dunn Research Forest in the context of the [three missions of the College of Forestry Research Forests](#).

FOUNDATIONAL PREMISES

Operate as an actively managed forest that advances the forestry profession by informing best practices in all aspects of forest management. The McDonald-Dunn Research Forest will continue to be a working forest that provides opportunities for research, teaching, and outreach while providing social and cultural benefits to a variety of users including the College of Forestry, Oregon State University, and the surrounding community.

Serve as a demonstration forest that provides diverse research and learning opportunities for students and the public, while being open for public use. The forest will provide learning opportunities on all aspects of active forest management, demonstrating principles associated with sustainably managing forests for multiple values. The forest will also provide a wide variety of use values to the public.

Be adaptive and accountable. Feasible monitoring expectations will be built into the plan to enable adaptive management. The plan will incorporate enough flexibility to allow for adjustments over time in response to unforeseen opportunities and constraints as well as new information produced on the College Forests and elsewhere.

CREATE LEARNING OPPORTUNITIES

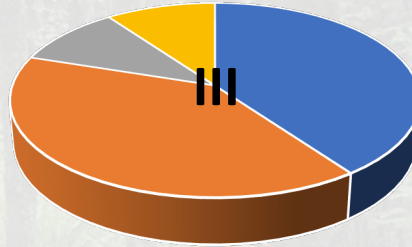
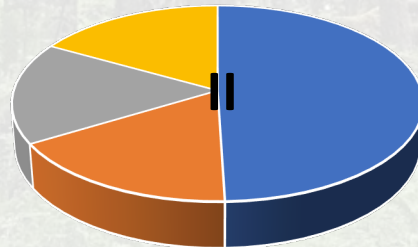
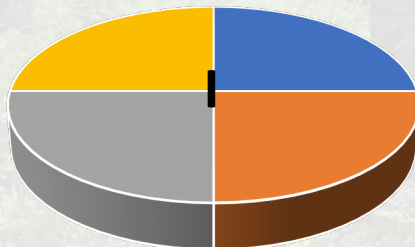
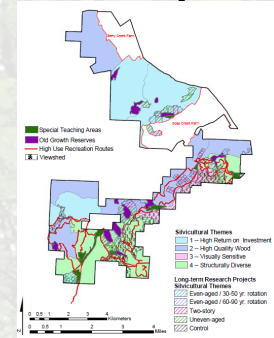
Provide opportunities to conduct innovative research on emerging issues. The McDonald-Dunn Research Forest will create opportunities to conduct research on the role that managed forests can play in the production of and trade-off between a wide variety of ecosystem services, from the genetic to the ecosystem to the social scale.

Utilize creative approaches to monitor trends over time. Inventory and monitoring efforts will seek to incorporate opportunities to pair traditional inventory and monitoring approaches with emerging technology to ensure accuracy and cost-efficiency, while also creating opportunities for research and education.

Foster public awareness and understanding of sustainable forest management. Interpretation of management and research actions, coupled with outreach on the McDonald-Dunn Research Forest, will seek to promote broader understanding and awareness of the role of actively managed forests to produce and support resilient ecosystems, forest products, and healthy communities.

Defining 'Management Regimes' and 'Scenarios'

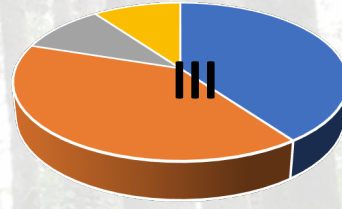
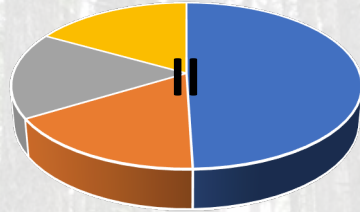
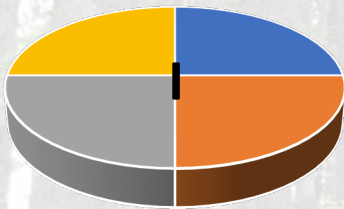
- The 2005 Plan had 4 'themes', intended to represent landowner objectives
 - Short rotation; high return on investment
 - Long rotation; high quality wood
 - Two-story; visually sensitive
 - Multi-aged; structurally diverse
- We're now tentatively calling these 'management regimes'
- Example scenarios reflect varying proportions of management regimes:



- Each management regime provides slightly different ecosystem services
- A comparison of scenarios will enable evaluation of tradeoffs

Evaluating 'Scenarios'

- Example scenarios reflect varying proportions of management regimes:



- Example of what an assessment of relative tradeoffs among scenarios might look like:

Value	Scenario I	Scenario II	Scenario III
Biodiversity	Low	High	Moderate
Carbon storage	Moderate	High	Moderate
Revenue	High	Low	Moderate

Recurring topics raised during past 6 months

- *Carbon sequestration*
- *Climate resiliency*
- *Conservation of at-risk species*
- *Invasive species*
- *Outreach/community engagement*
- *Recreation*
- *Restoration*
- *Traditional Ecological Knowledge*
- *Wildfire*
- *WUI*

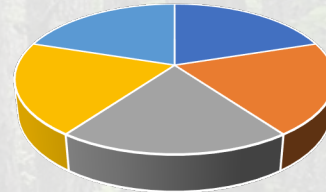
Brought to light by the SAC, FPC, CLS, and written public input

Potential New 'Management Regimes'

Recurring topics to be addressed in the new plan:

Carbon sequestration, Climate resiliency, Conservation of at-risk species, Invasive species, Outreach/community engagement, Recreation, Restoration, Traditional Ecological Knowledge, Wildfire, WUI

-
- A. Even-aged, short rotation**
 - B. Even-aged, long rotation**
 - C. Multi-aged/Multi-species**
 - D. Mature**
 - E. Restoration**



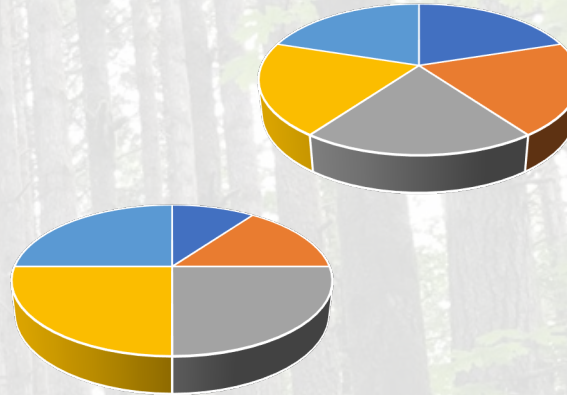
Discussion on the suitability of these 5?

Discussion on the proportions of each?



Potential scenarios, AKA proportions of 'management regimes'

- A. Even-aged, short rotation
- B. Even-aged, long rotation
- C. Multi-aged/Multi-species
- D. Mature
- E. Restoration

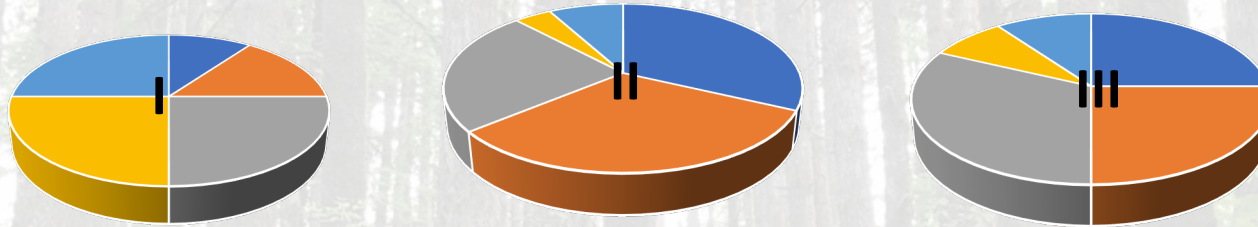


Proportion	Scenario I*	Scenario II	Scenario III
Even-aged, short rotation	~28%		
Even-aged, long rotation	~28%		
Multi-aged/multi-species	~22%		
Mature	~4%		
Restoration	~6%		
Untouchable (Long term research/teaching)	~12%		

*An example of what a scenario might look like

What values to assess when evaluating scenarios

- Example scenarios reflect varying proportions of management regimes:



- A. Even-aged, short rotation
- B. Even-aged, long rotation
- C. Multi-aged/Multi-species
- D. Mature
- E. Restoration

Value	Scenario I	Scenario II	Scenario III
Biodiversity?			
Carbon storage?			
Revenue?			
?			
?			

Components of the 2005 Plan

2005 Plan	
• Summary	
• Introduction and Description	
I. Location	
II. History	
III. Geology, Soils, & Hydrology	
IV. Current Forest Condition	
• Forest Goals	
• Approach	
I. Decision Process	
II. Themes	
III. Forest Zones	
• Management of Special Areas and Issues	
I. Habitats of Sensitive Species	
II. Mature & Old Growth Areas (Reserves)	
III. Native Grasslands, Oak Savanna & Oak Woodland	
IV. Dedicated Teaching Areas	
V. Long-term Research Projects	
VI. Research, Teaching, & Demonstration Projects	
VII. Snags & Down Wood	
VIII. Riparian Areas	
IX. Oak Creek Watershed	
X. Identification & Management of Sensitive Species	
XI. Landscape Level Diversity	
XII. Invasive Plants	
XIII. Recreational Use	
XIV. Visual Resource Management	
XV. Hardwood Levels	
XVI. Cultural Resources	
• Management Emphases, Inventory, Harvest & Growth	
I. Timber Harvest Schedule	
II. Future Forest Condition: Growth & Yield	
• Plan Implementation	
I. Communication	
II. Plan Review & Revision	
III. Adaptive Management/Continuous Improvement	
IV. Performance & Sustainability Indicators	
• Literature Cited	
• Appendices	

The site

Goals

The planning process; the pre-eminence of the 'themes' and 'zones'

Everything not affected by the themes and zones

Timber harvest; sustainability

Implementation; accountability; adaptability

2005 Plan
• Summary
• Introduction and Description
I. Location
II. History
III. Geology, Soils, & Hydrology
IV. Current Forest Condition
• Forest Goals
• Approach
I. Decision Process
II. Themes
III. Forest Zones
• Management of Special Areas and Issues
I. Habitats of Sensitive Species
II. Mature & Old Growth Areas (Reserves)
III. Native Grasslands, Oak Savanna & Oak Woodland
IV. Dedicated Teaching Areas
V. Long-term Research Projects
VI. Research, Teaching, & Demonstration Projects
VII. Snags & Down Wood
VIII. Riparian Areas
IX. Oak Creek Watershed
X. Identification & Management of Sensitive Species
XI. Landscape Level Diversity
XII. Invasive Plants
XIII. Recreational Use
XIV. Visual Resource Management
XV. Hardwood Levels
XVI. Cultural Resources
• Management Emphases, Inventory, Harvest & Growth
I. Timber Harvest Schedule
II. Future Forest Condition: Growth & Yield
• Plan Implementation
I. Communication
II. Plan Review & Revision
III. Adaptive Management/Continuous Improvement
IV. Performance & Sustainability Indicators
• Literature Cited
• Appendices

New Plan
• Executive Summary
• Introductory Context
I. Brief Overview of Recent History of the McDonald-Dunn Forest (1993 plan; 2005 plan; suspension; resumption)
II. Development of Vision, Mission, Goals for College of Forestry Research Forests in 2020
III. Development of McDonald-Dunn Research Forest Plan in 2022-2023
• Site Description
I. Location
II. Biophysical Conditions
III. History: Ownership, Land Use
IV. Cultural Resources
V. Zoning, Regulations
VI. Current Forest Conditions
• New Management Paradigms
I. Prioritization of Opportunities for Research, Teaching, & Demonstration
a. Long-term Research Projects
b. Dedicated Teaching Areas
c. Research, Teaching, & Demonstration Projects
II. Forest Management Regimes that Create Learning Opportunities & Ensure Financial Sustainability
a. Five Management Regimes
b. Timber Harvest Schedule
c. Future Forest Condition: Growth & Yield
III. Incorporation of Native American Perspectives
a. TBD
IV. Maintaining Biodiversity
a. At-risk Plants & Wildlife
b. Management of Wildlife Habitat
c. Management of Aquatic resources
d. Management of Vegetation Communities of Concern
e. Management of Legacy Trees, Snags, & Down Wood
V. Managing Threats to Forest Health
a. Climate Change
b. Invasive Species
c. Wildfire
d. Insects & Disease
e. Development
f. Vandalism
VI. Nurturing Human Dimensions
a. Recreation
b. Cultural Heritage
VII. Enhancing Community Engagement
a. Citizen Science
b. Communication Strategy
• Plan Implementation
I. Roles - Research Forest Staff, Forest Executive Committee, Dean
II. Annual Reporting
III. Adaptive Management/Continuous Improvement
IV. Performance & Sustainability Indicators
• Literature Cited
• Appendices

The context

The site

Draft Components of New Plan: for consideration and discussion

The core

Implementation;
accountability;
adaptability

Next Steps

- Complete the scheduling poll so we can get meetings of the FPC on calendars for winter term
- Finalize the Overarching Principles document so it can be shared with the SAC