

Recreation Five-year Action Plan

Now that the [Conditional Use Permit application](#) to Benton County Planning Commission has been approved, it's time to start thinking about what comes next. This article is devoted to explaining the five-year action plan for our recreation program, where it came from, and how we plan to get it done.

A note about the timelines in this document—they represent what we WANT to accomplish, but are not set in stone. In other words, the dates are tentative, and are dependent on a lot of things like resources available and issues/roadblocks that might arise in the process. The amount of work we can take on is limited by the staffing and resources we have, and we will only be able to work on the projects approved by the Benton County Planning Commission through the CUP, described here. Projects not approved through the recent 2017 CUP process will need to wait until the next application process, likely in 3-5 years.

Maps and timelines are displayed in this document; click on each to see a more detailed version.

Where did the Five-year action plan come from?

In 2013-2014, extensive community engagement resulted in recommendations ([Gustavson, Brown, & Olsen, 2014](#)) from the visiting public regarding the desired future direction of the Recreation and Engagement Program. In 2015, working groups identified many potential trail developments on the McDonald Forest, which has guided trail development and set the stage for future trail planning.

Concurrently in 2015, faculty and staff from the College of Forestry and the Research Forests developed a set of goals and objectives for the future of the Recreation and Engagement Program ([OSU College of Forestry, 2015](#)).

The Five-year Action Plan is derived from these efforts and represents years of work by community members and College of Forestry staff.

While we don't have a lot of flexibility on projects in our 5-year action plan at this point, we do have

flexibility in our next planning phase (3-10 years) and welcome your input. Please [contact us](#) with feedback and ideas for where we should go next!

Trail Construction

Our wonderful volunteers will be involved in all of the projects described below, so keep your eyes open for trail building event announcements!

Lewisburg Saddle to Peavy Arboretum: A grant from Oregon Parks and Recreation Department will fund the Northwest Youth Corps to finish up Dave's Trail by October of 2019. This will complete the single track trail connection between Lewisburg Saddle and Peavy Arboretum.

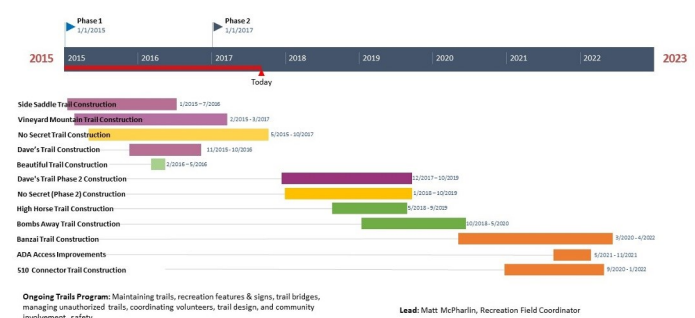
Further work currently scheduled for 2020-2022 plans to reroute and extend the Banzai Trail, and complete a connector trail along the 510 Road to allow mountain bikes and horses to complete the journey from Lewisburg Saddle to Peavy Arboretum without traveling on major forest roads.

In this same timeframe, additional work at Cronemiller Lake and Peavy Arboretum will make trails more accessible for people with disabilities.

Lewisburg Saddle to Dimple Hill: Starting in 2018, High Horse and Bombs Away unauthorized trails will be re-designed, re-constructed in some areas, and brought onto the system of officially managed trails. This work will be completed through help from all of our wonderful community volunteers. These trails will finish the trail connection between Lewisburg Saddle and Dimple Hill.

Click graph for a larger view!

Note: Bar colors correspond to trails on maps (next page).

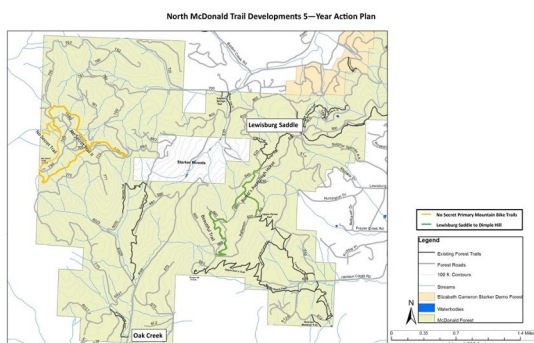
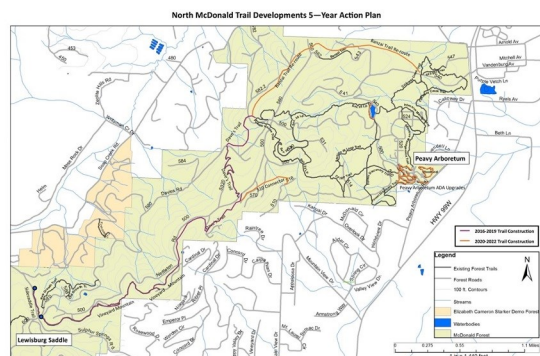


Recreation Five-year Action Plan

Trail Construction (cont.) *No Secret Primary Use Mountain Bike Trail:* In partnership with Team Dirt, work will continue on expanding the primary use mountain bike system near McCullough Peak starting early in 2018.

Click maps for a larger view!

Note: Trail colors correspond to bars on graph (page 1).



Phase III Trail Projects (2022 and beyond)

Over the next several years, we plan to continue our trails planning effort to identify trails for construction in the western portion of the McDonald Forest (Oak Creek and the 700 Road system), as well as within the Elizabeth Starker Cameron Demonstration Forest. Aside from one trail connecting Gates 100 and 200, we are not planning on developing trails in the Dunn Forest, as that area was identified in public involvement efforts to remain "remote."

Parking Development

Lewisburg Saddle: The same grant from Oregon Parks and Recreation Department is funding the

development of approximately 14 additional parking spaces to the north of current parking at Lewisburg Saddle. Additionally, it will fund some simple improvements for safety at the trailer pullout down the road, and the installation of a permanent vault toilet at the main parking area. Intentions with these improvements are to improve safety and conservatively increase capacity.

Oak Creek: As mitigation for the Conditional Use Permit, several improvements at Oak Creek include installing bollards along the shoulder of NW Oak Creek Drive (with accompanying signage, education and enforcement) to prohibit parking occurring within the white lines. Additional improvements will include the installation of a webcam to provide real-time information of parking availability. Safety improvements at the parking area will clarify traffic flow, and will include the addition of a turn-around area, repaving/grading, and clear delineation of parking spaces and 'no parking' areas.

540/Calloway Creek: To address concerns with access for administrative traffic and emergency services, parking will be clarified at the 540 gate. The parking area will be re-graded, and 'no parking' areas will be clearly identified. This will not result in an increase in available parking, and this location will continue to serve primarily as a walk-in site for residents of Adair Village.

Alternative Transportation Strategy: As part of the mitigation for the Conditional Use Permit, OSU Research Forests will be developing a strategy to reduce traffic and congestion on Forest access roads and at trailheads. This could include any number of measures, including webcams, transit service, parking fees, required carpooling, public information campaign, etc. We will be pulling together a team of community members, neighbors and organizations to help us develop this strategy. If you have good ideas on how to reduce vehicular traffic to the forest, please [contact us](#) with your thoughts!

Recreation Five-year Action Plan

Parking Development (cont.) Other Parking-Related Improvements: Also included as mitigation for the Conditional Use Permit, we will be posting signs with contact information for the public to use in reporting issues and concerns, as well as installing bike racks at both Lewisburg Saddle and Oak Creek.

Click graph for a larger view!



Ongoing Trailhead and Parking Program: Maintaining trailhead kiosks, update signs, address site-specific issues, parking restrictions

Planning lead: Ryan Brown, Recreation and Engagement Program Manager

Phase III Projects: During this process, it has become very clear that the McDonald Forest is limited by topography, environmental concerns, consideration for neighbors and other factors in providing large amounts of parking for visitors. It is likely that supply of parking will never be able to fully meet the demand for parking on the Forest itself. Creative solutions will need to be explored and implemented to address issues with congestion and to allow people to access the Forest easily.

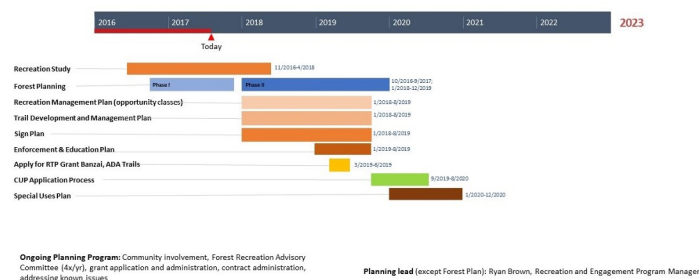
Potential parking expansion at Oak Creek and other locations will be informed by monitoring the situation over the next several years. Possible developments would be included in the next round of CUP planning.

Forest and Recreation Planning

While not required for inclusion in the CUP application, the timeline for future planning efforts is shown here for reference. Of note is the planning timeline for developing a Forest Plan (including harvest schedules), and the formalization of focused recreation plans. A survey of visitor characteristics and preferences will have results to share in 2018. In the future, we plan to continue applying for grants to fund our projects, and we plan to apply for

another Conditional Use Permit with Benton County again as our next set of projects crystalize.

Click graph for a larger view!



Ongoing Planning Program: Community involvement, Forest Recreation Advisory Committee (14x/yr), grant application and administration, contract administration, addressing known issues

Planning lead (except Forest Plan): Ryan Brown, Recreation and Engagement Program Manager

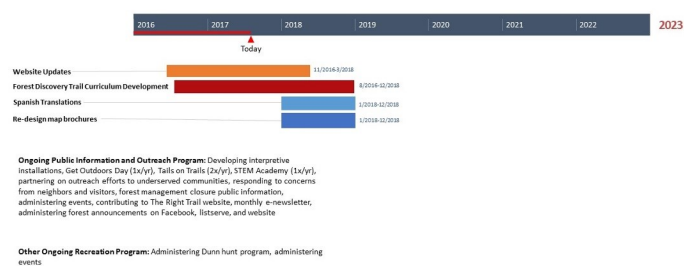
Public Information and Outreach

OSU Research Forests plan to continue to improve and administer our system for notifying visitors and neighbors about forest activities and closures using our website, e-newsletter, Facebook page, and on-site messaging. In addition, we plan to upgrade our website, including the addition of an interactive closure map.

We plan to continue our engagement program, including developing interpretive and educational installations, hosting outreach events and educational programs, partnering on outreach efforts to underserved communities, responding to concerns from neighbors and visitors, and issuing a monthly e-newsletter, among others.

Other Recreation Programs: Last but not least, the recreation program also plans to continue administering several hunts on the Dunn Forest for walk-in access, as well as administering events occurring on the OSU Research Forests.

Click graph for a larger view!



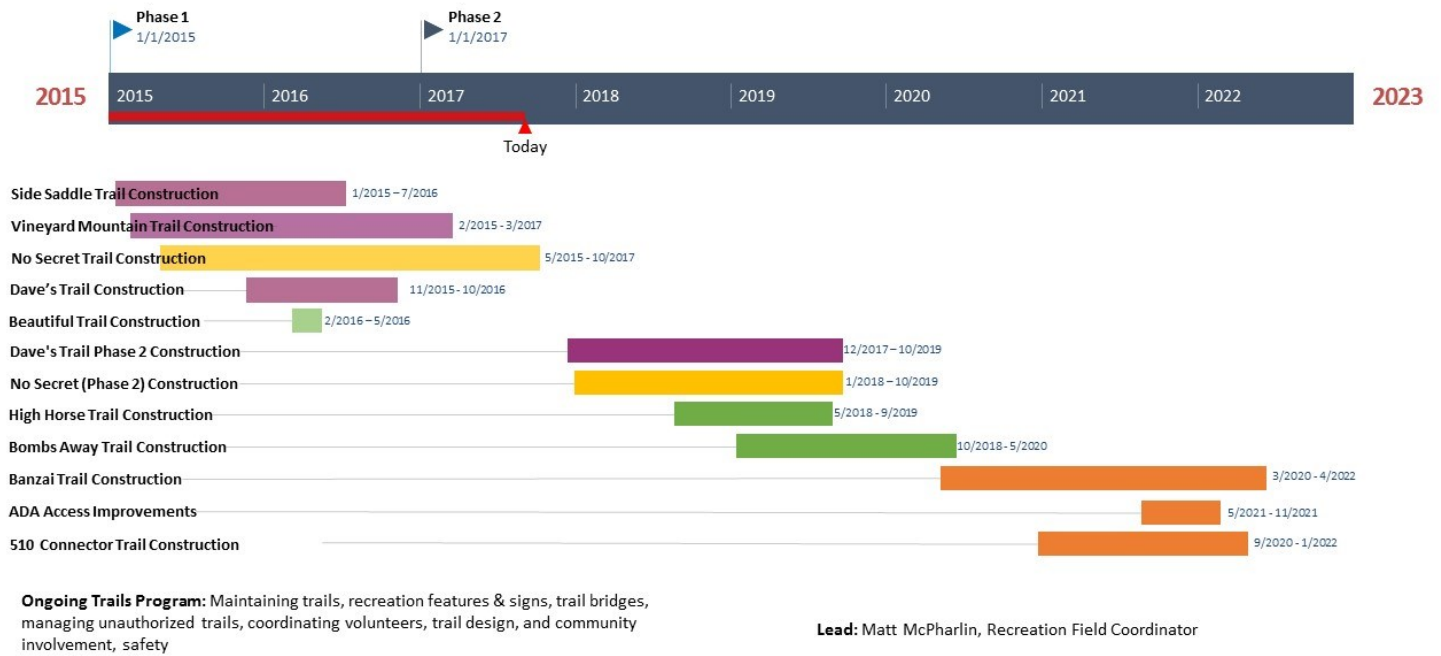
Ongoing Public Information and Outreach Program: Developing interpretive installations, Get Outdoors Day (1x/yr), Trails on Trails (2x/yr), STEM Academy (1x/yr), partnering on outreach efforts to underserved communities, responding to concerns from neighbors and visitors, forest management closure public information, administering events, contributing to The Right Trail website, monthly e-newsletter, administering forest announcements on Facebook, listserve, and website

Other Ongoing Recreation Program: Administering Dunn hunt program, administering events

Lead: Ryan Brown, Recreation and Engagement Program Manager

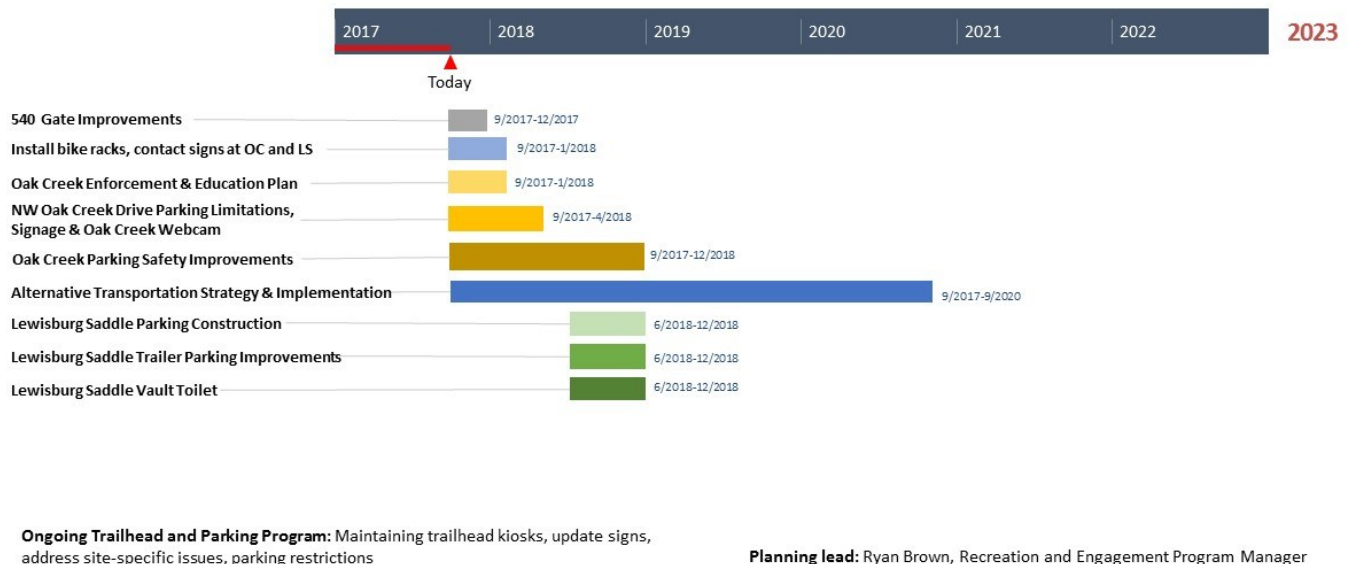


OSU Research Forest Trail Construction Timeline



Timeline for trail construction projects on the McDonald Forests over the next five years. Note that colors of bars line up with trail colors on maps (previous page). ([Click here to enlarge](#))

OSU Research Forest Parking & Trailhead Timeline



Timeline for parking lot developments on the OSU Research Forests over the next five years. ([Click here to enlarge](#))

OSU Research Forest Planning Timeline



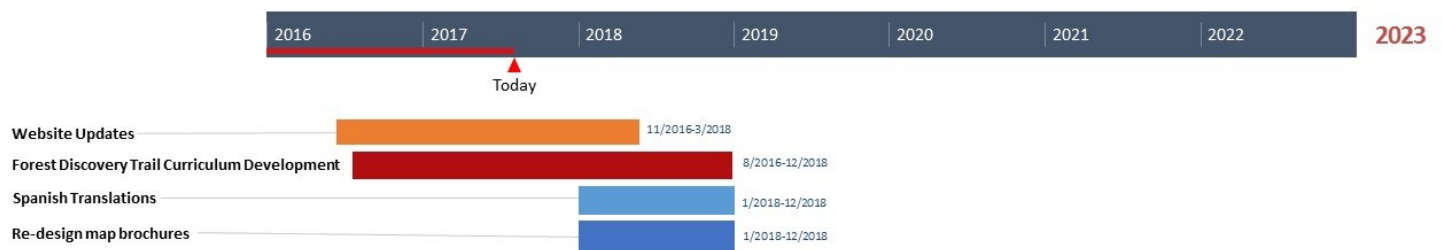
Ongoing Planning Program: Community involvement, Forest Recreation Advisory Committee (4x/yr), grant application and administration, contract administration, addressing known issues

Planning lead (except Forest Plan): Ryan Brown, Recreation and Engagement Program Manager

Timeline for trail Forest and recreation planning projects on the OSU Research Forests over the next five years.

[\(Click here to enlarge\)](#)

OSU Research Forest Public Information & Outreach Timeline



Ongoing Public Information and Outreach Program: Developing interpretive installations, Get Outdoors Day (1x/yr), Trails on Trails (2x/yr), STEM Academy (1x/yr), partnering on outreach efforts to underserved communities, responding to concerns from neighbors and visitors, forest management closure public information, administering events, contributing to The Right Trail website, monthly e-newsletter, administering forest announcements on Facebook, listserve, and website

Other Ongoing Recreation Program: Administering Dunn hunt program, administering events

Lead: Ryan Brown, Recreation and Engagement Program Manager

Timeline for public information and outreach projects on the OSU Research Forests over the next five years.

[\(Click here to enlarge\)](#)