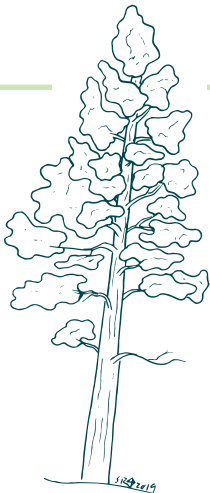


TREE SCAVENGER HUNT

Round ‘the shelter’ we stand in a ring,
Nine trees to honor the memory
Of the nine Oregon firefighters who lost their lives,
Fighting Colorado’s ‘94 South Canyon Fire.

Who are we? _____

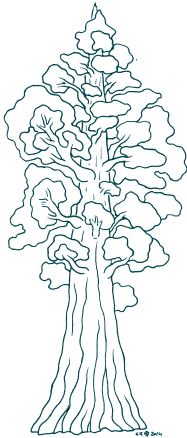


A

Did you know? Our thick bark protects us from frequent fires in our native habitat.

I have prickly needles that tickle the sky,
And a red, flaky trunk that grows quite wide,
Up to thirty feet in diameter, I’m big as can be!
Few other trees are as wide as me.

Who am I? _____



B1

Did you know? My home state, California,
named a national park after me!

My needles lay flat, they don’t prickle or poke,
And my bark doesn’t peel like a badly frayed rope,
Compared to my neighbor, I’m not very wide,
But I might grow to be the tallest tree alive.

Who am I? _____

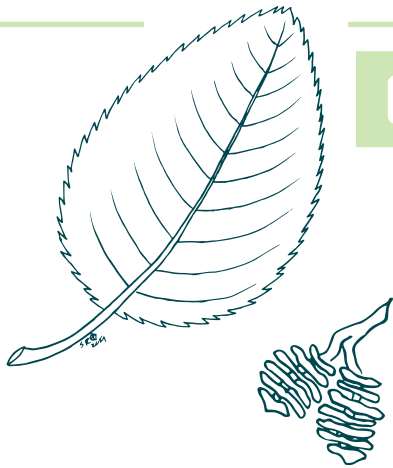


B2

Did you know? Someday, I might grow to be over 250’ tall!

Near the pond I like to stand,
With microbes I grow hand in hand,
I boast broad leaf and tiny cone,
My bark is gray like dusty bone.

Who am I? _____

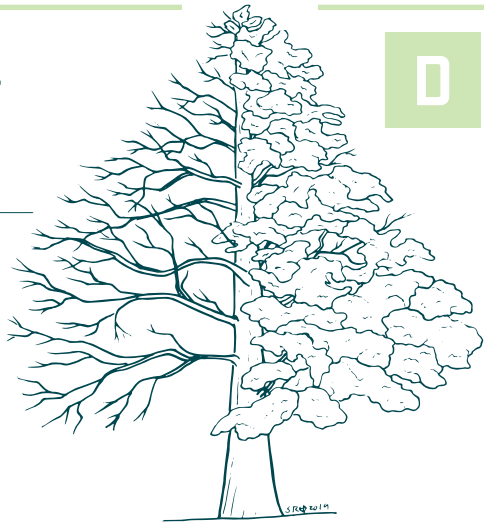


C

Did you know? My roots are home for tiny organisms that can add nitrogen to the soil
and help other plants grow.

Before ‘the Lodge’ we two stand sentry,
Proud, straight conifers with height aplenty,
And yet in Fall our needles drop.
Are we evergreen trees or not?

Who are we? _____



D

Did you know? Some call us living fossils. Previously considered extinct, Chinese
botanist Jinshuang Ma discovered our species alive and well in 1946. Dean of
Forestry, Paul N. Dunn planted us here in 1949.

My friends and I are old and wise,
We spread gnarled branches toward the sky,
Wandering beneath us, search the ground,
Where hundreds of fallen acorns are found.

Who are we? _____

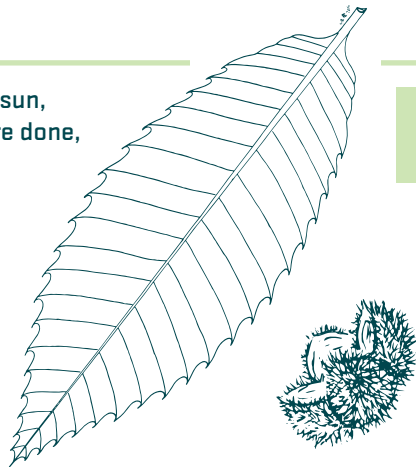


E

Did you know? We once ruled the landscape. The Kalapuya used fire to keep other
plants and trees from taking over, allowing us to grow big, wide branches.

I have long pointy leaves that dance in the sun,
I grow green, fuzzy fruits, and when they are done,
They break open! And what do they boast?
Tasty brown nuts that are ready to roast.

Who am I? _____

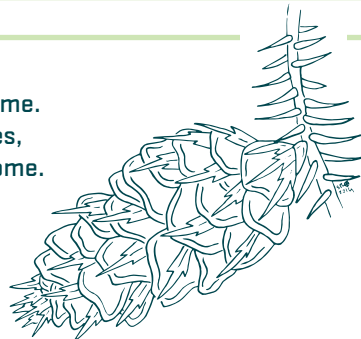


F

Did you know? I once dominated the eastern North America, until a deadly fungus
killed most of my species. Now, over a century later, I am a rare tree indeed!

A true Oregonian, I am the state tree!
The timber economy certainly depends on me.
You can tell me apart by my unique fir cones,
The ones with little mice tails, diving for home.

Who am I? _____



G

Did you know? I’m not really a true fir. My scientific name, Pseudotsuga, translates to
false-hemlock.

Purple-red, scaly bark,
Decorates my trunk in a work of art.
I came here from across the sea,
Do you think you can find me?

Who am I? _____



H

Did you know? Groups of needles can you help identify certain trees. But we can be
tricky, like how I have two needles per cluster but three-clustered needles cover the
ground below me. (They’re my neighbor’s. He sheds.)

- A. Ponderosa pine (Pinus ponderosa)
- B1. Giant sequoia (Sequoiadendron giganteum)
- B2. Redwood (Sequoia sempervirens)
- C. Alder (Alnus)
- D. Dawn redwood (Metasequoia glyptostroboides)
- E. Oregon white oak (Quercus garryana)
- F. American chestnut (Castanea dentata)
- G. Douglas-fir (Pseudotsuga menziesii)
- H. Maritime pine (Pinus pinaster)

TREES “ANSWER” LIST

Welcome to Peavy Arboretum!

Welcome to Peavy Arboretum!
Here you'll find more than just a collection of rare and native trees. Look closely and you'll find the forest is full of secrets!

Use this brochure to explore Peavy Arboretum and uncover the mysteries of nine tree species (six in the Inner Loop and three in the Extended Loop).
What can you learn from the leaves and cones found on trees? In Fall and Winter where else might you look for clues?

Look up! Look down! Clues can be found all around! Some might even be hidden within these pages.

Good luck explorers!



Things to Remember

- Stay safe! Keep your eyes open at road crossings.
- Please practice Leave No Trace; leave flowers and plants for others to learn from and enjoy!
- (Visit LNT.org to learn more)
- Learn more about the Research Forests, including rules and regulations at our trailhead kiosks.

GET CONNECTED

- Email sign-ups
- Facebook
- Volunteer
- Donate to support trails

<http://cf.forestry.oregonstate.edu/more-information>



CONTACT US

The OSU Research Forests
<http://cf.forestry.oregonstate.edu>
541-737-4452

Special Thanks to

Sue Ranseen, illustrator of the beautiful leaves and trees included in this brochure.

www.sranseenart.com

PEAVY ARBORETUM
EXPLORATION TOUR



DISCOVER SECRETS OF THE
TREES

Look inside for a tree scavenger hunt!

OSU Research Forests 2018
cf.forestry.oregonstate.edu
541-737-4452

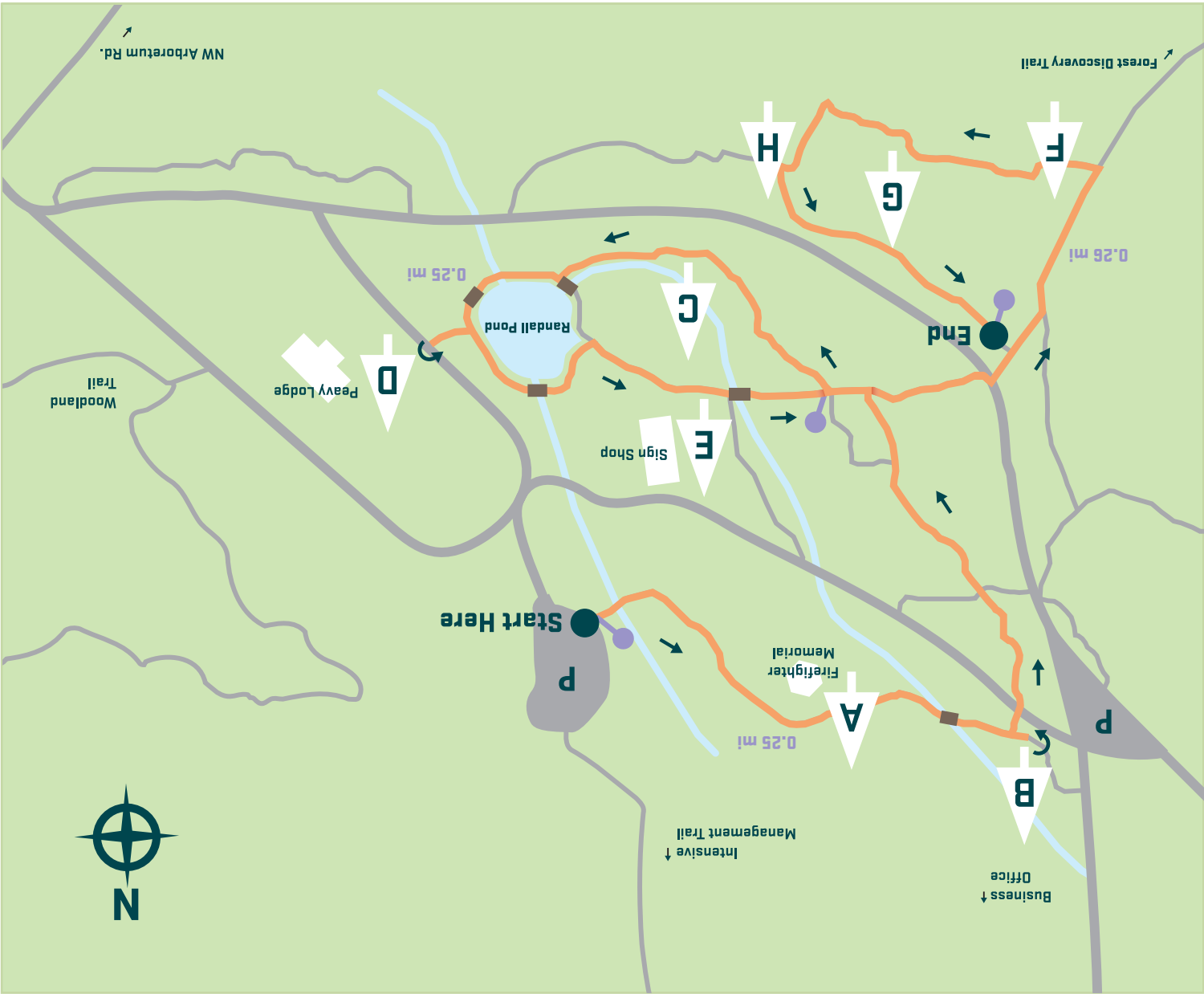


Follow this
symbol along the
Peavy Arboretum
Exploration Trail.



Legend

- Tour Route (1.33 Miles)
- Roads
- Other Trails
- Distance Pins
- Scavenger Hunt Tree
- Bridges
- Buildings
- Direction Markers
- Ponds
- Parking Lots



ARBORETUM TOUR MAP