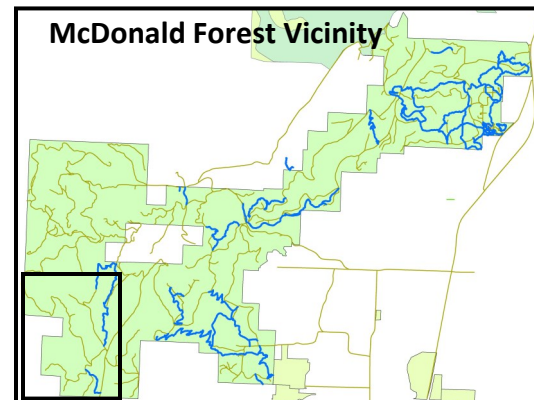
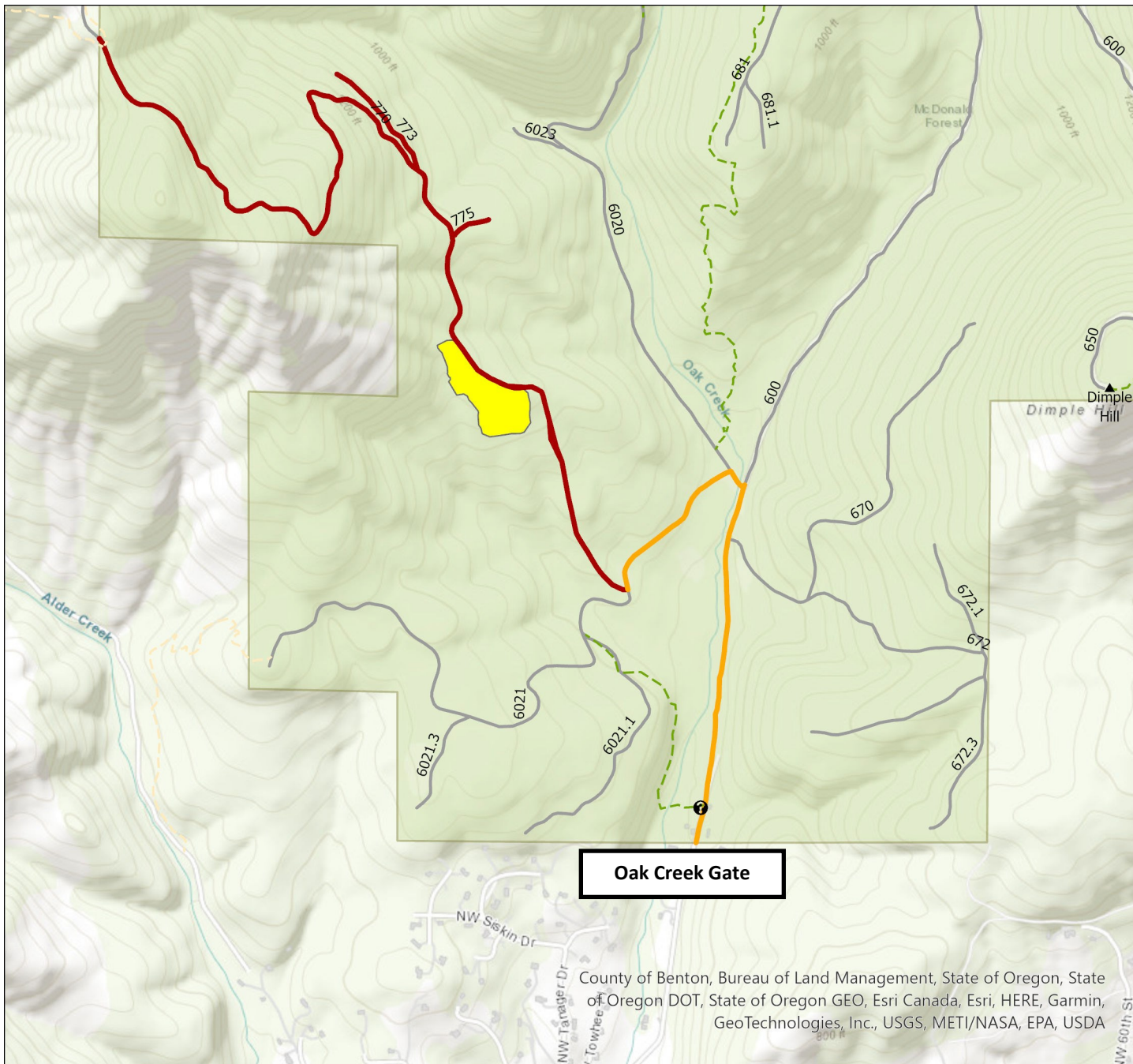


Public Closure Starting 5/27/2022

Closures in effect 7 days a week, 24 hours a day



Forest closures are actively enforced by Benton County Sheriff's Office. Harvest operations are extremely dangerous—please respect posted forest closures for your safety and the safety of the harvest crews.



Legend

- Harvest Closures
- Closed Routes
- Haul Routes
- Forest Roads
- Forest Trails
- Forest Trails
- Forest Boundary
- Kiosks

Bugs Life Harvest Information

Approximate Closure Duration: 1 month

Closed Roads: Portions of 770 Road, all of the 773 & 775 roads

Closed Trails: None

Haul Route: 6021, 600 to Oak Creek Gate

Detours: None

Size: 7.6 acres

Harvest Method: Ground based harvesting

Prescription: Clear-cut with structural and visual tree retention. Retain legacy oaks, some conifer snags and some green healthy conifer trees.

Reason for Harvest: Very high degree of mortality caused by ice damage and drought. Return the site to a more open oak and pine ecological condition.

Stand Age: 64

Additional Considerations: Retain legacy oaks, some conifer snags and some green healthy conifer trees.

Consistent w/ Forest Plan? Yes, Exemption to forest plan approved.

Know about closures before you go!

Learn more about e-mail, Facebook and web updates:
<https://cf.forestry.oregonstate.edu/get-involved/get-news>

Contact us: (541) 737-4452

