

PEAVY'S GIANTS



Big things start small. Meet the Redwoods.

How old do you think this tree is?

These redwood trees were planted sometime around 1926, when this land was first purchased by the College of Forestry to create Peavy Arboretum: a botanical garden devoted to trees from all over the world. These trees are no older than 90 years old (in 2020). A redwood. A redwood can live for 2000 years. In proportion to a human lifespan of 80 years, these trees would only be 4 years old!

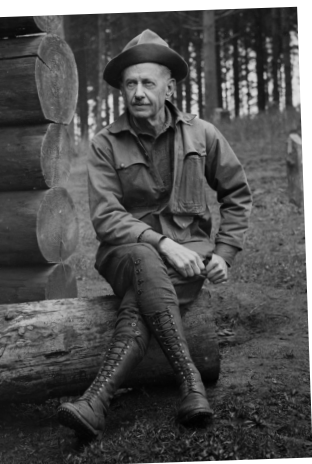
Do you know why it is called the "Peavy" Arboretum?

This arboretum is named after George Peavy. Dean of the School of Forestry from 1913-1940, President of OSU from 1934-1940 and mayor of Corvallis from 1947-1951.

George Peavy started with just an idea. He wanted his students to have a living

laboratory where they could learn about trees and forests. That little idea became the Peavy Arboretum and grew into the 7000 acres of the McDonald Forest!

**Let's have fun
and stay safe!**



Activity!

Can you find a cone?

Redwood cones are about the size of an olive! This is a very small cone and the seeds inside are even smaller!

Isn't it amazing that something so tiny has grown into one of the world's largest tree species?





Activity!

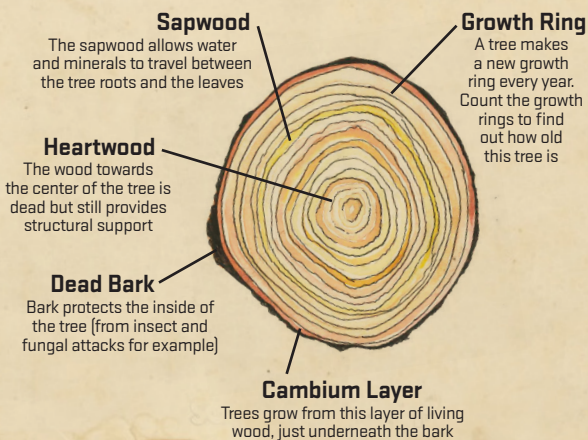
Can you find a redwood sapling?

These trees are just a little bit taller than you. These are baby redwoods!

Touch the Redwood's tree bark.

How does it feel?

Bark acts like the skin of the tree and protects the tree, just like our skin protects our insides! You can learn how old a tree is by counting the growth rings. The tree produces a new growth ring every year.



Activity!

How big do redwoods get?

Cross the forest road safely to the big grassy area. Have your whole group hold hands in a circle.

Approximately 15 -20 people holding hands in a circle simulates how wide the biggest redwoods are!



Follow the trail to the next stopping point



...THE DARK FOREST