

McDonald Research Forest

SEE OTHER SIDE
FOR DUNN FOREST MAP

----- HIKING/BIKING/HORSE TRAIL

----- PRIMARY USE MOUNTAIN BIKE TRAIL
(Open to hikers; no horses)

----- HIKING and SEASONAL BIKING TRAIL
(Open to bikes 4/15 to 10/31 only; no horses)

----- HIKING TRAIL
(No bikes or horses)

----- FUTURE TRAIL
(Anticipated opening date)

----- FOREST ROAD
(Closed to Unauthorized Motor Vehicles;
Open to HIKING/BIKING/HORSES)

----- ACCESS ROAD
Open to Motor Vehicles

----- TRAIL ON ROAD

Trailhead

P Parking

Designated ADA Parking

Information

Toilet

Horse Trailer Parking

Bicycle Rack

Dog Waste Station

Forest Office

Gate

A Forest Favorites
(See text upper right for descriptions)

Mature Forest

Viewpoint

0.1 mi Trail Distance (in miles)

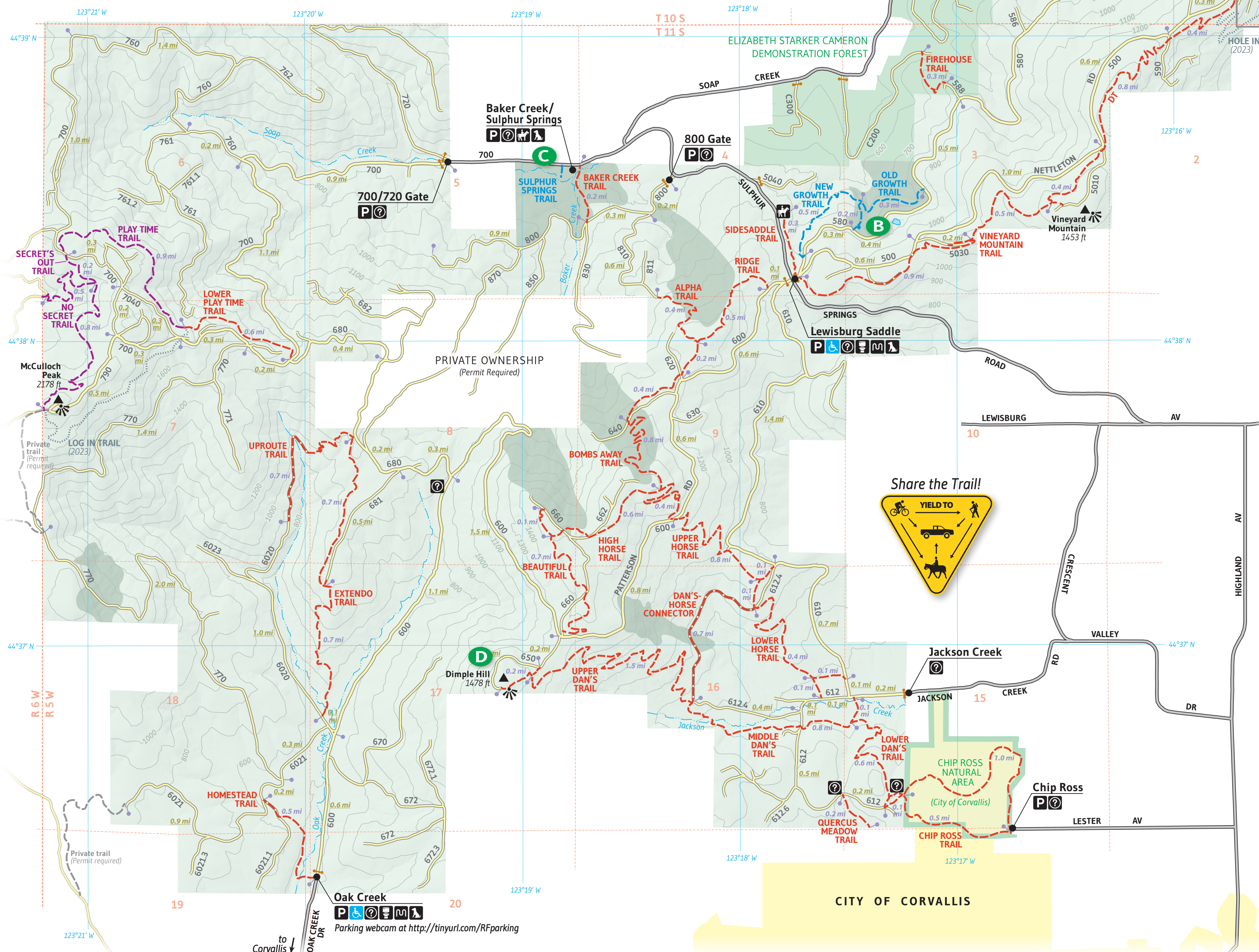
0.1 mi Road Distance (in miles)

700 Elevation Contour
(100 foot interval)

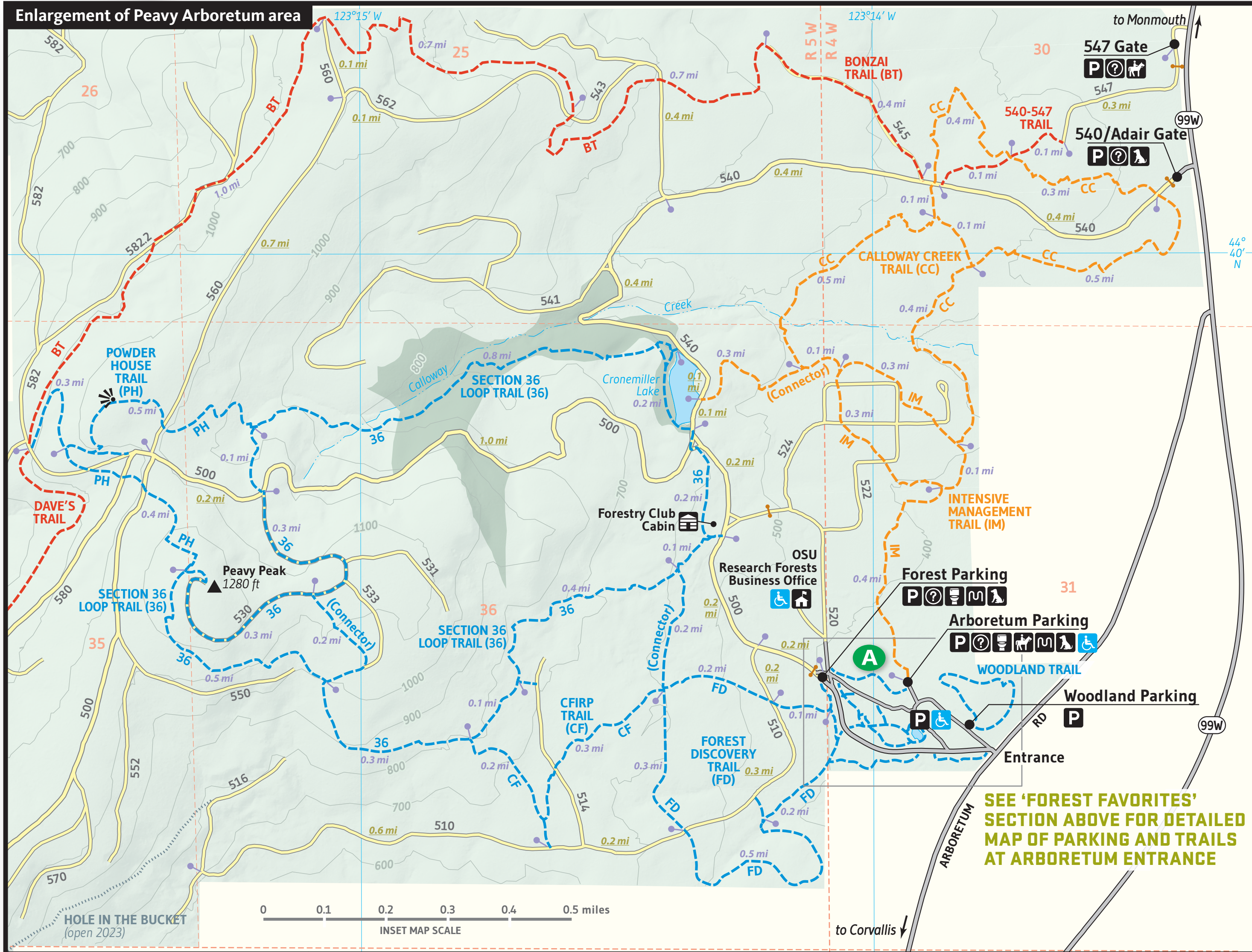
0 0.25 0.5 miles

MAIN MAP SCALE

NORTH



SEE MAP BELOW
FOR ENLARGEMENT
OF THIS AREA



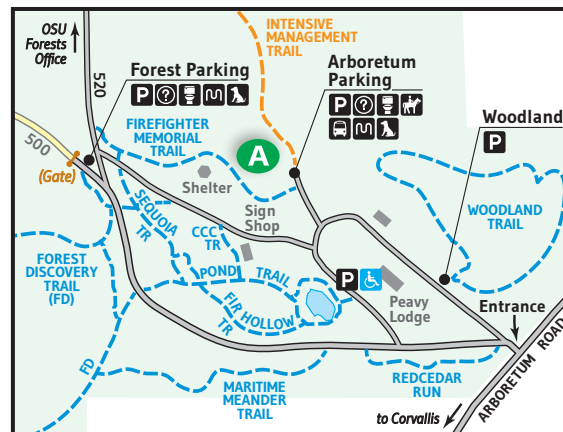
Welcome to the
Oregon State University
Research Forests!

Play and Learn in the Research Forests

The OSU College of Forestry is pleased to offer almost 35 miles of well-maintained trails and more than 100 miles of forest roads for the Corvallis community to use and enjoy. Forest staff, students, and volunteers work together to provide many services to visitors including maintenance of trails and directional signs as well as Peavy Arboretum and trailheads.

Forest Favorites

A Peavy Arboretum (maps below and at left) has an extensive collection of native and imported trees and shrubs. Bring the family for a stroll, a picnic, or to begin your own Forest Discovery Trail adventure.



B Old Growth and New Growth Trails
Experience two types of forests, one with towering trees and the other with trees planted in rows on these hiker-only trails near Lewisburg Saddle.

C Sulphur Springs is one of the earliest established recreation sites on the McDonald Forest. As early as the 1890s, visitors started coming to see the mineral springs.

D Dimple Hill provides breathtaking views of the surrounding valley and is accessed via Dan's Trail, which runs approximately three miles. Parking is located at Chip Ross Park.

McDONALD FOREST TRAILS

----- Hiking/Biking/Horse Trail

ALPHA	0.4 miles
BAKER CREEK	0.2 miles
BONZAI	1.0 miles
BEAUTIFUL	0.7 miles
BOMBS AWAY	1.2 miles
DAN'S HORSE CONNECTOR	0.7 miles
DAN'S TRAIL	3.1 miles
DAVE'S TRAIL	2.5 miles
EXTENDO	1.4 miles
FIREHOUSE (Cameron Forest)	0.28 miles
HIGH HORSE	0.9 miles
HOMESTEAD	0.5 miles
LOWER HORSE	0.5 miles
LOWER PLAY TIME	0.6 miles
QUERCUS MEADOW	0.2 miles
RIDGE	0.6 miles
SCOUT (Dunn Forest)	0.7 miles
SIDESADDLE	0.25 miles
UPPER HORSE	0.9 miles
UPROUTE	0.7 miles
VINEYARD MOUNTAIN	1.8 miles
540-547 CONNECTOR	0.2 miles
LOG IN (2023)	
HOLE IN THE BUCKET (2022)	

----- Primary Use Mountain Bike Trail
(Open to hikers; no horses)

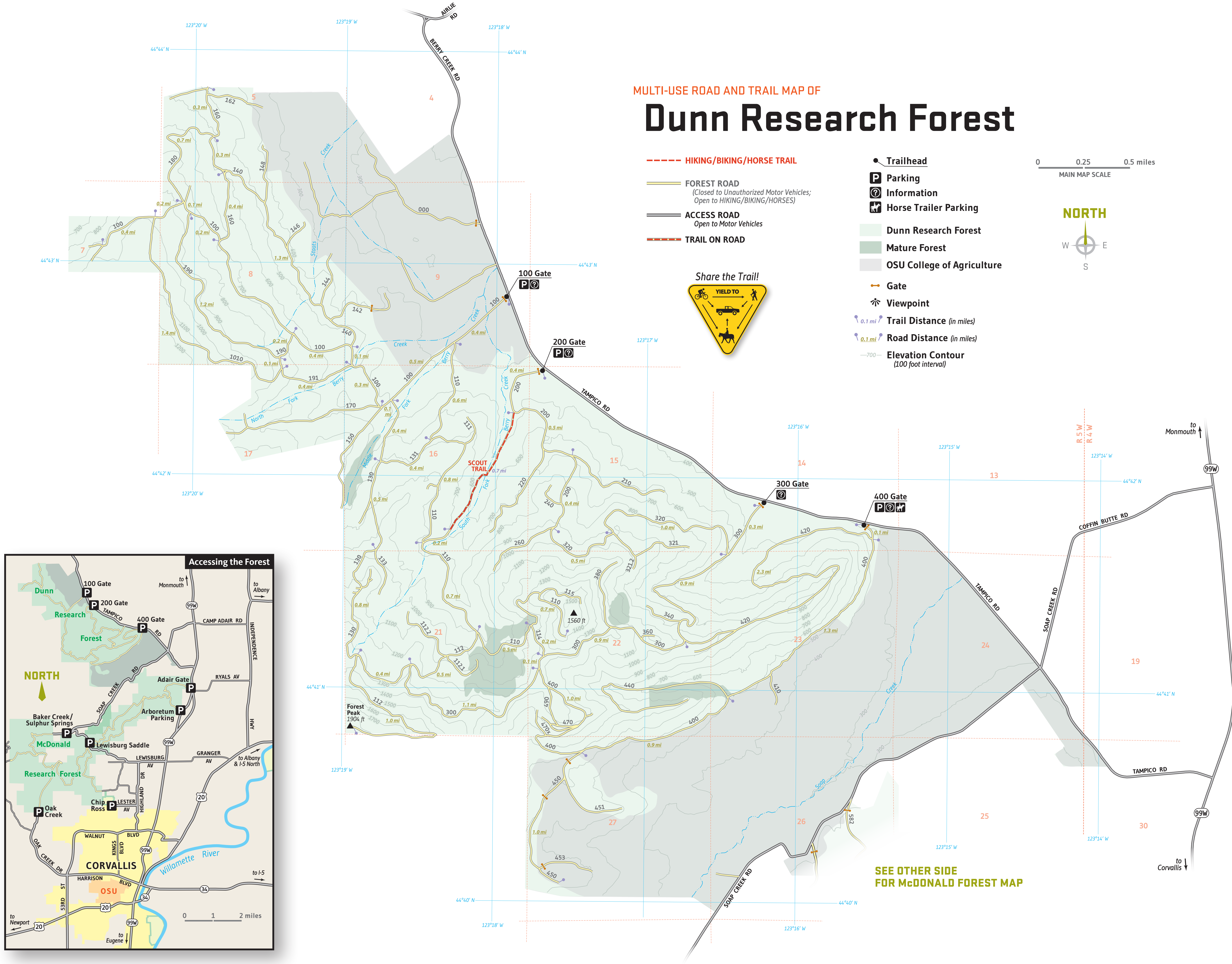
NO SECRET	1.3 miles
PLAY TIME	0.9 miles
SECRET'S OUT	0.2 miles

----- Hiking and Seasonal Biking Trail
(Open to bikes 4/15 to 10/31 only; no horses)

ALLOWAY CREEK	2.3 miles
INTENSIVE MANAGEMENT	1.1 miles

----- Hiking Trail
(No bikes or horses)

CFIRP	0.5 miles
FOREST DISCOVERY	1.3 miles
NEW GROWTH	0.5 miles
OLD GROWTH	0.5 miles
POWDER HOUSE	1.0 miles
SECTION 36 LOOP	3.3 miles
SULPHUR SPRINGS	0.1 miles
WOODLAND	0.4 miles
INTERIOR ARBORETUM TRAILS	0.9 miles combined



Welcome to the Oregon State University Research Forests!

The Oregon State University Research Forests consist of the **McDonald Forest**, the **Dunn Forest**, the **Elizabeth Cameron Starker Demonstration Forest**, and several other forests throughout Oregon. Within the McDonald Forest, you will pass through many forest types including oak woodlands, forest plantations, riparian areas, and mature forest reserves.

While the Forests may feel like a public park, they are actually **living laboratories**, actively managed by the OSU College of Forestry and dedicated to teaching, research, and demonstration. College of Forestry students and faculty use the Research Forests to find new ways of sustainably managing and growing Oregon forests for conservation, education, business, and recreation.

We welcome community members to enjoy our beautiful trails on foot, horseback, or non-motorized bicycle while learning about forest ecosystems and forest management.



McDonald, Dunn, and Cameron Research Forests

MULTI-USE ROAD AND TRAIL MAP



Guidelines & Information

- **Motor vehicle access** on Forest roads is by authorized vehicles only.
- The forest is **closed from 9pm to 5am**.
- For your safety, **follow all posted trail and road closures**. This is a working forest with an active forest management program.
- **Parking is limited**, so if you plan to meet a group at the trailhead, carpool instead.
- **Travel with caution** on forest roads. Logging trucks, authorized vehicles, and other visitors all share the same roads. **Vehicles have right of way**.
- McDonald Forest is **closed to hunting and target shooting**.
- **Protect research** by leaving research sites and markings undisturbed and by traveling only on authorized roads and trails.
- **No smoking, fireworks, campfires, barbecues, or open flame**.
- **No camping, swimming, fishing, firewood cutting, or consumption of marijuana or alcohol**.
- **Control pets** using voice control or leash. Clean up and carry out pet waste.

Trail Use in Wet Weather

Use of trails is not allowed when travel will result in leaving a track in the mud, or when there is significant standing water on the trail.* This is especially important for natural surface trails such as Dave's, Vineyard Mountain, Beautiful, Bombs Away, No Secret, and High Horse Trails. If trail damage occurs during winter months, seasonal restrictions will be implemented.

*Good wet weather alternatives: Dan's, Upper and Lower Horse, Extendo, Uproute, Ridge, and Alpha.

Be Part of the Solution!

Parking is limited, and trailheads can get congested. **Here's how you can help:**

- **Carpool** from a central location
- **Ride, run, or hike** to the Forest
- **Visit lower-use trailheads** or during quieter times

Drive slowly and carefully on your way to the Forest. Expect to see cars pulling out of driveways, wildlife, bikes, kids, horses, runners, and dogs at any time on these residential roads. Remember that we all share the Forest. Drive and park safely, only visit during open hours, keep dogs close to you or on a leash, and be friendly with your fellow visitors.

For **more information and tips** on how to get to the trailhead without your car, and to view a webcam of the Oak Creek Parking Area, visit <https://cf.forestry.oregonstate.edu/recreation/alternative-trailhead-transportation>

Get Connected

- Email sign-ups
- Facebook
- Volunteer
- Donate to support trails

<https://cf.forestry.oregonstate.edu/get-involved/get-news>

Contact us

The OSU Research Forests
<http://cf.forestry.oregonstate.edu>
541-737-4452

