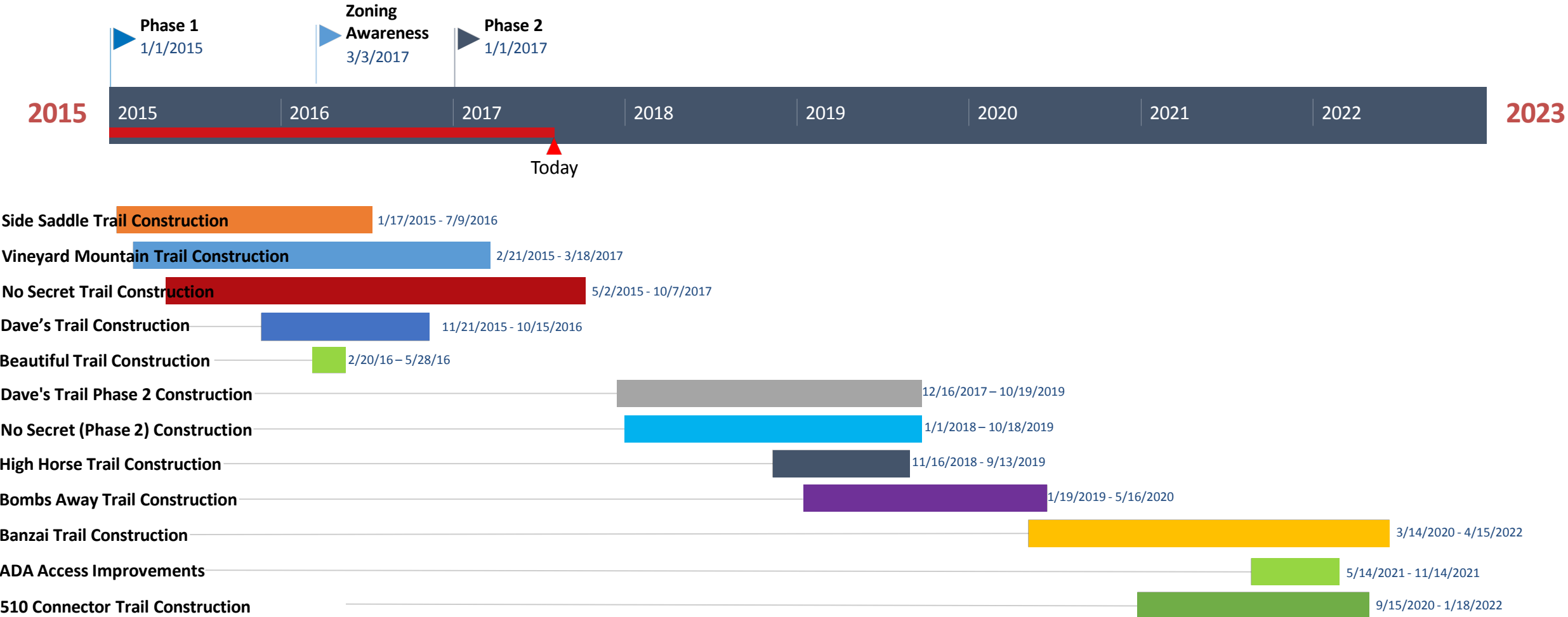


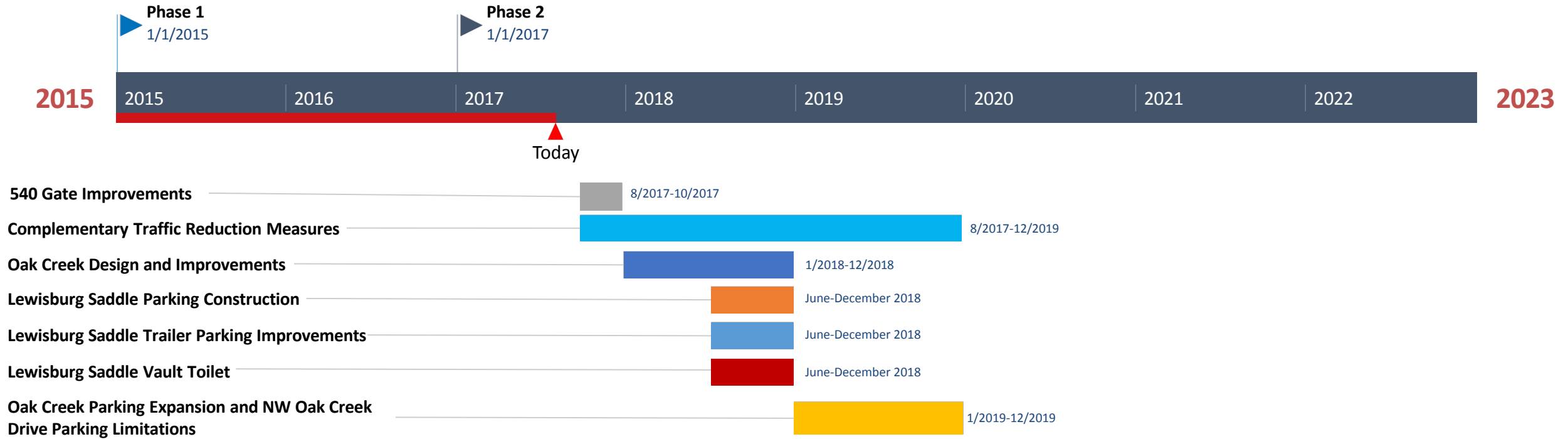
OSU Research Forest Trail Construction Timeline



Ongoing Trails Program: Maintaining trails, recreation features & signs, trail bridges, managing unauthorized trails, coordinating volunteers, trail design, and community involvement, safety

Lead: Matt McPharlin, Recreation Field Coordinator

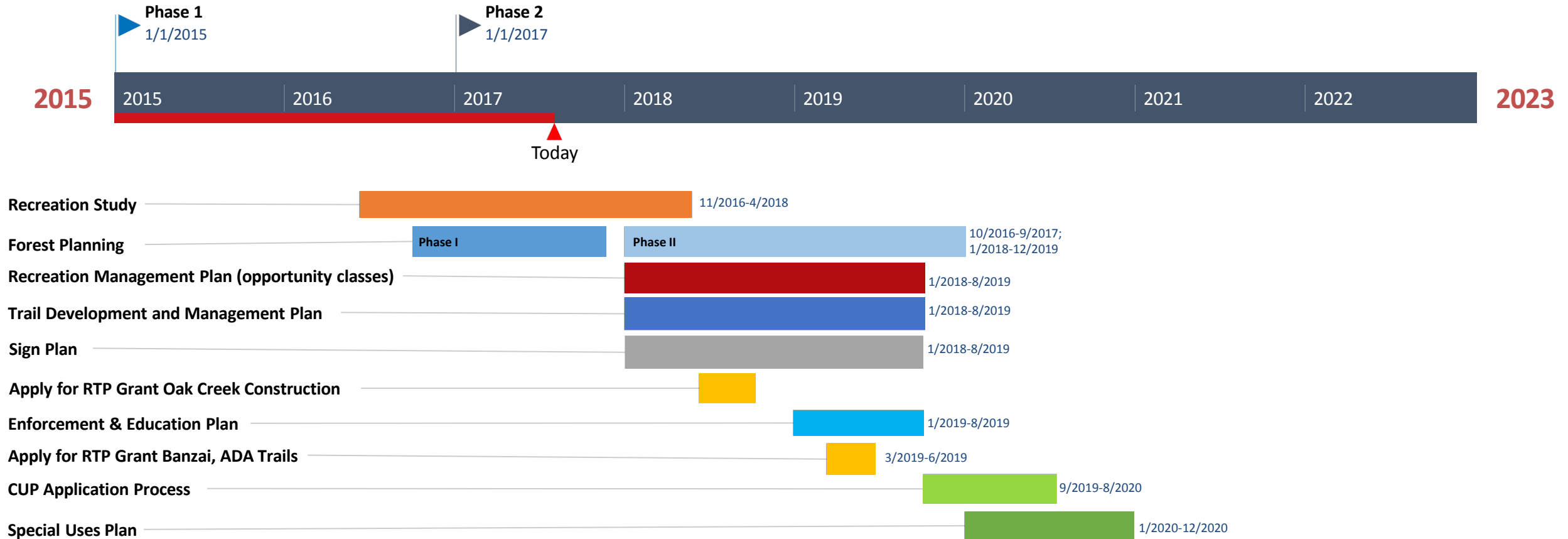
OSU Research Forest Parking & Trailhead Timeline



Ongoing Trailhead and Parking Program: Maintaining trailhead kiosks, update signs, address site-specific issues, parking restrictions

Planning lead: Ryan Brown, Recreation and Engagement Program Manager

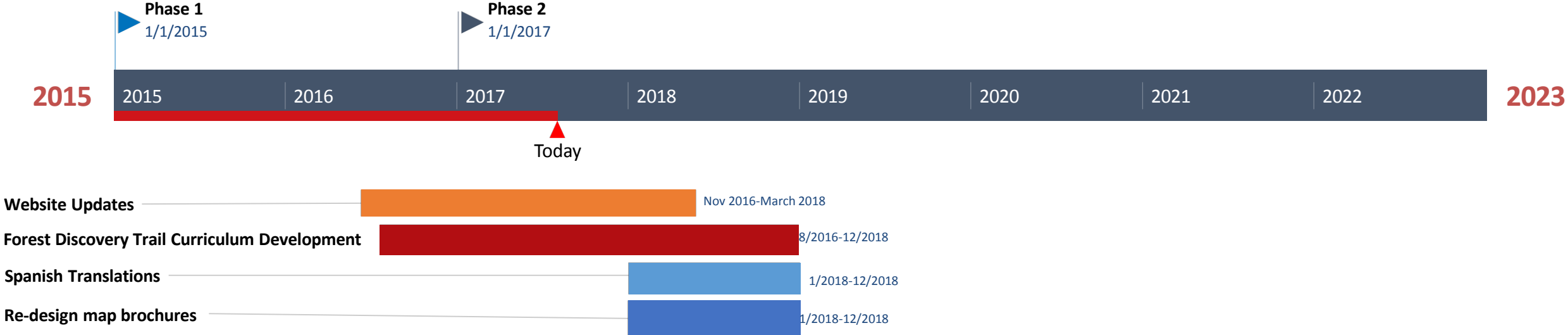
OSU Research Forest Planning Timeline



Ongoing Planning Program: Community involvement, Forest Recreation Advisory Committee (4x/yr), grant application and administration, contract administration, addressing known issues

Planning lead (except Forest Plan): Ryan Brown, Recreation and Engagement Program Manager

OSU Research Forest Public Information & Outreach Timeline



Ongoing Public Information and Outreach Program: Developing interpretive installations, Get Outdoors Day (1x/yr), Tails on Trails (2x/yr), STEM Academy (1x/yr), partnering on outreach efforts to underserved communities, responding to concerns from neighbors and visitors, forest management closure public information, administering events, contributing to The Right Trail website, monthly e-newsletter, administering forest announcements on Facebook, listserve, and website

Other Ongoing Recreation Program: Administering Dunn hunt program, administering events

Lead: Ryan Brown, Recreation and Engagement Program Manager