



McDonald & Dunn Forest Management Planning Process

Spring 2022 – Fall 2023

McDonald & Dunn Research Forests Management Planning Process

Phase I: Information gathering, Discussions, Assessment of former FMP (Spring-Summer 2022)

Initial Interviews

Inventory of COF
Academic Use

Community Listening
Session I

Stakeholder Advisory
Committee Meetings

Faculty Planning
Committee Meetings

Comment / Question
Submission



Phase II: Synthesizing, Modeling, Refining (Fall 2022-Spring 2023)

Stakeholder Advisory
Committee Meetings

Faculty Planning
Committee Meetings

Community Listening
Session II

Academic User
Listening Session

Community Input
Sessions I & II

Comment / Question
Submission



Phase III: Finalizing (Summer-Fall 2023)

Presentation of draft plan to the Dean &
Forestry Executive Committee for review

Forest management plan refinement

Forest management plan approval by Dean

McDonald & Dunn Forest Planning Timeline

Date	Meeting type
June 14	Joint SAC-FPC Meeting
Aug 30	SAC meeting #1
Aug 31	Community Listening Session #1
Sept 16	FPC meeting #1
Sept 20	SAC meeting #2
Oct 11	FPC meeting #2
Oct 25	FPC meeting #3
Nov 7	Community Listening Session #2
Nov 22	FPC meeting #4
Dec 5	SAC meeting #3
Dec 6	FPC meeting #5

*SAC = Stakeholder Advisory Committee (3-hour meetings)

*FPC = Faculty Planning Committee (2-hour meetings)



Oregon State
University

College of Forestry
Research Forests

[About](#)[Our Forests](#)[Recreation](#)[Research](#)

COMMUNITY LISTENING SESSION

The video from our community listening session on November 7 is now available.

[VIEW THE RECORDING](#)

MCDONALD-DUNN RESEARCH FOREST PLANNING PROCESS



MCDONALD-DUNN RESEARCH FOREST PLANNING PROCESS



The OSU College of Forestry is developing a new management plan for the McDonald and Dunn Research Forests, which is anticipated to be ready for implementation in 2024. This new plan will determine how the forests provide opportunities for teaching, research and outreach efforts of the College of Forestry. The new research forest plan will reflect the college's diverse values, and will position the McDonald-Dunn Research Forest to be a model example of multiple value forest management. Management decisions and activities on the McDonald-Dunn Research Forest will be driven by College of Forestry research agendas, education and demonstration opportunities, and considerations of an inclusive balance of forest uses and values.

The process of developing the new management plan will involve opportunities for public input, and two committees working in tandem from spring 2022 through fall 2023.

- Public input opportunities include three Community Listening Sessions, a [webform](#) through which written comments can be provided, and an [email](#) to which written questions can be sent.
- Two committees will assist in the development of the new plan: an external Stakeholder Advisory Committee (SAC) and College of Forestry Faculty Planning Committee (FPC). Comments submitted through the webform will be forwarded to these committees.

Upcoming Meetings & Events:

- Dec. 5, 2022, 9:00am-noon – Stakeholder Advisory Committee (open to the public to listen remotely through Zoom but not comment; video recording will be posted online after the meeting).
For those joining via Zoom, please register here for the meeting link: <https://pdx.zoom.us/meeting/register/tZUvf-Csrj0tG9F0tv4ZfAgUquFeBeS02SXz>
- Dec. 6, 2022, 1:00-3:00pm - Faculty Planning Committee Meeting (open to the public to listen remotely through Zoom but not comment; video recording will be posted online after the meeting).
Zoom link: <https://oregonstate.zoom.us/j/96973080286?pwd=MXhxOUwrekh6NFJYeFRkN1MzaGdrUT09>

Past Meetings & Events:

- June 14, 2022, SAC and FPC Joint Kickoff Meeting ([agenda](#), [video](#), [meeting summary](#))
- Aug 30, 2022, SAC Meeting ([agenda](#), [presentation](#), [meeting summary](#))
- Aug. 31, 2022, Community Listening Session ([agenda](#), [presentation](#), [meeting summary](#))
- Sept. 16, 2022, Faculty Planning Committee Meeting ([agenda](#), [presentation](#), [meeting summary](#))
- Sept. 20, 2022, Stakeholder Advisory Committee Meeting ([agenda](#), [presentation](#), [video recording](#), [meeting summary](#))
- Oct. 11, 2022, Faculty Planning Committee Meeting ([agenda](#), [presentation](#), [video recording](#), [meeting summary](#))
- Oct. 25, 2022, Faculty Planning Committee Meeting ([agenda](#), [presentation](#), [video recording](#), [meeting summary](#))
- Nov. 7, 2022, Community Listening Session ([agenda](#), [presentation](#), [video recording](#), [meeting summary](#))
- Nov. 22, 2022, Faculty Planning Committee Meeting ([agenda](#), [presentation](#), [video recording](#))

Past Meetings & Events:

- June 14, 2022, SAC and FPC Joint Kickoff Meeting ([agenda](#), [video](#), [meeting summary](#))
- Aug 30, 2022, SAC Meeting ([agenda](#), [presentation](#), [meeting summary](#))
- Aug. 31, 2022, Community Listening Session ([agenda](#), [presentation](#), [meeting summary](#))
- Sept. 16, 2022, Faculty Planning Committee Meeting ([agenda](#), [presentation](#), [meeting summary](#))
- Sept. 20, 2022, Stakeholder Advisory Committee Meeting ([agenda](#), [presentation](#), [video recording](#), [meeting summary](#))
- Oct. 11, 2022, Faculty Planning Committee Meeting ([agenda](#), [presentation](#), [video recording](#), [meeting summary](#))
- Oct. 25, 2022, Faculty Planning Committee Meeting ([agenda](#), [presentation](#), [video recording](#), [meeting summary](#))
- Nov. 7, 2022, Community Listening Session ([agenda](#), [presentation](#), [video recording](#), [meeting summary](#))
- Nov. 22, 2022, Faculty Planning Committee Meeting ([agenda](#), [presentation](#), [video recording](#))

SUBMIT YOUR COMMENTS

SUBMIT YOUR QUESTIONS

STAY CONNECTED

READ PUBLIC COMMENTS

HISTORIC DOCUMENTS - MCDONALD-DUNN RESEARCH FOREST
PLANNING 2004-PRESENT

** NOTE: Please keep refreshing your browser if you have trouble
viewing individual comments. **

TIMELINE OF THE MCDONALD-DUNN RESEARCH FOREST PLANNING PROCESS 2004-PRESENT



2005-2019

From 2004-2005, a faculty-led committee developed a research forest [management plan](#) with public input. This plan was followed until 2009. No plan was followed from 2009-2019. The 2005 plan was reinstated in fall of 2019 and remains in operation.

The 2005 forest plan centered around four themes intended to reflect different interests and objectives:

- **Theme One: Short Rotation Wood Production with High Return on Investment.** Establishes and manages Douglas-fir plantations to become financially competitive with intensively managed plantations of pine and other species in the southeastern United States and elsewhere, maximizing yields of wood products valuable for domestic mills.
- **Theme Two: High-quality, Growth maximizing Timber Production.** Emphasizes long rotations of even-aged Douglas-fir dominated plantations, established, managed, and harvested on rotation cycles that optimize yield of high-quality wood, generally one to several decades longer than for Theme One.
- **Theme Three: Visually Sensitive, Even-aged Forest.** Seeks to create even-aged forests of primarily Douglas-fir using a two-storied, shelter wood system to maintain continuous tree cover with options for long-term retention of some shelter trees for non-wood forest values.
- **Theme Four: Structurally Diverse Complex Forest.** Multi-aged, mixed-species forests of primarily Douglas-fir are established and managed using group-selection harvests, while maintaining structural diversity and associated habitats within stands.

2019

The College of Forestry started the process of developing a new McDonald-Dunn Research Forest Management Plan following [a communication](#) from former Interim Dean Anthony Davis to the college community on Oct. 21, 2019.

While the new plan is under development, all operations on the McDonald-Dunn Research Forest are being conducted in accordance with the [2005 Forest Plan](#).

Aug. 28 and Oct. 2, 2019 Community Information Sessions – [Question and Answer Summary](#)

2020

College of Forestry Dean Tom DeLuca provided [a charge letter](#) in October 2020 to a faculty advisory committee to create recommendations on next steps in the research forest planning process. He asked faculty to create a draft Vision, Mission and Goals statement for the forests, and recommend a process for creating a new forest management plan for the McDonald and Dunn Research Forests.

The [Vision, Mission, and Goals statement](#) serves as guideposts for all College of Forest research forests.

2021

Oregon Consensus, a statewide program based at Portland State that assists in building consensus regarding complex issues, is hired to oversee community stakeholder engagement associated with development of the new research forest management plan.

2022

Spring

- Oregon Consensus conducts stakeholder interviews to hear and take account of observations, concerns and aspirations regarding management of the

Summary of FPC Meetings #1, 2, 3, & 4

- Overview of the planning process
- Operating principles
- Questions from the FPC, SAC, community
- Discussion of the 2005 McDonald-Dunn Forest
 - Value and shortcomings of the plan's structure:
 - 'Themes', 'Special Areas', 'Special Issues', 'Zones'
 - Deficiencies in the plan:
 - lack of flexibility (plan suspension), lack of accountability (monitoring), lack of transparency
- Discussion of opportunities for future research, improvements that could increase academic use, improvements to better track use, improvements to cultural and community connections
- Compilation and refinement of a summary of 'Overarching Principles' (n=22)
- Components of the new plan

McDonald & Dunn Research Forests Management Planning Process

Phase I: Information gathering, Discussions, Assessment of former FMP (Spring-Summer 2022)

Initial Interviews

Inventory of COF
Academic Use

Community Listening
Session I

Stakeholder Advisory
Committee Meetings

Faculty Planning
Committee Meetings

Comment / Question
Submission



Phase II: Synthesizing, Modeling, Refining (Fall 2022-Spring 2023)

Stakeholder Advisory
Committee Meetings

Faculty Planning
Committee Meetings

Community Listening
Session II

Academic User
Listening Session

Community Input
Sessions I & II

Comment / Question
Submission



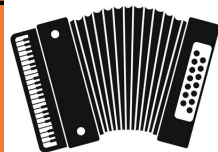
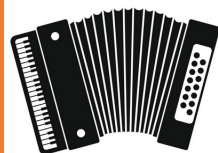
Phase III: Finalizing (Summer-Fall 2023)

Presentation of draft plan to the Dean &
Forestry Executive Committee for review

Forest management plan refinement

Forest management plan approval by Dean

McDonald & Dunn Research Forests Management Planning Process

PHASE I		INFORMATION GATHERING, DISCUSSIONS, ASSESSMENT OF 2005 PLAN	
[PHASE Ia]	Information Gathering:		
[PHASE Ib]	Discussions, Assessment of 2005 Plan:		
PHASE II		SYNTHESIZING, MODELING, REFINING, WRITING	
[PHASE IIa]	Synthesizing:		
[PHASE IIb]	Modeling, Refining:		
[PHASE IIc]	Writing:		
PHASE III		WRITING, FINALIZING	

[Compact overview of the plan development process]

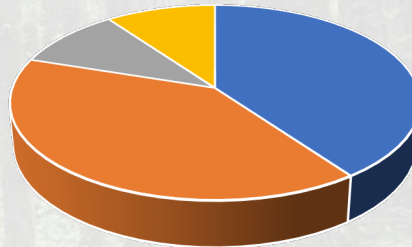
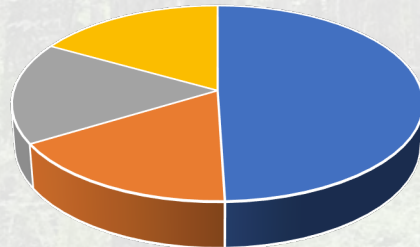
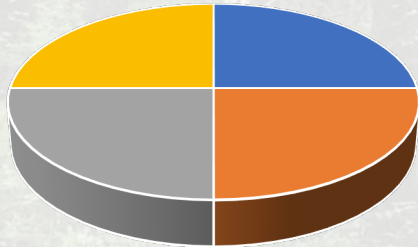
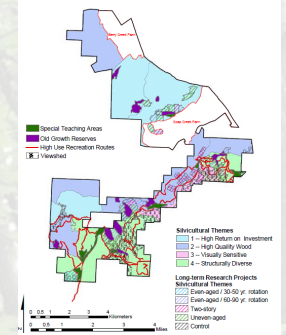
McDonald & Dunn Research Forests Management Planning Process

PHASE I	INFORMATION GATHERING, DISCUSSIONS, ASSESSMENT OF 2005 PLAN
[PHASE Ia]	Information Gathering: <ul style="list-style-type: none">Initial Interviews (stakeholders)Community Listening Session I & II (stakeholders)Comment & Question submission (stakeholders)Inventory of Academic Use (COF)Joint SAC-FPC meeting
[PHASE Ib]	Discussions, Assessment of 2005 Plan: <ul style="list-style-type: none">SAC meetings I & IIFPC meetings I & II & III

Detailed view of Phase I of the plan development process

What is a 'scenario'?

- The 2005 Plan had 4 'themes', intended to represent landowner objectives
 - Short rotation; high return on investment
 - Long rotation; high quality wood
 - Two-story; visually sensitive
 - Multi-aged; structurally diverse
- The FPC suggested calling these 'management regimes'
- Example scenarios reflect varying proportions of management regimes:



- Why do we need scenarios?
 - Each 'management regime' provides slightly different ecosystem services
 - An examination of scenarios will enable evaluation of tradeoffs

McDonald & Dunn Research Forests Management Planning Process

PHASE II SYNTHESIZING, MODELING, REFINING, WRITING	
Synthesizing:	
<u>SAC meetings III & IV</u>	
<ul style="list-style-type: none"> -write <i>synthesis document and share with FPC</i> -consider 'themes' ('management regimes') for new plan -consider scenarios (proportions of each 'management regime') -consider necessary components of new plan 	
<u>FPC meetings IV, V, & VI</u>	
<ul style="list-style-type: none"> -write <i>overarching principles document and share with SAC</i> -consider 'themes' ('management regimes') for new plan -consider scenarios (proportions of each 'management regime') -consider necessary components of new plan 	
Modeling, Refining:	
Round 1	Forest growth and development modeling (consultant)
	Ecosystem service modeling (consultant)
	1st round: evaluation of alternatives (SAC, FPC, Community Input Session I)
Round 2	Forest growth and development modeling (consultant)
	Ecosystem service modeling (consultant)
	2nd round: evaluation of alternatives (SAC, FPC, Community Input Session II)
Writing:	
Drafting of chapters (various work groups and individuals)	

Detailed view of Phase II of the plan development process

Role of the FPC

- PHASE I

- Provided a variety of perspectives during the 'information gathering'
- Brought to light questions and concerns
- Assessed the 2005 Plan: strengths and weaknesses

- PHASE II

- Compile synthesis document to share with FPC
- Consider 'themes' ('management regimes') for the new plan
- Consider scenarios (proportions of management scenarios) for the new plan
- Consider the necessary components of the new plan
- Evaluate the scenarios
- Take part in the writing, if you choose

- PHASE III

- Refine

‘Products’ to be developed during Phase II

- Synthesis document to be shared with FPC
- Input on ‘themes’ (AKA ‘management regimes’)
- Input on scenarios (proportions of each ‘management regime’)
- Input on forest plan components

Next, we'll work on the synthesis document

